

VORTAC LRD <b>117.4</b> Chan 121	APP CRS <b>320°</b>	Rwy Ldg TDZE Apt Elev	<b>5927</b> <b>494</b> <b>508</b>
--	------------------------	-----------------------------	---

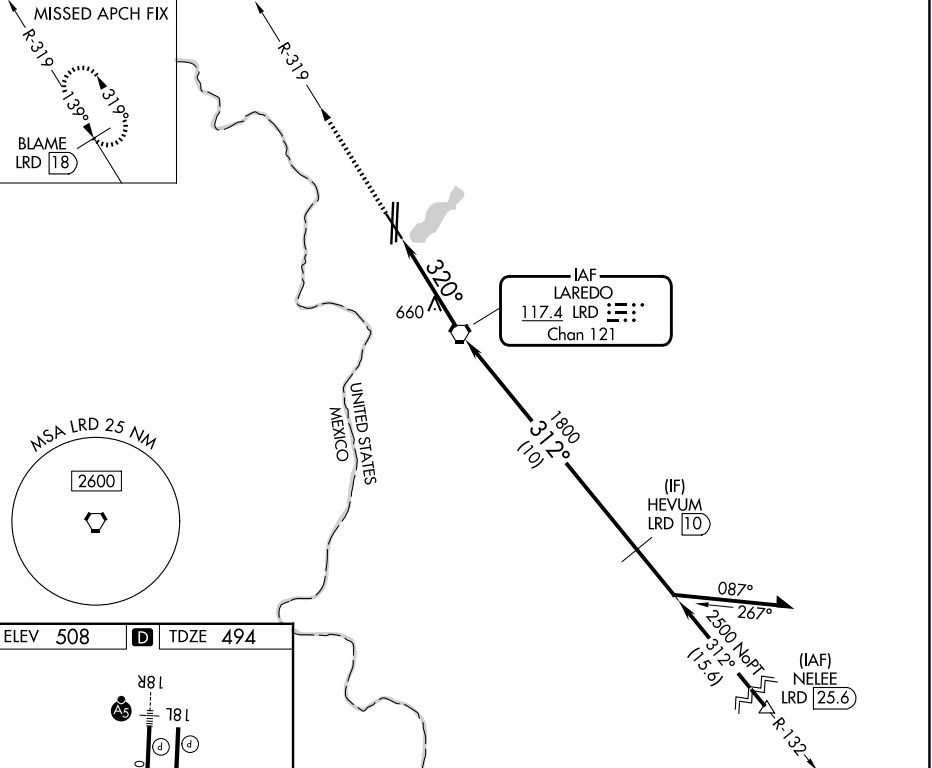
# VOR or TACAN RWY 32

LAREDO INTL (L.R.D)

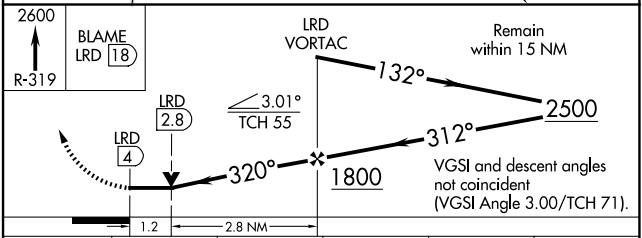
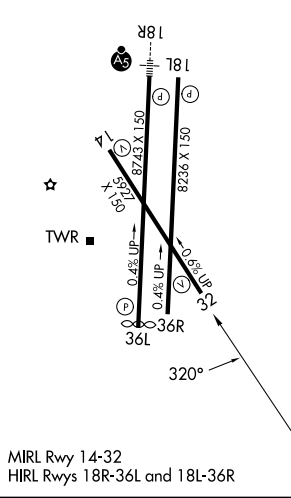
**⚠** Circling NA west of Rwy 14 and 36L. Rwy 32 helicopter visibility reduction below ¼ SM NA. DME required.

**MISSED APPROACH:** Climb to 2600 on LRD VORTAC R-319 to BLAME/LRD 18 DME and hold.

ATIS <b>125.775</b>	HOUSTON CENTER <b>127.8 307.2</b>	<b>LAREDO TOWER *</b> <b>120.1 (CTAF) 0 257.9</b>	GND CON <b>121.8</b>	UNICOM <b>122.95</b>
------------------------	--------------------------------------	--	-------------------------	-------------------------



ELEV 508	<b>D</b>	TDZE 494
----------	----------	----------



CATEGORY	A	B	C	D	E
S-32	920-1	426 (500-1)	920-1¼ 426 (500-1¼)		
CIRCLING	940-1 432 (500-1)	980-1 472 (500-1)	1100-1½ 592 (600-1½)	1200-2¼ 692 (700-2¼)	1200-2½ 692 (700-2½)

SC-3, 11 JUN 2026 to 09 JUL 2026

SC-3, 11 JUN 2026 to 09 JUL 2026