

# HI-ILS Z or LOC Z RWY 36

LOC I-LNK <b>109.9</b>	APCH CRS <b>357°</b>	Rwy ldg <b>12,901</b> TDZE <b>1175</b> Arprt Elev <b>1219</b>	[USAF]	LINCOLN (KLNK)
---------------------------	-------------------------	---	--------	----------------

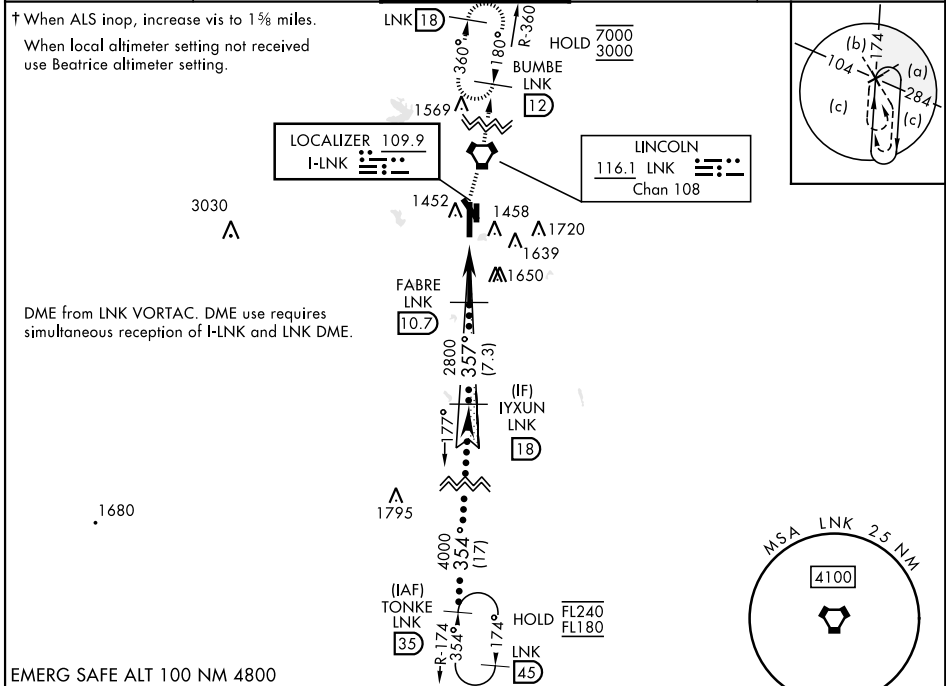
**DME required**

\* When ALS inop, increase RVR to 40, vis to ¼ mile.  
 \*\* When ALS inop, increase vis to 1½ miles.  
 \*\*\* When ALS inop, increase RVR to 45, vis to ⅓ mile.

MALSR (A5)

MISSED APPROACH: Climb to 1700 then climbing right turn to 3000 direct LNK VORTAC and on LNK R-360 to BUMBE 12 DME and hold.

ATIS <b>118.05 290.9</b>	OMAHA APP CON <b>124.0 270.3</b>	TOWER ★ <b>118.5 253.5</b>	GND CON <b>121.9 275.8</b>	CLNC DEL <b>120.7 225.4</b>
-----------------------------	-------------------------------------	-------------------------------	-------------------------------	--------------------------------



1700	3000	LNK	IYXUN Intcp LOC LNK (18)	TONKE LNK (35)
			FABRE LNK (10.7)	FL180
		JEMVI LNK (7.8)		
		LNK (5.8)		
		LNK (7.1)		
		1860	357°	4000
		2800	354°	
		2 NM	2.9 NM	
CATEGORY	C	D	E	
S-ILS 36 *	1375/24	200	(200-½)	
S-LOC 36 **	1620/45	445	(500-⅔)	
CIRCLING	1820-1½ 601 (700-1½)	1960-2¼ 741 (800-2¼)	2040-3 821 (900-3)	
BEATRICE ALTIMETER SETTING				
S-ILS 36 ***	1466/24	291	(300-½)	
S-LOC 36 †	1720/60	545	(600-1½)	
CIRCLING	1920-2 601 (700-2)	2060-2¾ 741 (800-2¾)	2140-3¼ 921 (1000-3¼)	

ELEV	1219	TDZE	1175
------	------	------	------

MIRL Rwy 14-32 and 17-35  
HIRL Rwy 18-36  
REIL Rwy 14, 17

NC-2, 11 JUN 2026 to 09 JUL 2026

NC-2, 11 JUN 2026 to 09 JUL 2026

# HI-ILS Z or LOC Z RWY 36