


LOC I-OCZ 111.1	APP CRS 177°	Rwy Ldg 12901
		TDZE 1195
		Apt Elev 1219

ILS Y or LOC Y RWY 18

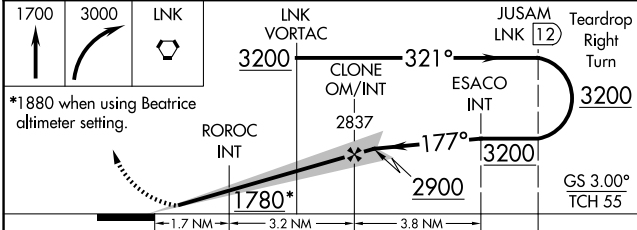
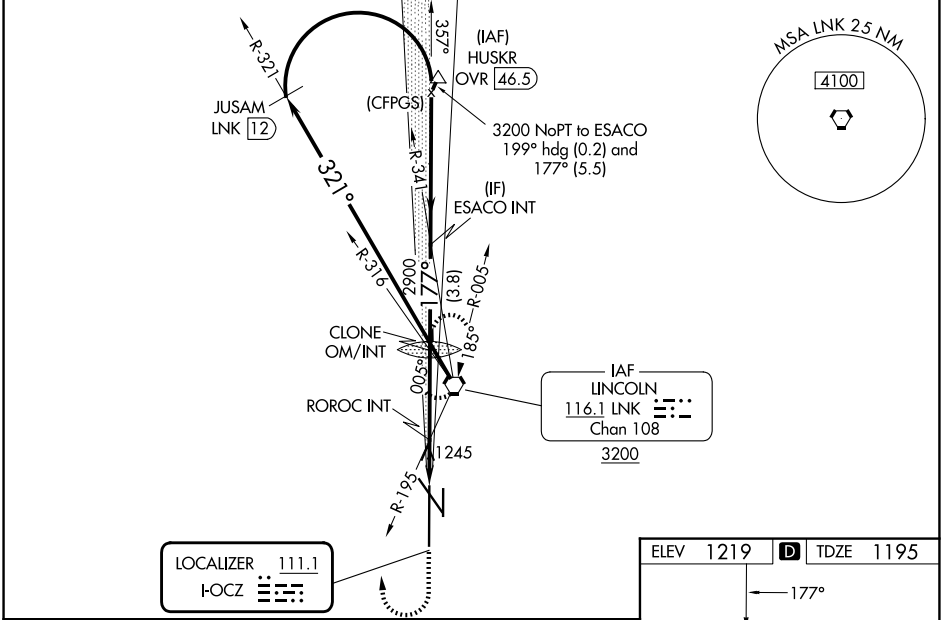
LINCOLN (LNK)

⚠ When local altimeter setting not received use Beatrice altimeter setting and increase DA to 1486; and all MDA 100 feet, increase visibility S-LOC 18 Cat C, D, E and Circling Cats C and D 1/4 SM; increase ROROC fix minimums S-LOC 18 Cat C/D/E visibility 3/8 SM and Circling Cats C and D 1/4 SM. For inop ALS, increase S-ILS 18 Cat E visibility to RVR 4000, S-LOC 18 Cat E visibility to 1 3/4 SM, and ROROC fix minimums S-LOC 18 Cat E visibility to 1 1/2 SM. For inop ALS when using Beatrice altimeter setting, increase S-ILS 18 all Cats visibility to RVR 4500, S-LOC 18 Cat E visibility to 2 SM, and ROROC fix minimums S-LOC 18 Cat C/D/E visibility to 1 3/4 SM.
#RVR 1800 authorized with use of FD or AP or HUD to DA.

MALS


MISSED APPROACH:
Climb to 1700 then climbing right turn to 3000 direct LNK VORTAC and hold.

ATIS 118.05 290.9	OMAHA APP CON 124.0 270.3	LINCOLN TOWER* 118.5(CTAF) 253.5	GND CON 121.9 275.8	UNICOM 122.95
-----------------------------	-------------------------------------	--	-------------------------------	-------------------------



ELEV 1219	TDZE 1195
HIRL Rwy 18-36	
REIL Rwys 14 and 17	
MIRL Rwys 14-32 and 17-35	
FAF to MAP 4.9 NM	
S-ILS 18#	1395/24 200 (200-1/2)
S-LOC 18	1780/24 585 (600-1/2) 1780-1 585 (600-1 1/4)
CIRCLING	1780-1 561 (600-1) 1820-1 3/4 1960-2 1/2 2040-3 601 (700-1 3/4) 741 (800-2 1/2) 821 (900-3)
ROROC FIX MINIMUMS (DUAL VOR RECEIVERS REQUIRED)	
S-LOC 18	1720/24 525 (600-1/2) 1720/55 525 (600-1)
CIRCLING	1720-1 501 (600-1) 1760-1 541 (600-1) 1820-1 3/4 601 (700-1 3/4) 1960-2 1/2 741 (800-2 1/2) 2040-3 821 (900-3)
Knots	60 90 120 150 180
Min:Sec	4:54 3:16 2:27 1:58 1:38

NC-2, 11 JUN 2026 to 09 JUL 2026

NC-2, 11 JUN 2026 to 09 JUL 2026