

WAAS CH 69328 W32A	APP CRS 322°	Rwy Ldg TDZE Apt Elev	7816 1192 1219
--	------------------------	-----------------------------	---

RNAV (GPS) RWY 32

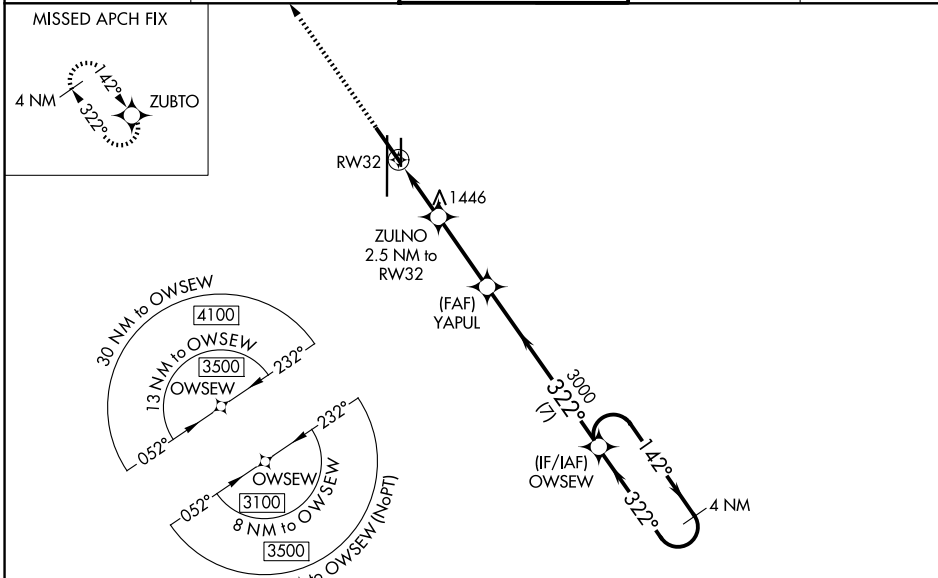
LINCOLN (LNK)

RNP APCH - GPS.

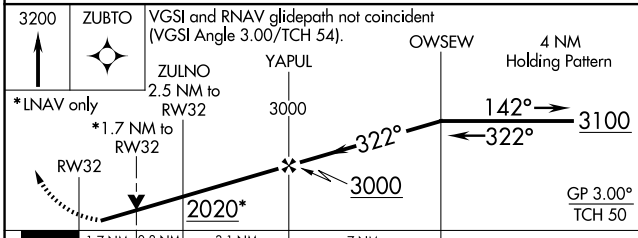
⚠ For uncompensated Baro-VNAV systems, LNAV/VNAV NA below -25°C (-13°F) or above 54°C (130°F). When local altimeter setting not received, use Beatrice altimeter setting and increase all DA 91 feet and all MDA 100 feet, increase LPV all Cats visibility 1/8 mile, increase LNAV/VNAV all Cats visibility 3/8 mile, increase LNAV Cats C/D and Circling Cats C/D visibility 1/4 mile. Helicopter visibility reduction below 3/4 SM NA. Baro-VNAV and VDP NA when using Beatrice altimeter setting.

MISSED APPROACH:
Climb to 3200 direct ZUBTO and hold.

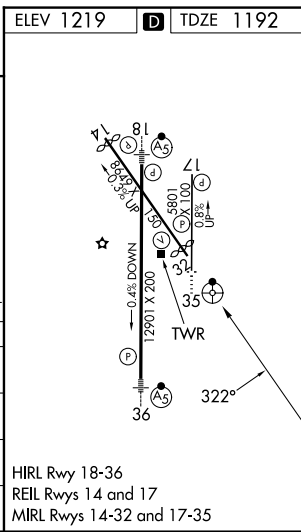
ATIS 118.05 290.9	OMAHA APP CON 124.0 270.3	LINCOLN TOWER* 118.5(CTAF) 253.5	GND CON 121.9 275.8	UNICOM 122.95
-----------------------------	-------------------------------------	--	-------------------------------	-------------------------



ELEV 1219	D TDZE 1192
-----------	--------------------



CATEGORY	A	B	C	D
LPV DA	1442-1 250 (300-1)			
LNAV/VNAV DA	1576-1 1/4 384 (400-1 1/4)			
LNAV MDA	1760-1 568 (600-1)		1760-1 3/4 568 (600-1 3/4)	
CIRCLING	1760-1 541 (600-1)		1820-1 3/4 601 (700-1 3/4)	1960-2 1/2 741 (800-2 1/2)



HIRL Rwy 18-36
REIL Rws 14 and 17
MIRL Rws 14-32 and 17-35

NC-2, 11 JUN 2026 to 09 JUL 2026

NC-2, 11 JUN 2026 to 09 JUL 2026