

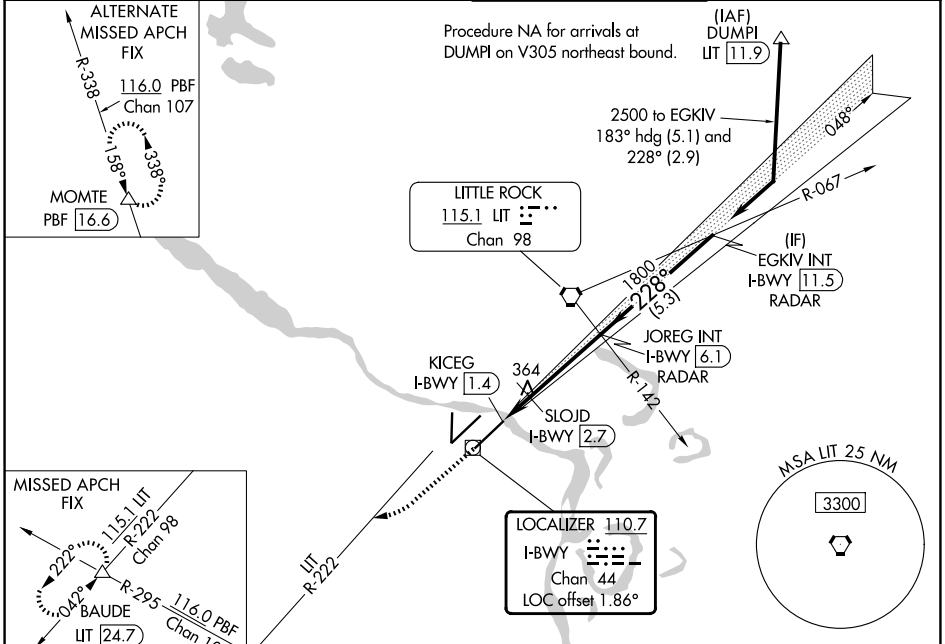
LOC/DME I-BWY <b>110.7</b> Chan <b>44</b>	APP CRS <b>228°</b>	Rwy Ldg TDZE <b>7200</b> <b>260</b>	Apt Elev <b>266</b>
---	------------------------	---	------------------------

# ILS or LOC RWY 22L

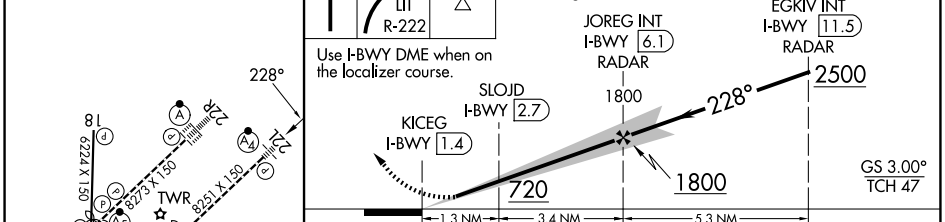
BILL AND HILLARY CLINTON NTL/ADAMS FLD (LIT)

DME or RADAR required.	MALSF	MISSED APPROACH: Climb to 800 then climbing right turn to 3000 on LIT VORTAC R-222 to BAUDE INT/LIT 24.7 DME and hold.
<p>Simultaneous approach authorized. Inop table does not apply to S-ILS 22 all Cats. For inop ALS, increase S-LOC 22L Cats C/D visibility to 1/2 SM.</p>		

D-ATIS <b>125.65</b>	LITTLE ROCK APP CON <b>135.4 353.6</b>	ADAMS TOWER <b>118.7 257.8</b>	GND CON <b>121.9 339.8</b>
-------------------------	---	-----------------------------------	-------------------------------



ELEV 266	D	TDZE 260	800	3000	BAUDE	VGSI and ILS glidepath not coincident (VGSI Angle 3.00°/TCH 50).
----------	---	----------	-----	------	-------	--



CATEGORY	A	B	C	D
S-ILS 22L	510/40		250 (300-¾)	
S-LOC 22L	720/40	460 (500-¾)	720/55	460 (500-1)
CIRCLING	820-1	1000-1	1180-2¾	1180-3
	554 (600-1)	734 (800-1)	914 (1000-2¾)	914 (1000-3)
SLOJD FIX MINIMUMS (DME REQUIRED)				
S-LOC 22L	620/40		360 (400-¾)	
CIRCLING	820-1	1000-1	1180-2¾	1180-3
	554 (600-1)	734 (800-1)	914 (1000-2¾)	914 (1000-3)

MIRL Rwy 18-36  
HIRL Rwys 4R-22L and 4L-22R  
TDZL/RCLS Rwy 22R

FAF to MAP 4.7 NM

Knots	60	90	120	150	180
Min:Sec	4:42	3:08	2:21	1:53	1:34

SC-1, 11 JUN 2026 to 09 JUL 2026

SC-1, 11 JUN 2026 to 09 JUL 2026