

LOC/DME I-AAAY <b>110.3</b> Chan <b>40</b>	APP CRS <b>227°</b>	Rwy Ldg <b>8273</b> TDZE <b>262</b> Apt Elev <b>266</b>
--	------------------------	---

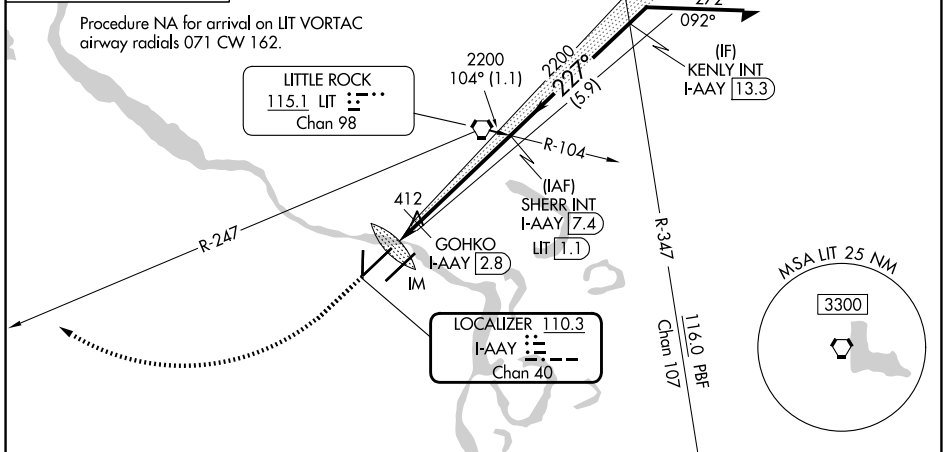
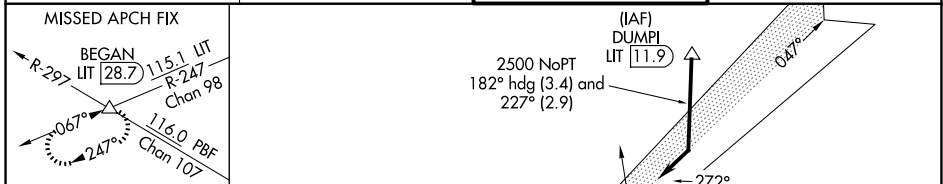
# ILS or LOC RWY 22R

BILL AND HILLARY CLINTON NTL/ADAMS FLD (LIT)

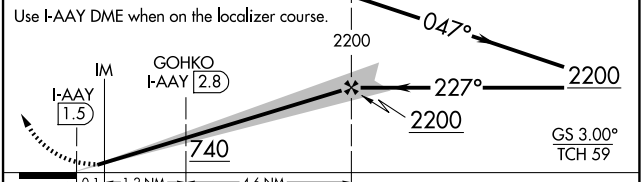
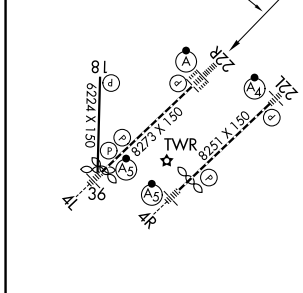
**Simultaneous approach authorized. For inop ALS, increase S-LOC 22R Cat C/D visibility to 1 $\frac{1}{2}$  SM; increase GOHKO Fix Minimums (DME required) S-LOC 22R Cat C/D visibility to RVR 6000.**

**ALSIF-2**  
MISSED APPROACH: Climb to 1000 then climbing right turn to 3000 on LIT VORTAC R-247 to BEGAN INT/LIT 28.7 DME and hold.

D-ATIS <b>125.65</b>	LITTLE ROCK APP CON <b>135.4 353.6</b>	ADAMS TOWER <b>118.7 257.8</b>	GND CON <b>121.9 339.8</b>
-------------------------	---	-----------------------------------	-------------------------------



ELEV 266	<b>D</b> TDZE 262	1000	3000	BEGAN	SHERR INT I-AAAY 7.4 LIT 1.1	Remain within 10 NM
----------	-------------------	------	------	-------	------------------------------	---------------------



MIRL Rwy 18-36 HIRL Rws 4R-22L and 4L-22R TDZL/RCLS Rwy 22R		FAF to MAP 5.9 NM						
Knots	60	90	120	150	180			
Min:Sec	5:54	3:56	2:57	2:22	1:58			
CATEGORY	A		B		C		D	
S-ILS 22R	462/18				200 (200- $\frac{1}{2}$ )			
S-LOC 22R	740/24		478 (500- $\frac{1}{2}$ )		740/50		478 (500-1)	
CIRCLING	820-1		1000-1		1180-2 $\frac{3}{4}$		1180-3	
	554 (600-1)		734 (800-1)		914 (1000-2 $\frac{3}{4}$ )		914 (1000-3)	
GOHKO FIX MINIMUMS (DME REQUIRED)								
S-LOC 22R	680/24		418 (500- $\frac{1}{2}$ )		680/40		418 (500- $\frac{3}{4}$ )	
CIRCLING	820-1		1000-1		1180-2 $\frac{3}{4}$		1180-3	
	554 (600-1)		734 (800-1)		914 (1000-2 $\frac{3}{4}$ )		914 (1000-3)	