

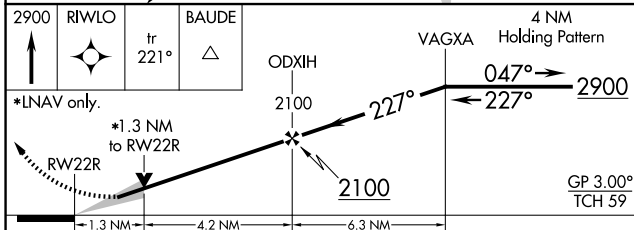
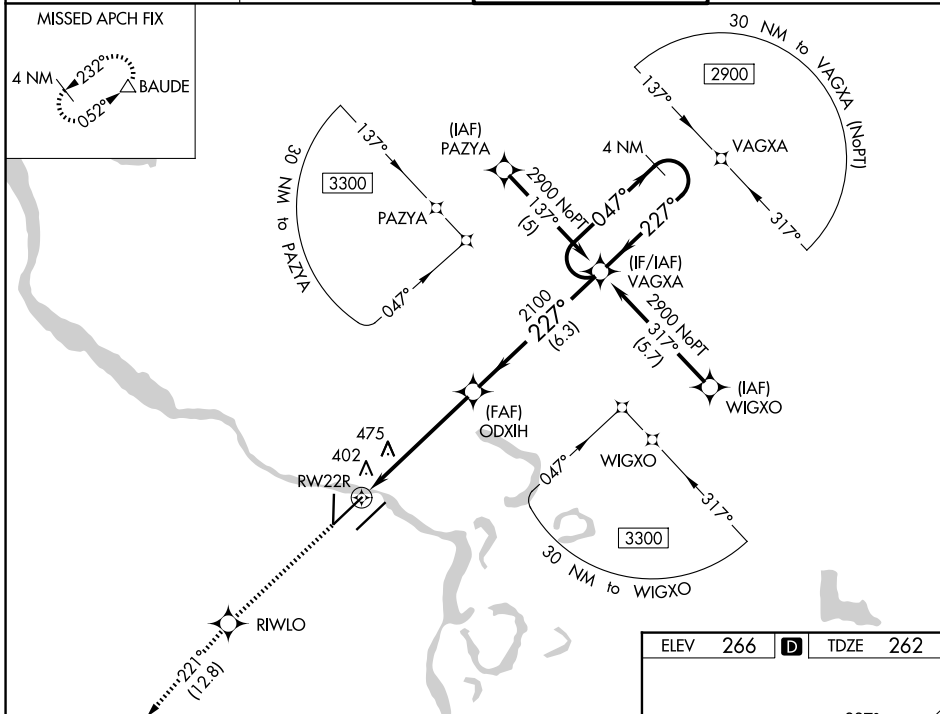
WAAS CH <b>93811</b> <b>W22B</b>	APP CRS <b>227°</b>	Rwy Ldg TDZE Apt Elev	<b>8273</b> <b>262</b> <b>266</b>
--	------------------------	-----------------------------	---

# RNAV (GPS) RWY 22R

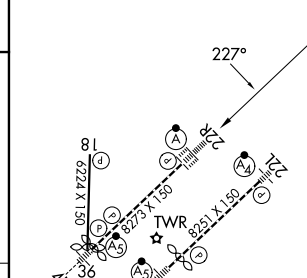
BILL AND HILLARY CLINTON NTL/ADAMS FLD (LIT)

RNP APCH.	ALSF-2	MISSED APPROACH: Climb to 2900 direct RIWLO and on track 221° to BAUDE and hold.
For uncompensated Baro-VNAV systems, LNAV/VNAV NA below -1.5°C or above 48°C.		

D-ATIS <b>125.65</b>	LITTLE ROCK APP CON <b>135.4 353.6</b>	ADAMS TOWER <b>118.7 257.8</b>	GND CON <b>121.9 339.8</b>
-------------------------	---	-----------------------------------	-------------------------------



ELEV 266	<b>D</b>	TDZE 262
----------	----------	----------



CATEGORY	A	B	C	D
LPV DA		462/18	200 (200-½)	
LNAV/VNAV DA		727/50	465 (500-1)	
LNAV MDA	740/24	478 (500-½)	740/50	478 (500-1)
CIRCLING	820-1 554 (600-1)	1000-1 734 (800-1)	1180-2¾ 914 (1000-2¾)	1180-3 914 (1000-3)

MIRL Rwy 18-36  
HIRL Rwy 4R-22L and 4L-22R  
TDZL/RCLS Rwy 22R

SC-1, 11 JUN 2026 to 09 JUL 2026

SC-1, 11 JUN 2026 to 09 JUL 2026