

WAAS CH 70611 W04B	APP CRS 046°	Rwy Ldg 7200 TDZE 260 Apt Elev 266
--	------------------------	---

RNAV (GPS) RWY 4R

BILL AND HILLARY CLINTON NTL/ADAMS FLD (LIT)

RNP APCH-GPS.

⚠ Rwy 4R helicopter visibility reduction below RVR 4000 NA. For uncompensated Baro-VNAV systems, LNAV/VNAV NA below -15°C or above 54°C. Simultaneous approach authorized. LNAV procedure NA during simultaneous operations. Use of FD or AP required during simultaneous operations. For inop ALS, increase LPV all Cats visibility to RVR 4500, LNAV/VNAV all Cats visibility to 1/2 SM and LNAV Cat A/B visibility to RVR 5500 and Cat C/D to 1/2 SM.



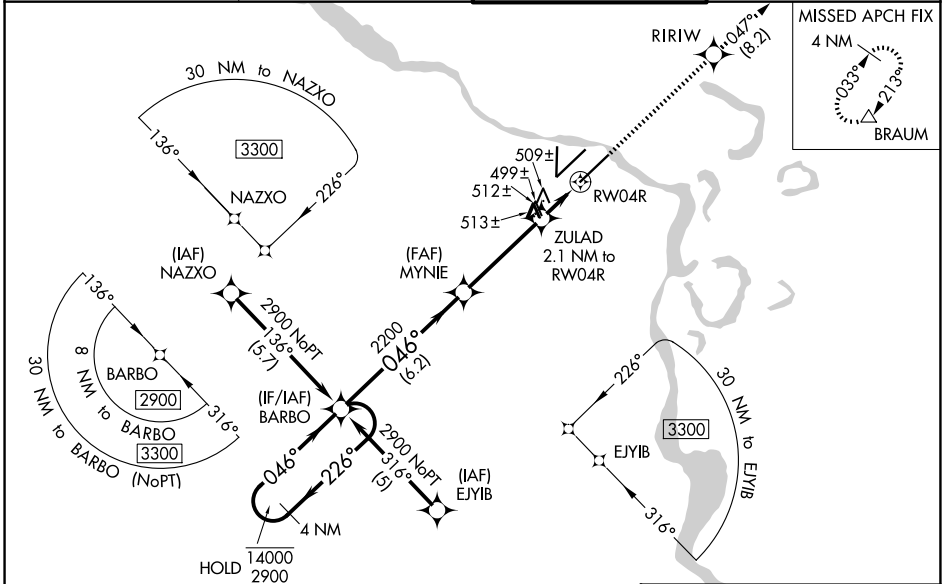
MISSED APPROACH:
Climb to 2900 direct RIRIW and on track 047° to BRAUM and hold.

D-ATIS
125.65

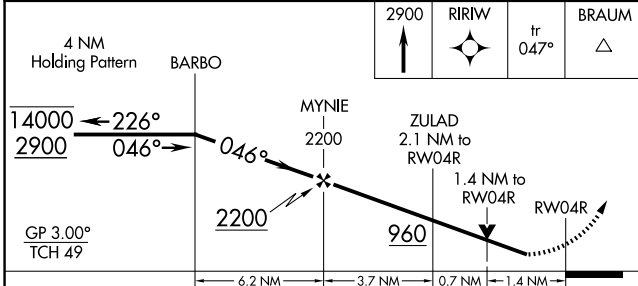
LITTLE ROCK APP CON
135.4 353.6

ADAMS TOWER
118.7 257.8

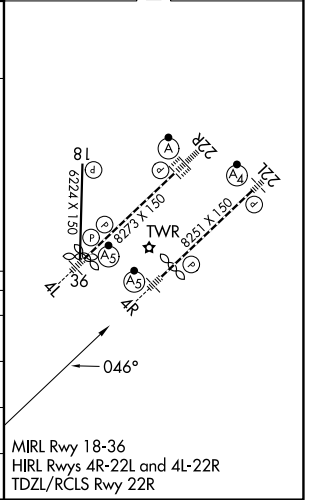
GND CON
121.9 339.8



ELEV 266 **D** TDZE 260



CATEGORY	A	B	C	D
LPV DA		574/40	314 (400-3/4)	
LNAV/VNAV DA		756/50	496 (500-1)	
LNAV MDA	760/40	500 (500-3/4)	760/50	500 (500-1)
CIRCLING	820-1 554 (600-1)	1000-1 734 (800-1)	1180-2 3/4 914 (1000-2 3/4)	1180-3 914 (1000-3)



SC-1, 11 JUN 2026 to 09 JUL 2026

SC-1, 11 JUN 2026 to 09 JUL 2026