

WAAS CH 69506 W27A	APP CRS 270°	Rwy Ldg TDZE 717 Apt Elev 717	5000
--	------------------------	---	-------------

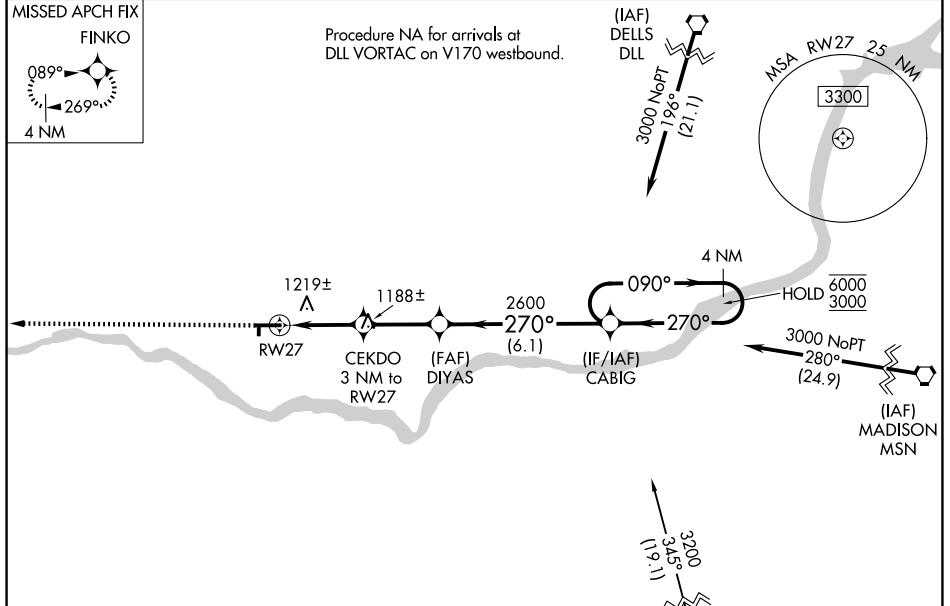
RNAV (GPS) RWY 27

TRI-COUNTY RGNL (LNR)

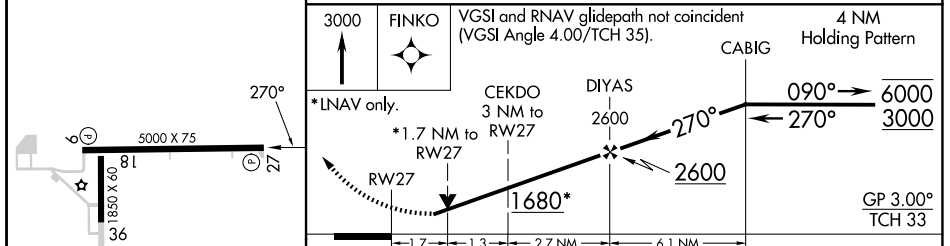
RNP APCH
 Circling Rwy 18, 36 NA at night. Baro-VNAV and VDP NA when using Dane County Rgnl-Truax Fld altimeter setting. Rwy 27 helicopter visibility reduction below 3/4 SM NA. For uncompensated Baro-VNAV systems, LNAV/VNAV NA below -22°C or above 54°C. When local altimeter setting not received, use Dane County Rgnl-Truax Fld altimeter setting and increase LPV DA to 1485, LNAV/VNAV DA to 1694, and all MDA 120 feet. Increase LPV visibility all Cats and Circling visibility Cat C 1/2 SM, LNAV visibility Cat A and Circling visibility Cat A 1/4 SM.

MISSED APPROACH:
 Climb to 3000 direct FINKO and hold.

ASOS 119.425	MADISON APP CON * 135.45 343.7	UNICOM 123.0 (CTAF)
------------------------	--	-------------------------------



ELEV 717	TDZE 717
----------	----------



	A	B	C	D
CATEGORY	A	B	C	D
LPV DA	1375-2	658 (700-2)		NA
LNAV/VNAV DA	1584-4	867 (900-4)		NA
LNAV MDA	1480-1 763 (800-1)	1480-1¼ 763 (800-1¼)	1480-2½ 763 (800-2½)	NA
CIRCLING	1520-1 803 (900-1)	1520-1¼ 803 (900-1¼)	1560-2½ 843 (900-2½)	NA

REIL Rwy 9 and 27
 MIRL Rwy 9-27 and 18-36

EC-3, 11 JUN 2026 to 09 JUL 2026

EC-3, 11 JUN 2026 to 09 JUL 2026