

WAAS CH 78206 W09A	APP CRS 090°	Rwy Ldg TDZE Apt Elev	5000 717 717
--	------------------------	-----------------------------	---

RNAV (GPS) RWY 9

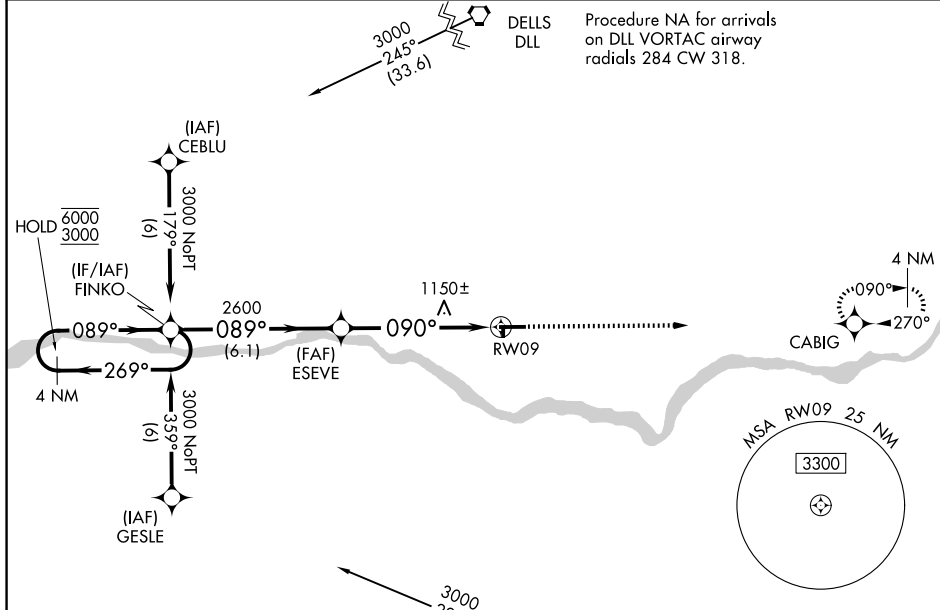
TRI-COUNTY RGNL (LNR)

RNP APCH

⚠ Circling Rwy 18, 36 NA at night. Baro-VNAV and VDP NA when using Dane County Rgnl-Truax Fld altimeter setting. Rwy 9 helicopter visibility reduction below 3/4 SM NA. For uncompensated Baro-VNAV systems, LNAV/VNAV NA below -22°C or above 54°C. When local altimeter setting not received, use Dane County Rgnl-Truax Fld altimeter setting and increase LPV DA to 1104, LNAV/VNAV DA to 1769, and all MDA 120 feet. Increase LPV visibility all Cats 1/8 SM, LNAV visibility Cat C and Circling visibility Cat A 1/4 SM, Circling visibility Cat C 1/2 SM.

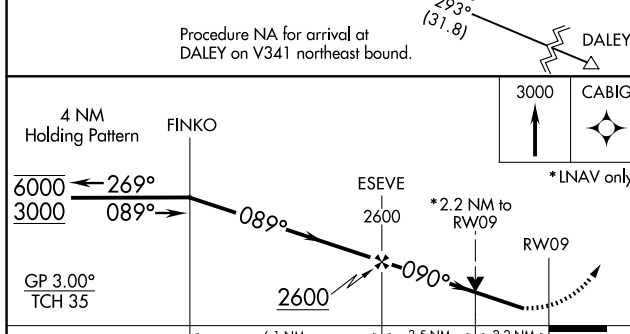
MISSED APPROACH:
Climb to 3000 direct CABIG and hold.

ASOS 119.425	MADISON APP CON * 135.45 343.7	UNICOM 123.0 (CTAF) 📻
------------------------	--	--



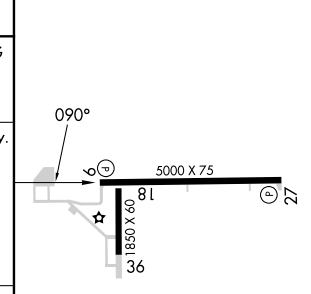
EC-3, 11 JUN 2026 to 09 JUL 2026

EC-3, 11 JUN 2026 to 09 JUL 2026



ELEV 717	TDZE 717
----------	----------

CATEGORY	A	B	C	D
LPV DA	994-1	277 (300-1)		NA
LNAV/VNAV DA	1659-4	942 (1000-4)		NA
LNAV MDA	1460-1 743 (800-1)	1460-1 1/4 743 (800-1 1/4)	1460-2 1/4 743 (800-2 1/4)	NA
CIRCLING	1520-1 803 (900-1)	1520-1 1/4 803 (900-1 1/4)	1560-2 1/2 843 (900-2 1/2)	NA



REIL Rwy 9 and 27 **📻**
MRL Rlys 9-27 and 18-36 **📻**