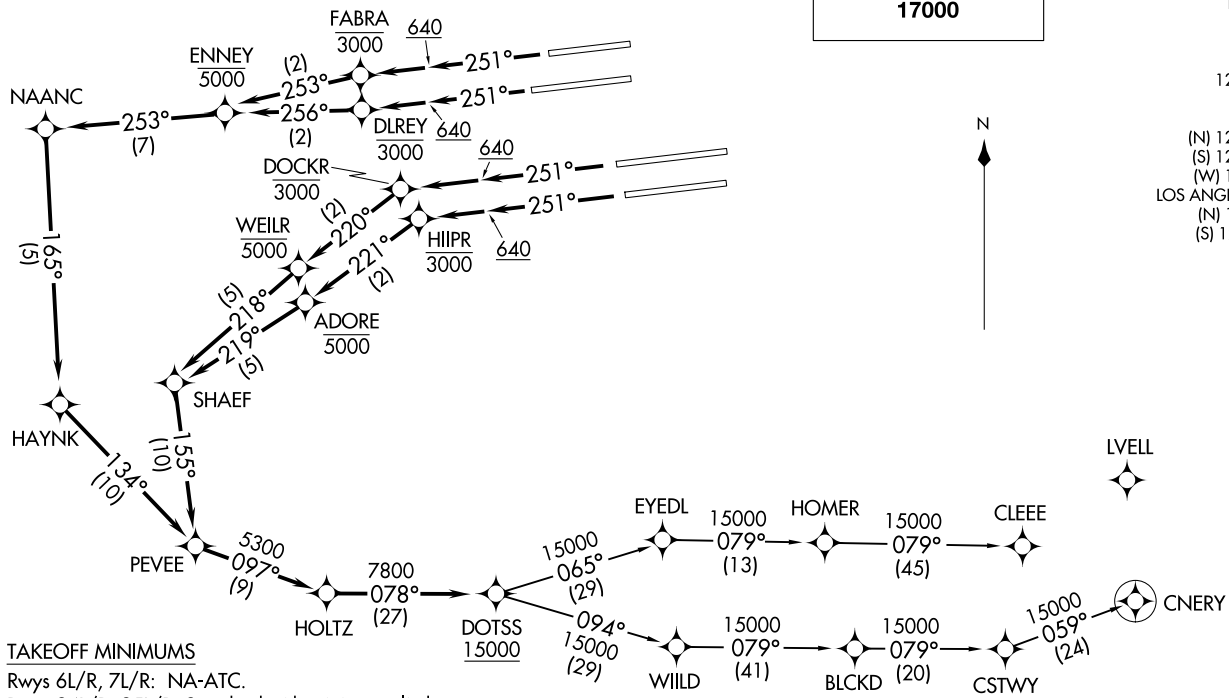


**TOP ALTITUDE:
17000**

SOCAL DEP CON 124.3 363.2
 D-ATIS DEP 135.65
 CLNC DEL 120.35 327.0
 CPDLC
 GND CON
 (N) 121.65 327.0
 (S) 121.75 327.0
 (W) 121.4 327.0
 LOS ANGELES TOWER
 (N) 133.9 239.3
 (S) 120.95 379.1



TAKEOFF MINIMUMS

Rwys 6L/R, 7L/R: NA-ATC.
 Rwys 24L/R, 25L/R: Standard with minimum climb of 500' per NM to 640.

- NOTE: DME/DME/IRU or GPS required.
- NOTE: RADAR required.
- NOTE: RNAV 1.
- NOTE: Turbojet aircraft only.
- NOTE: Turn at HIIPR and DOCKR are required for ATC separation.

(CONTINUED ON FOLLOWING PAGE)

NOTE: Chart not to scale.

DOTSS TWO DEPARTURE (RNAV)
(DOTSS2.DOTSS) 17AUG17

LOS ANGELES, CALIFORNIA
LOS ANGELES INTL (LAX)

(DOTSS2.DOTSS) 25331
DOTSS TWO DEPARTURE (RNAV)

AL-237 (FAA)

LOS ANGELES INTL (LAX)
LOS ANGELES, CALIFORNIA



DEPARTURE ROUTE DESCRIPTION

TAKEOFF RUNWAY 24L: Climb heading 251° to 640, then climb direct to cross DLREY at or below 3000, then on track 256° to cross ENNEY at or below 5000, then on depicted route to cross DOTSS at or above 15000, thence. . . .

TAKEOFF RUNWAY 24R: Climb heading 251° to 640, then climb direct to cross FABRA at or below 3000, then on track 253° to cross ENNEY at or below 5000, then on depicted route to cross DOTSS at or above 15000, thence. . . .

TAKEOFF RUNWAY 25L: Climb heading 251° to 640, then climb direct to cross HIIIPR at or below 3000, then on track 221° to cross ADORE at or below 5000, then on depicted route to cross DOTSS at or above 15000, thence. . . .

TAKEOFF RUNWAY 25R: Climb heading 251° to 640, then climb direct to cross DOCKR at or below 3000, then on track 220° to cross WEILR at or below 5000, then on depicted route to cross DOTSS at or above 15000, thence. . . .

. . . .on (transition). Maintain 17000. Expect filed altitude five minutes after departure.

CLEEE TRANSITION (DOTSS2.CLEEE)

CNERY TRANSITION (DOTSS2.CNERY)

SW-3, 11 JUN 2026 to 09 JUL 2026

SW-3, 11 JUN 2026 to 09 JUL 2026