

KYL0W ONE DEPARTURE (RNAV) (Departure Routes)

RNAV 1- DME/DME/IRU or GPS. From KYLOW on FICKY, GROGU and DINTY Transitions: GPS.

MCKEY, RIZIN, SCTRR and STOKD Transitions: RADAR required for non-GPS equipped aircraft.

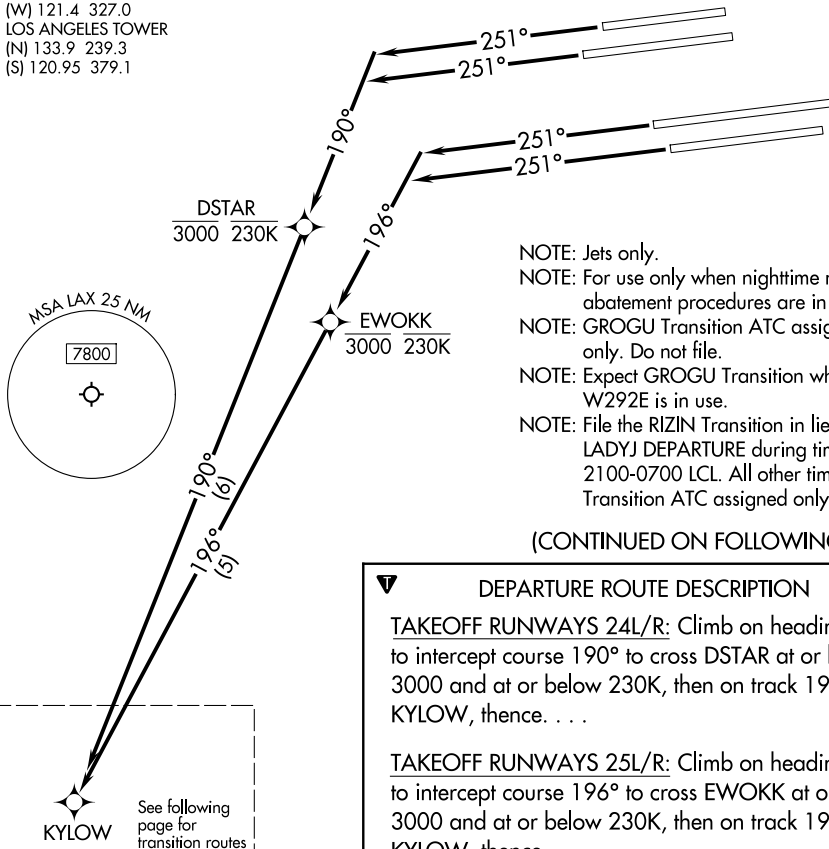
TOP ALTITUDE:
FICKY and GROGU TRANSITIONS: 14000;
SCTRR, STOKD, MCKEY, DINTY, and RIZIN TRANSITIONS: FL230

SOCAL DEP CON
124.3 363.2
D-ATIS DEP
135.65
CLNC DEL
120.35 327.0
CPDLC
GND CON
(N) 121.65 327.0
(S) 121.75 327.0
(W) 121.4 327.0
LOS ANGELES TOWER
(N) 133.9 239.3
(S) 120.95 379.1

TAKEOFF MINIMUMS

Rwy 24L: Standard with minimum climb of 280' per NM to 628.
Rwy 24R: Standard with minimum climb of 260' per NM to 628.
Rwy 25L: Standard with minimum climb of 230' per NM to 628.
Rwy 25R: Standard with minimum climb of 260' per NM to 628.

SW-3, 11 JUN 2026 to 09 JUL 2026



- NOTE: Jets only.
- NOTE: For use only when nighttime noise abatement procedures are in effect.
- NOTE: GROGU Transition ATC assigned only. Do not file.
- NOTE: Expect GROGU Transition when W292E is in use.
- NOTE: File the RIZIN Transition in lieu of the LADYJ DEPARTURE during time periods 2100-0700 LCL. All other times RIZIN Transition ATC assigned only.

(CONTINUED ON FOLLOWING PAGE)

DEPARTURE ROUTE DESCRIPTION

TAKEOFF RUNWAYS 24L/R: Climb on heading 251° to intercept course 190° to cross DSTAR at or below 3000 and at or below 230K, then on track 190° to KYLOW, thence. . . .

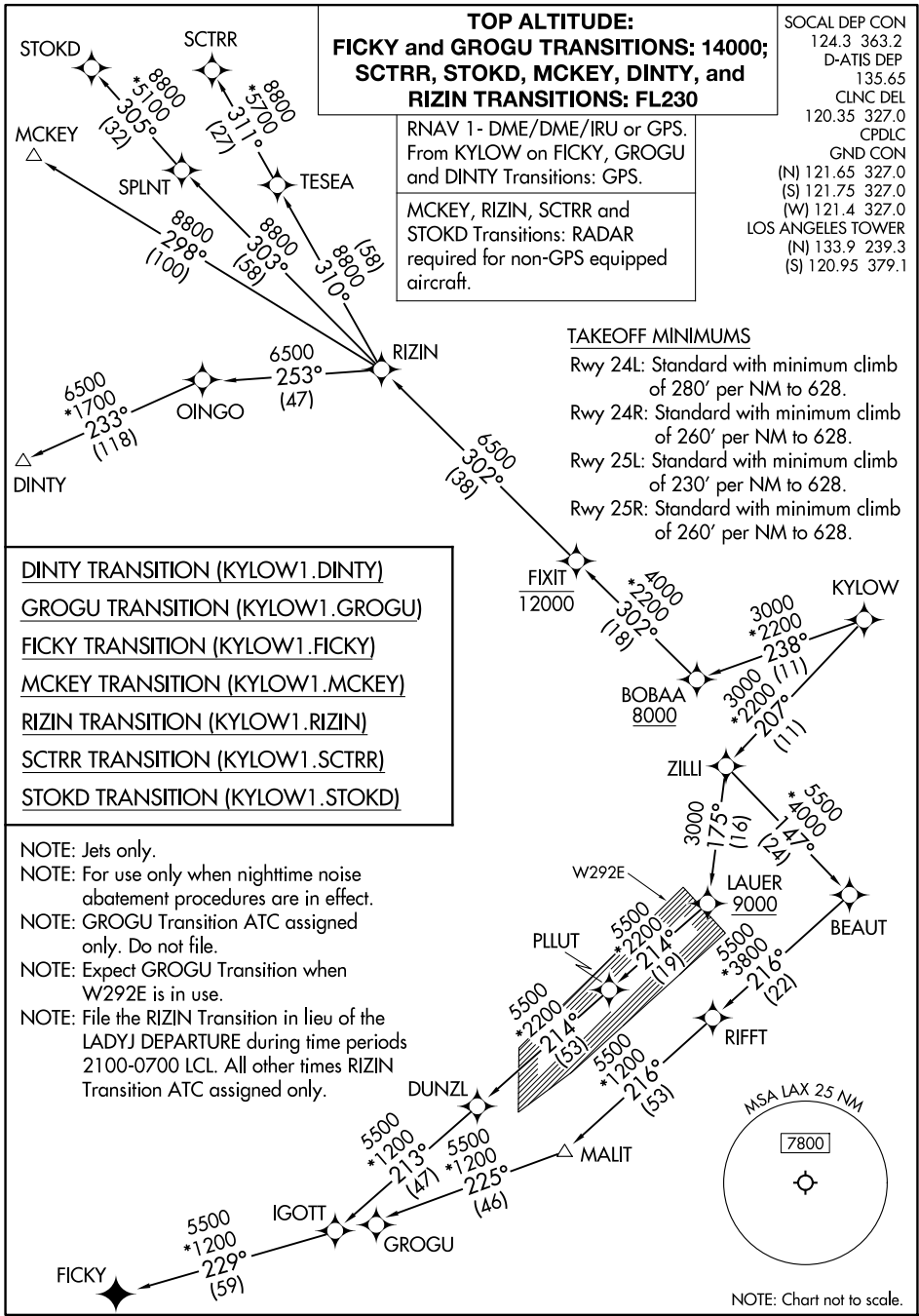
TAKEOFF RUNWAYS 25L/R: Climb on heading 251° to intercept course 196° to cross EWOKK at or below 3000 and at or below 230K, then on track 196° to KYLOW, thence. . . .

. . . .(transition). Departures on FICKY and GROGU Transitions maintain 14000. All other Transitions maintain FL230. Expect filed altitude 10 minutes after departure.

NOTE: Chart not to scale.

SW-3, 11 JUN 2026 to 09 JUL 2026

KYLOW ONE DEPARTURE (RNAV) (Transition Routes)



TOP ALTITUDE:
FICKY and GROGU TRANSITIONS: 14000;
SCTRR, STOKD, MCKEY, DINTY, and
RIZIN TRANSITIONS: FL230

RNAV 1 - DME/DME/IRU or GPS.
 From KYLOW on FICKY, GROGU
 and DINTY Transitions: GPS.

MCKEY, RIZIN, SCTRR and
 STOKD Transitions: RADAR
 required for non-GPS equipped
 aircraft.

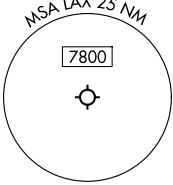
SOCAL DEP CON 124.3 363.2
 D-ATIS DEP 135.65
 CLNC DEL 120.35 327.0
 CPDLC
 GND CON (N) 121.65 327.0
 (S) 121.75 327.0
 (W) 121.4 327.0
 LOS ANGELES TOWER (N) 133.9 239.3
 (S) 120.95 379.1

TAKEOFF MINIMUMS

Rwy 24L: Standard with minimum climb
 of 280' per NM to 628.
 Rwy 24R: Standard with minimum climb
 of 260' per NM to 628.
 Rwy 25L: Standard with minimum climb
 of 230' per NM to 628.
 Rwy 25R: Standard with minimum climb
 of 260' per NM to 628.

- DINTY TRANSITION (KYLOW1.DINTY)
- GROGU TRANSITION (KYLOW1.GROGU)
- FICKY TRANSITION (KYLOW1.FICKY)
- MCKEY TRANSITION (KYLOW1.MCKEY)
- RIZIN TRANSITION (KYLOW1.RIZIN)
- SCTRR TRANSITION (KYLOW1.SCTRR)
- STOKD TRANSITION (KYLOW1.STOKD)

- NOTE: Jets only.
- NOTE: For use only when nighttime noise abatement procedures are in effect.
- NOTE: GROGU Transition ATC assigned only. Do not file.
- NOTE: Expect GROGU Transition when W292E is in use.
- NOTE: File the RIZIN Transition in lieu of the LADYJ DEPARTURE during time periods 2100-0700 LCL. All other times RIZIN Transition ATC assigned only.



NOTE: Chart not to scale.

KYLOW ONE DEPARTURE (RNAV) (Transition Routes)

(KYLOW1.KYLOW) 11JUL24

SW-3, 11 JUN 2026 to 09 JUL 2026

SW-3, 11 JUN 2026 to 09 JUL 2026