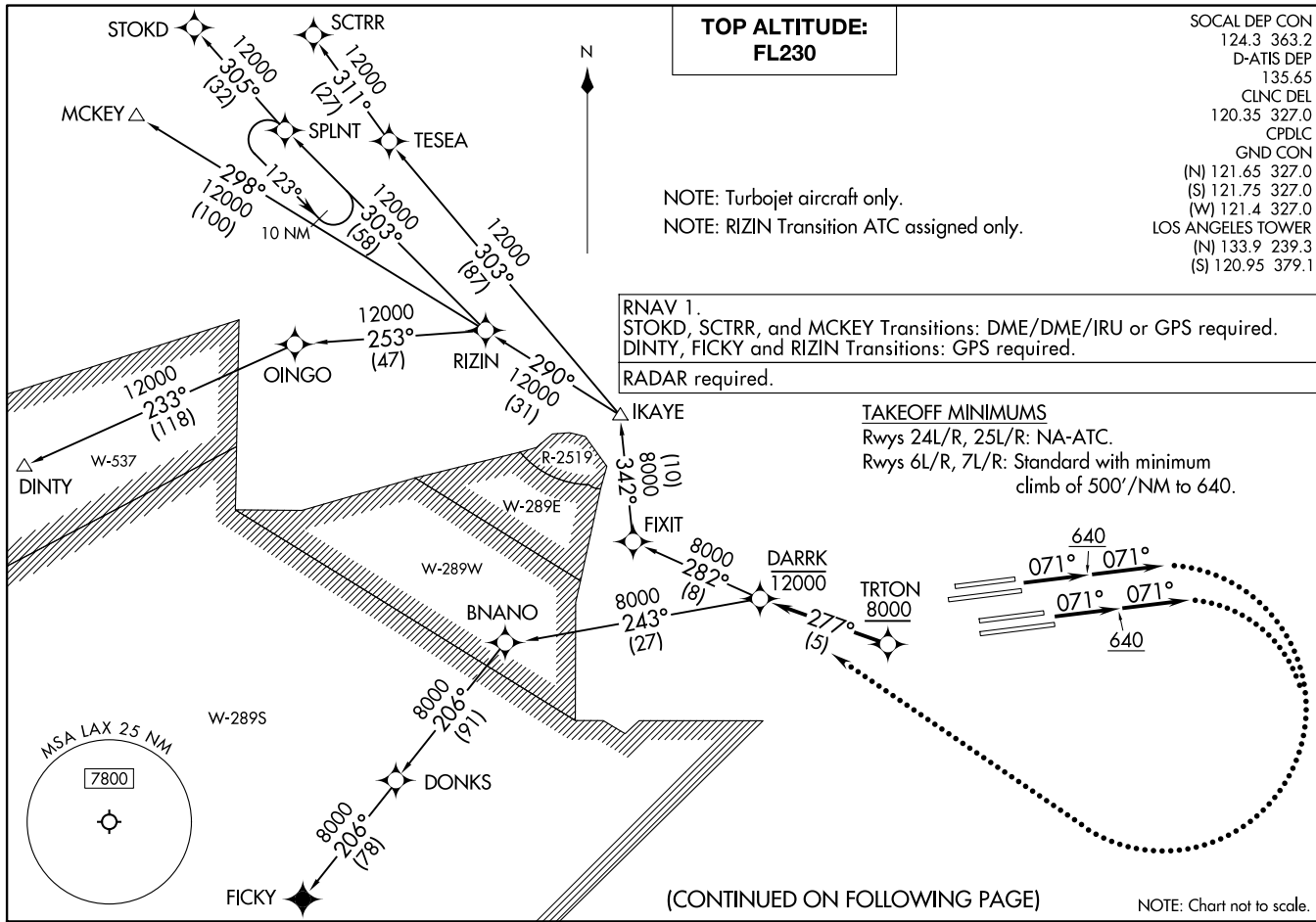


TRITON THREE DEPARTURE (RNAV)
(TRITON3, TRITON) 14MAY26

LOS ANGELES, CALIFORNIA
LOS ANGELES INTL (LAX)



**TOP ALTITUDE:
FL230**

SOCAL DEP CON 124.3 363.2
 D-ATIS DEP 135.65
 CLNC DEL 120.35 327.0
 CPDLC
 GND CON (N) 121.65 327.0
 (S) 121.75 327.0
 (W) 121.4 327.0
 LOS ANGELES TOWER (N) 133.9 239.3
 (S) 120.95 379.1

NOTE: Turbjet aircraft only.
NOTE: RIZIN Transition ATC assigned only.

RNAV 1.
 STOKD, SCTRR, and MCKEY Transitions: DME/DME/IRU or GPS required.
 DINTY, FICKY and RIZIN Transitions: GPS required.
 RADAR required.

TAKEOFF MINIMUMS
 Rwy's 24L/R, 25L/R: NA-ATC.
 Rwy's 6L/R, 7L/R: Standard with minimum climb of 500'/NM to 640.

(CONTINUED ON FOLLOWING PAGE)

NOTE: Chart not to scale.

(TRITON3, TRITON) 26134
TRITON THREE DEPARTURE (RNAV)

AL-237 (FAA)

LOS ANGELES INTL (LAX)
LOS ANGELES, CALIFORNIA



DEPARTURE ROUTE DESCRIPTION

TAKEOFF RUNWAYS 6L/R, 7L/R: Climb heading 071° to 640 then climb on heading 071°, or as assigned by ATC, for RADAR vectors to cross TRTON at or above 8000, thence

. . . . on track 277° to cross DARRK at or below 12000 then on transition. Maintain FL230. Expect filed altitude 5 minutes after departure.

LOST COMMUNICATIONS

If not in contact with departure control within 5 minutes after departure, turn right and proceed direct DARRK waypoint, cross DARRK at or below 12000', climb to FL230 or filed altitude, whichever is lower, and when able proceed direct filed route or assigned route/fix/transition. Aircraft filing FL240 or above, climb to filed altitude ten minutes after departure.

DINTY TRANSITION (TRTON3.DINTY)

FICKY TRANSITION (TRTON3.FICKY)

MCKEY TRANSITION (TRTON3.MCKEY)

RIZIN TRANSITION (TRTON3.RIZIN)

SCTRR TRANSITION (TRTON3.SCTRR)

STOKD TRANSITION (TRTON3.STOKD)

SW-3, 11 JUN 2026 to 09 JUL 2026

SW-3, 11 JUN 2026 to 09 JUL 2026