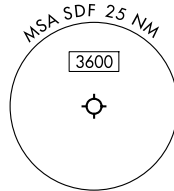


**TOP ALTITUDE:  
13000**

RNAV 1 - DME/DME/IRU or GPS.

RADAR required for non-GPS equipped aircraft.

LOUISVILLE DEP CON  
132.075 327.0  
D-ATIS 118.725  
CLNC DEL  
126.1 275.8  
CPDLC  
GND CON  
121.7 348.6  
LOUISVILLE TOWER  
124.2 257.8



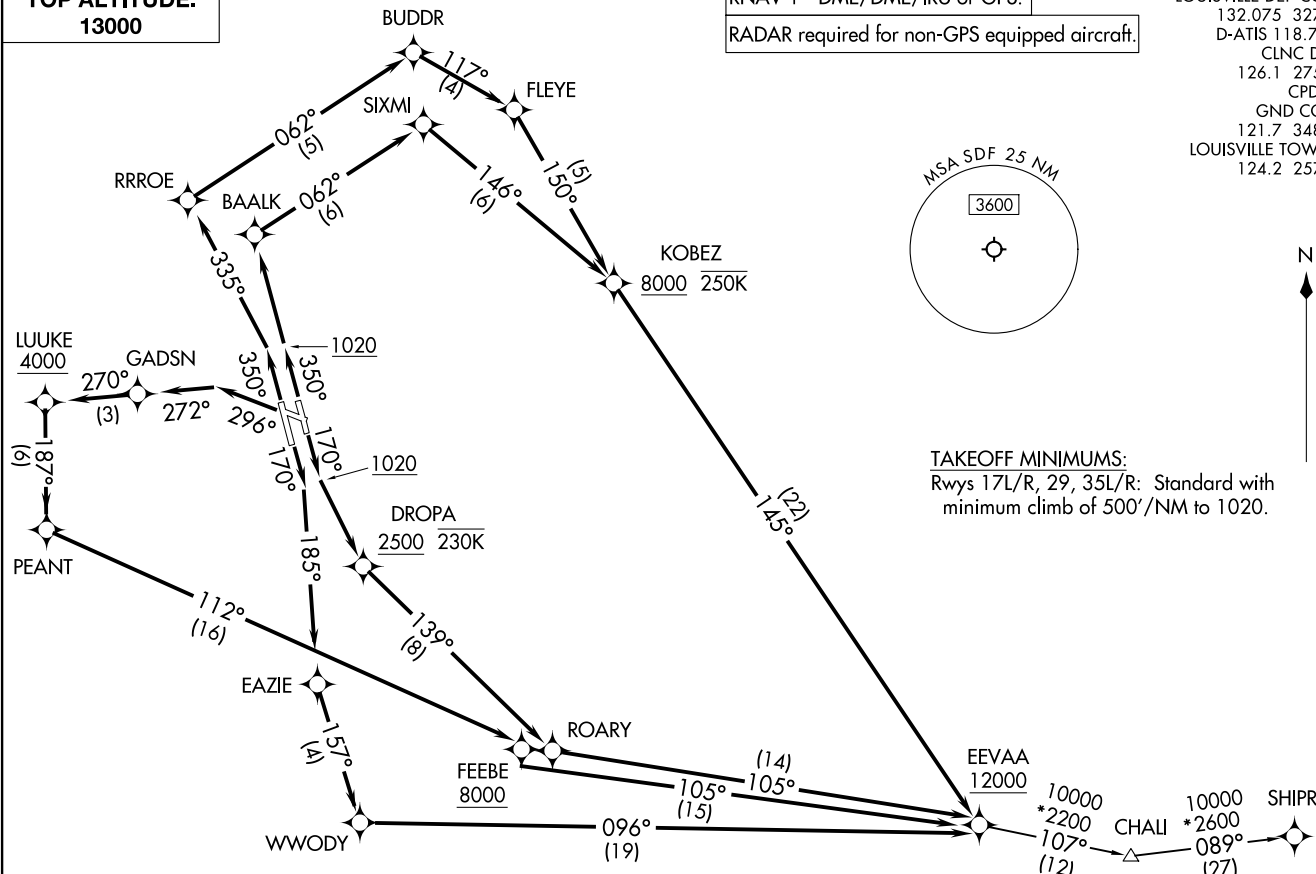
**TAKEOFF MINIMUMS:**

Rwys 17L/R, 29, 35L/R: Standard with minimum climb of 500'/NM to 1020.



EEVAA ONE DEPARTURE (RNAV)  
(EEVAA1.EEVAA) 11JUL24

LOUISVILLE, KENTUCKY  
LOUISVILLE MUHAMMAD ALI INTL (SDF)



(CONTINUED ON FOLLOWING PAGE)

NOTE: Chart not to scale.

(EEVAA1.EEVAA) 24193  
EEVAA ONE DEPARTURE (RNAV)

LOUISVILLE, KENTUCKY  
LOUISVILLE MUHAMMAD ALI INTL (SDF)

A1-239 (FAA)

# EEVAA ONE DEPARTURE (RNAV)



## DEPARTURE ROUTE DESCRIPTION

TAKEOFF RUNWAY 17L: Climb on heading 170° to 1020, then direct to cross DROPA at or above 2500 and at or below 230K, then on track 139° to ROARY, then on track 105° to cross EEVAA at or above 12000, thence ...

TAKEOFF RUNWAY 17R: Climb on heading 170° to intercept course 185° to EAZIE, then on track 157° to WWODY, then on track 096° to cross EEVAA at or above 12000, thence ...

TAKEOFF RUNWAY 29: Climb on heading 296° to intercept course 272° to GADSN, then on track 270° to cross LUUKE at or above 4000, then on track 187° to PEANT, then on track 112° to cross FEEBE at or above 8000, then on track 105° to cross EEVAA at or above 12000, thence ...

TAKEOFF RUNWAY 35L: Climb on heading 350° to intercept course 335° to RRROE, then on track 062° to BUDDR, then on track 117° to FLEYE, then on track 150° to cross KOBZ at or above 8000 and at or below 250K, then on track 145° to cross EEVAA at or above 12000, thence ...

TAKEOFF RUNWAY 35R: Climb on heading 350° to 1020, then direct BAALK, then on track 062° to SIXMI, then on track 146° to cross KOBZ at or above 8000 and at or below 250K, then on track 145° to cross EEVAA at or above 12000, thence ...

... then on transition, maintain 13000. Expect filed altitude 10 minutes after departure.

SHIPR TRANSITION (EEVAA1.SHIPR)

SE-1, 11 JUN 2026 to 09 JUL 2026

SE-1, 11 JUN 2026 to 09 JUL 2026