

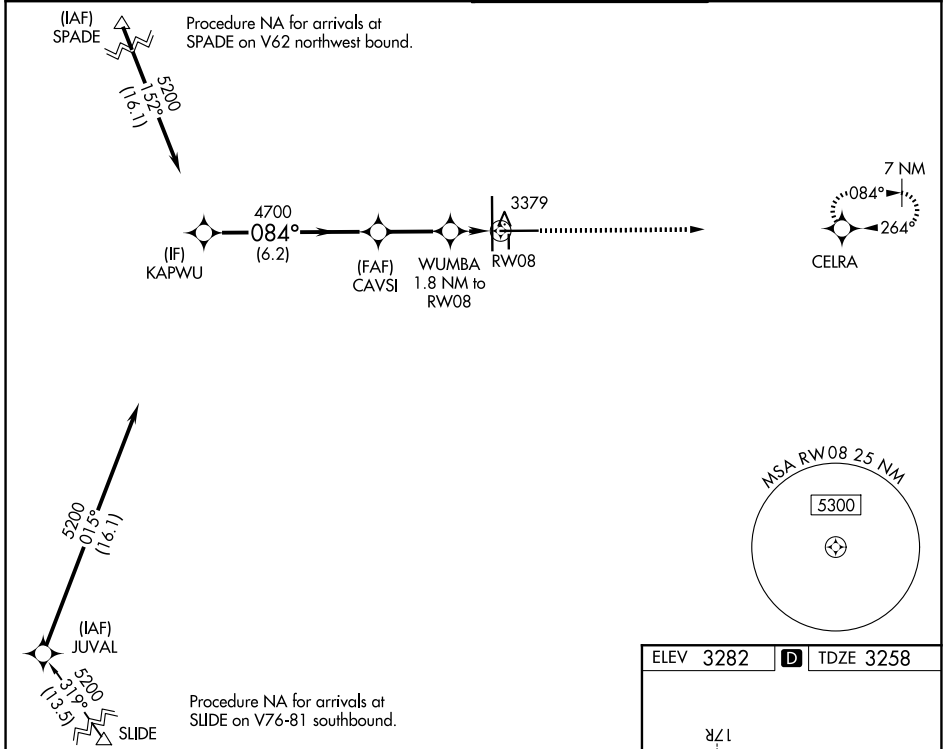
WAAS CH <b>97327</b> <b>W08A</b>	APP CRS <b>084°</b>	Rwy Ldg TDZE Apt Elev	<b>8003</b> <b>3258</b> <b>3282</b>
--	------------------------	-----------------------------	---

# RNAV (GPS) RWY 8

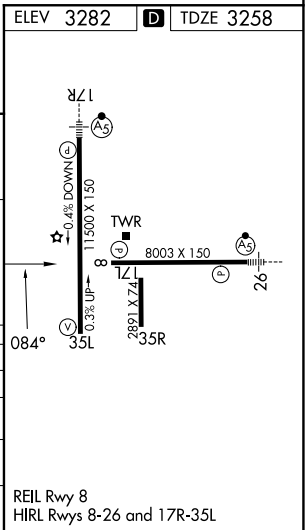
LUBBOCK PRESTON SMITH INTL (LBB)

RNP APCH.	MISSED APPROACH: Climb to 5000 direct CELRA and hold.
-----------	---

ATIS <b>125.3 270.275</b>	LUBBOCK APP CON <b>119.2 351.8</b>	LUBBOCK TOWER <b>120.5 239.3</b>	GND CON <b>121.9 348.6</b>
------------------------------	---------------------------------------	-------------------------------------	-------------------------------



KAPWU	5200	CAVSI	4700	WUMBA 1.8 NM to RW08	5000	CELRA
	GP 3.00° TCH 50		084°	*3880	*1 NM to RW08	*LNNAV only.
6.2 NM		2.6 NM		0.8 NM	1 NM	
CATEGORY	A	B	C	D	E	
LPV DA	3458-3/4		200 (200-3/4)			
LNNAV/VNAV DA	3544-7/8		286 (300-7/8)			
LNNAV MDA	3640-1	382 (400-1)		3640-1 1/8	382 (400-1 1/8)	
CIRCLING	3720-1 438 (500-1)	3740-1 458 (500-1)	3880-1 1/2 598 (600-1 1/2)	3940-2 658 (700-2)	4100-3 818 (900-3)	



SC-2, 11 JUN 2026 to 09 JUL 2026

SC-2, 11 JUN 2026 to 09 JUL 2026