

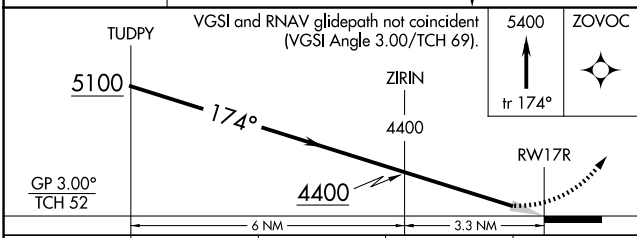
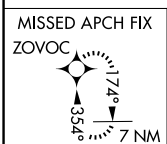
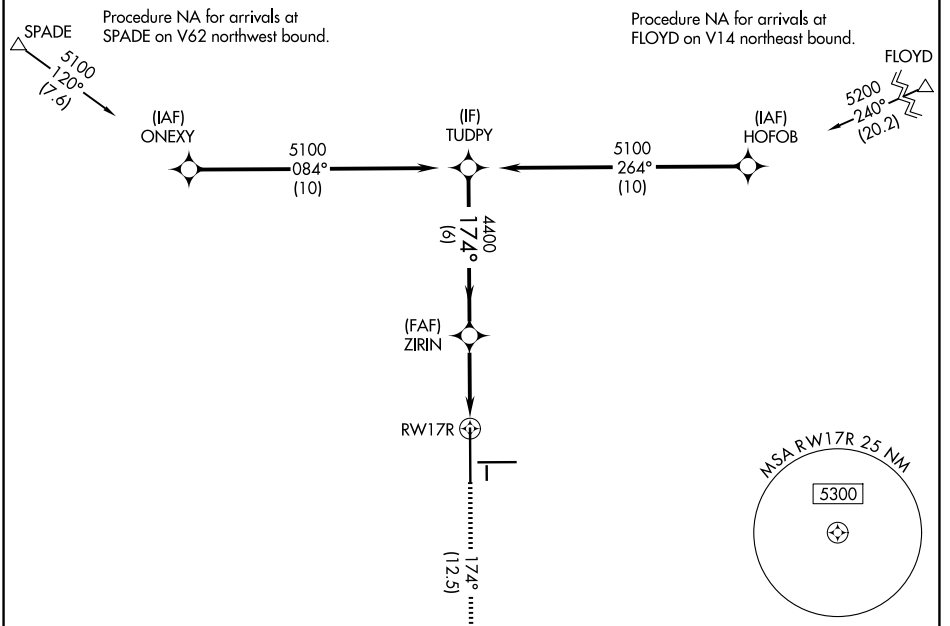
APP CRS 174°	Rwy Ldg 11500 TDZE 3282 Apt Elev 3282
------------------------	--

RNAV (RNP) Z RWY 17R

LUBBOCK PRESTON SMITH INTL (LBB)

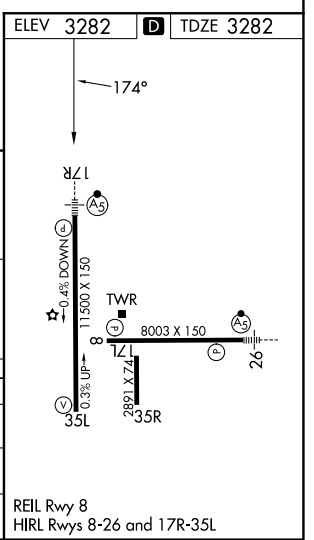
RNP AR APCH - GPS, min RNP 0.50. Authorization required.		MALSR	MISSED APPROACH: Climb to 5400 on 174° track to ZOVOC and hold.
For uncompensated Baro-VNAV systems, procedure NA below -11°C or above 54°C. For inop ALS, increase RNP 0.16 all Cats visibility to RVR 4500 and increase RNP 0.30 all Cats visibility to RVR 5500.			

ATIS 125.3 270.275	LUBBOCK APP CON 119.2 351.8	LUBBOCK TOWER 120.5 239.3	GND CON 121.9 348.6
------------------------------	---------------------------------------	-------------------------------------	-------------------------------



CATEGORY	A	B	C	D
RNP 0.16 DA		3570/24	288 (300-½)	
RNP 0.30 DA		3641/30	359 (400-¾)	

AUTHORIZATION REQUIRED



SC-2, 11 JUN 2026 to 09 JUL 2026

SC-2, 11 JUN 2026 to 09 JUL 2026