

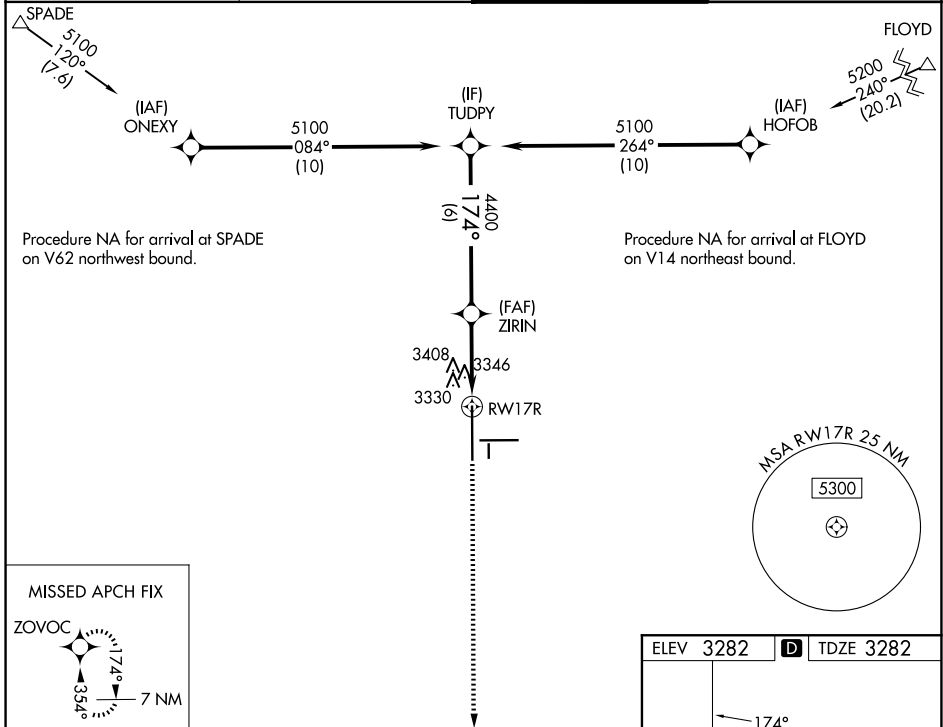
WAAS CH 40028 W17A	APP CRS 174°	Rwy Ldg TDZE 3282 Apt Elev 3282
--	------------------------	---

RNAV (GPS) Y RWY 17R

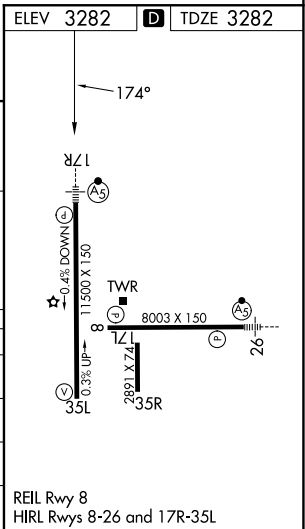
LUBBOCK PRESTON SMITH INTL (LBB)

RNP APCH	<p>▼ For uncompensated Baro-VNAV systems, LNAV/VNAV NA below -12°C or above 51°C. ▲ For inop ALS increase LPV Cat E visibility to RVR 4000, LNAV/VNAV Cat E visibility to RVR 5000 and LNAV Cat A/B visibility to RVR 5500 and Cat C/D/E visibility to RVR 6000. ** RVR 1800 authorized with use of FD or AP or HUD to DA.</p>	MALS R	MISSED APPROACH: Climb to 5400 direct ZOVOC and hold.
----------	--	--------	--

ATIS 125.3 270.275	LUBBOCK APP CON 119.2 351.8	LUBBOCK TOWER 120.5 239.3	GND CON 121.9 348.6
------------------------------	---------------------------------------	-------------------------------------	-------------------------------



TUDPY	VGSI and RNAV glidepath not coincident (VGSI Angle 3.00/TCH 69).		5400	ZOVOC	
5100	174°		4400	*1 NM to RWY 17R *LNAV only.	
GP 3.00° TCH 53	6 NM	2.3 NM	1 NM		
CATEGORY	A	B	C	D	E
LPV DA **	3482/24		200 (200-½)		
LNAV/VNAV DA	3591/24		309 (400-½)		
LNAV MDA	3700/24	418 (500-½)	3700/40	418 (500-¾)	
CIRCLING	3720-1 438 (500-1)	3740-1 458 (500-1)	3880-1½ 598 (600-1½)	3940-2 658 (700-2)	4100-3 818 (900-3)



SC-2, 11 JUN 2026 to 09 JUL 2026

SC-2, 11 JUN 2026 to 09 JUL 2026