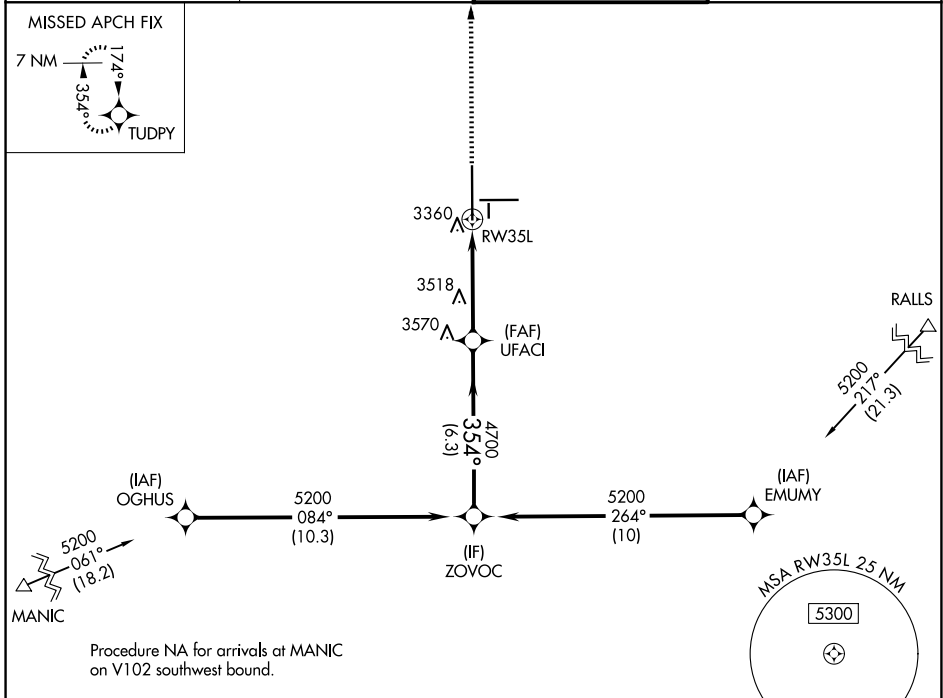


WAAS CH <b>50128</b> <b>W35A</b>	APP CRS <b>354°</b>	Rwy Ldg TDZE Apt Elev	<b>11500</b> <b>3254</b> <b>3282</b>
--	------------------------	-----------------------------	--

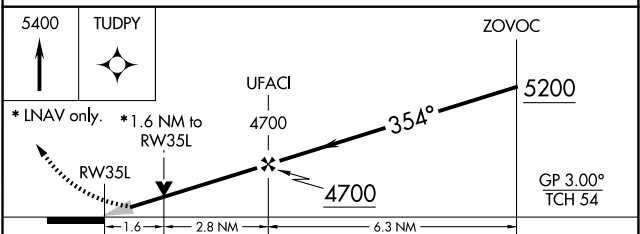
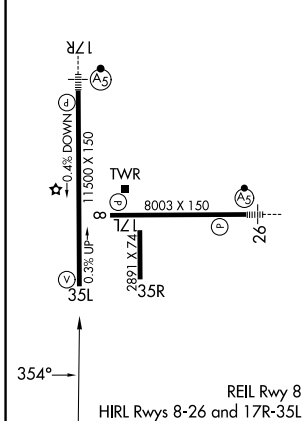
# RNAV (GPS) Y RWY 35L

LUBBOCK PRESTON SMITH INTL (LBB)

RNP APCH.		MISSED APPROACH: Climb to 5400 direct TUDPY and hold.	
<p>▼ For uncompensated Baro-VNAV systems, LNAV/VNAV NA below -12° C or above 51° C.</p>			
ATIS <b>125.3 270.275</b>	LUBBOCK APP CON <b>119.2 351.8</b>	LUBBOCK TOWER <b>120.5 239.3</b>	GND CON <b>121.9 348.6</b>



ELEV 3282	<b>D</b>	TDZE 3254
-----------	----------	-----------



CATEGORY	A	B	C	D	E
LPV DA	3454-3/4		200 (200-3/4)		
LNAV/VNAV DA	3673-1/4		419 (400-1/4)		
LNAV MDA	3820-1	566 (600-1)	3820-1 5/8		566 (600-1 5/8)
CIRCLING	3820-1	538 (600-1)	3880-1 5/8 598 (600-1 5/8)	3940-2 658 (700-2)	4100-3 818 (900-3)

SC-2, 11 JUN 2026 to 09 JUL 2026

SC-2, 11 JUN 2026 to 09 JUL 2026