

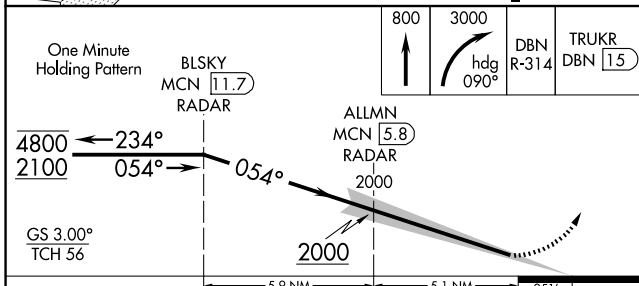
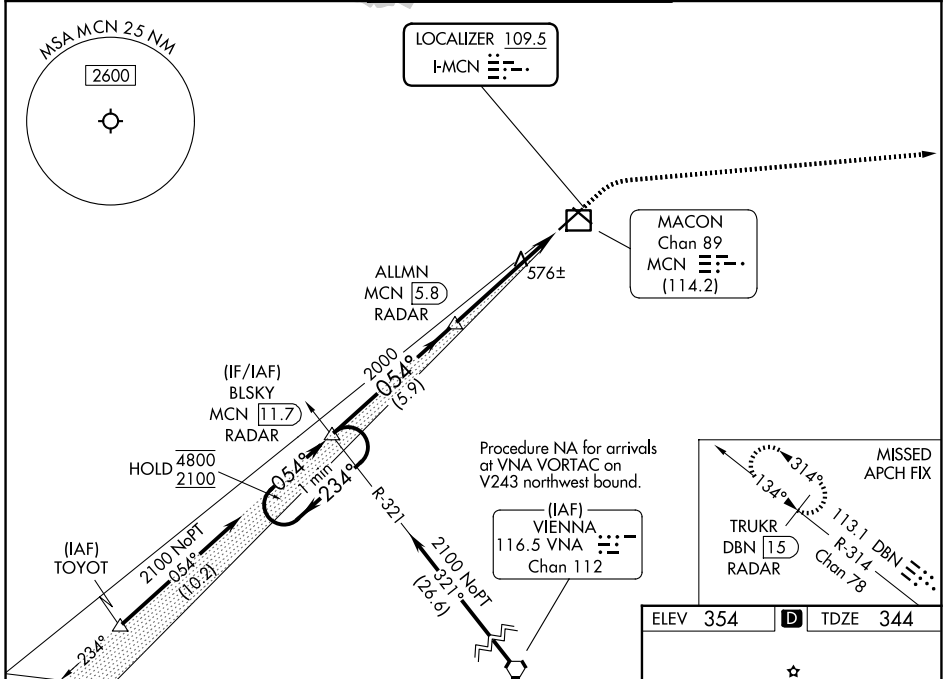
LOC I-MCN	APP CRS	Rwy Ldg	6221
109.5	054°	TDZE	344
		Apt Elev	354

ILS RWY 5 (SA CAT I & II)
MIDDLE GEORGIA RGNL (MCN)

DME and RADAR required.

MALS MISSED APPROACH: Climb to 800 then climbing right turn to 3000 on heading 090° and DBN VORTAC R-314 to TRUKR/DBN VORTAC 15 DME/RADAR and hold.

ATIS	ATLANTA APP CON *	MACON TOWER *	GND CON	UNICOM
120.775	124.2 279.6	128.2 (CTAF) 257.8	121.65	122.95



ELEV	354	D	TDZE	344
------	-----	---	------	-----

TWR

14

23

32

5000 X 150

6500 X 150

0.4% UP

H IRL Rwy 5-23

M IRL Rwy 14-32

R IRL Rws 23 and 32

CATEGORY	A	B	C	D
S-ILS 5	SA CAT I	RA 216/14	150 DA 494	
S-ILS 5	SA CAT II	RA 151/12	100 DA 444	

SA CATEGORY I & II ILS - SPECIAL AIRCREW & AIRCRAFT CERTIFICATION REQUIRED

SE-4, 11 JUN 2026 to 09 JUL 2026

SE-4, 11 JUN 2026 to 09 JUL 2026