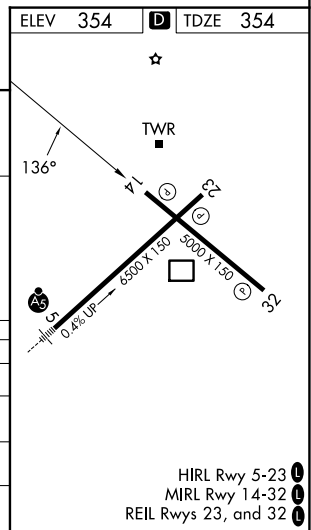
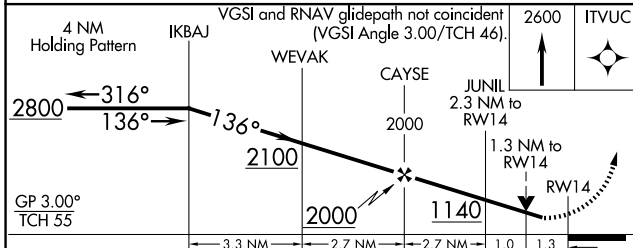
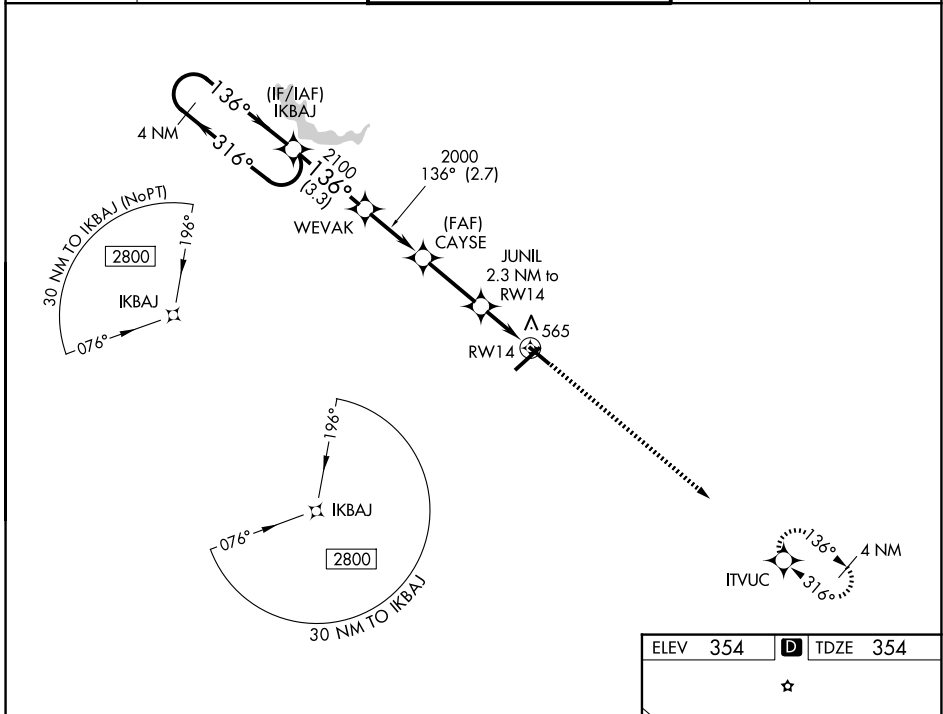


| | | |
|---------------------------------|------------------------|---|
| WAAS CH 90322 W14A | APP CRS 136° | Rwy Ldg 5000 TDZE 354 Apt Elev 354 |
|---------------------------------|------------------------|---|

RNAV (GPS) RWY 14

MIDDLE GEORGIA RGNL (MCN)

| | | | | |
|---|---|--|---|-------------------------|
| RNP APCH-GPS. | | | MISSED APPROACH: Climb to 2600 direct ITVUC and hold. | |
| ⚠ For uncompensated Baro-VNAV systems, LNAV/VNAV NA below -8°C or above 54°C. Rwy 14 helicopter visibility reduction below 3/4 SM NA. | | | | |
| ATIS 120.775 | ATLANTA APP CON ★ 124.2 279.6 | MACON TOWER ★ 128.2 (CTAF) 257.8 | GND CON 121.65 | UNICOM 122.95 |



| | | | | |
|--------------|-------------------|---|--|---|
| CATEGORY | A | B | C | D |
| LPV DA | 652-1 | | 298 (300-1) | |
| LNAV/VNAV DA | 745-1 1/4 | | 391 (400-1 1/4) | |
| LNAV MDA | 820-1 466 (500-1) | | 820-1 3/8 466 (500-1 3/8) | |
| CIRCLING | 900-1 546 (600-1) | | 920-1 1/2 1120-2 1/2 566 (600-1 1/2) 766 (800-2 1/2) | |

SE-4, 11 JUN 2026 to 09 JUL 2026

SE-4, 11 JUN 2026 to 09 JUL 2026