

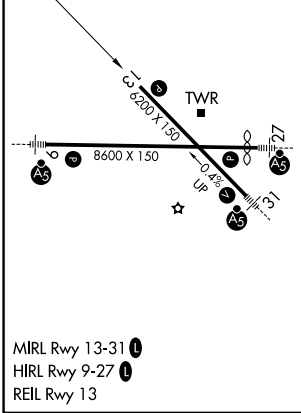
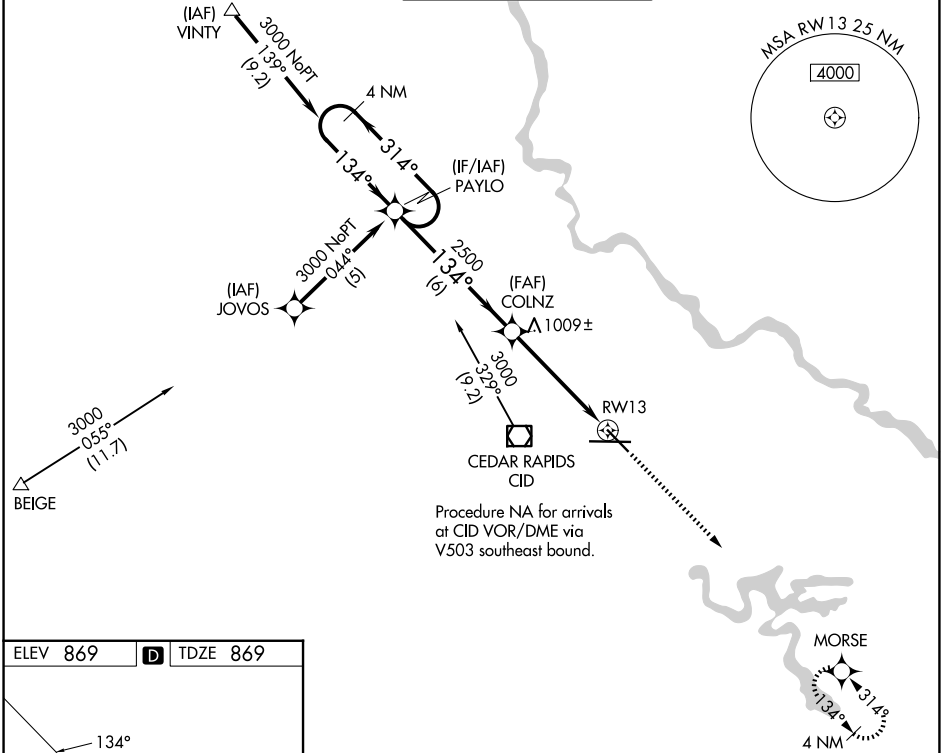
WAAS CH 86201 W13A	APP CRS 134°	Rwy Ldg TDZE Apt Elev	6200 869 869
--	------------------------	-----------------------------	---

RNAV (GPS) RWY 13

THE EASTERN IOWA (CID)

RNP APCH.		MISSED APPROACH: Climb to 3000 direct MORSE and hold.		
Baro-VNAV NA below -16°C (4°F).				

ATIS 124.15	CEDAR RAPIDS APP CON* 119.7 266.8	CEDAR RAPIDS TOWER* 118.7 (CTAF) 266.8	GND CON 121.6	UNICOM 122.95
-----------------------	---	--	-------------------------	-------------------------



ELEV 869	D	TDZE 869	VGSI and descent angles not coincident (VGSI Angle 3.00/TCH 51).	
4 NM Holding Pattern PAYLO		3000	314°	134°
GP 3.00° TCH 40		2500	1.34°	3.00°
		6 NM	3.9 NM	1 NM
CATEGORY	A	B	C	D
LPV DA	1120-1 251 (300-1)			
LNNAV/VNAV DA	1200-1¼ 331 (400-1¼)			
LNNAV MDA	1260-1 391 (400-1)			1260-1¼ 391 (400-1¼)

NC-3, 11 JUN 2026 to 09 JUL 2026

NC-3, 11 JUN 2026 to 09 JUL 2026