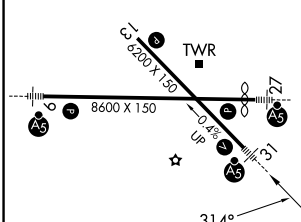
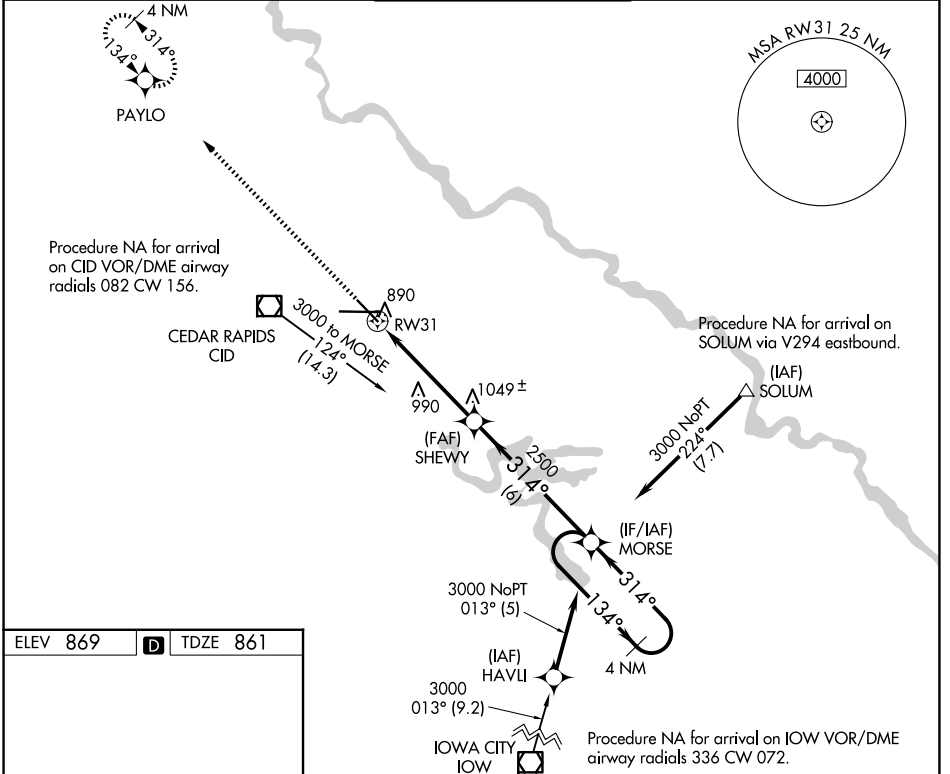


WAAS CH 77503 W31A	APP CRS 314°	Rwy Ldg TDZE Apt Elev	6200 861 869
--	------------------------	-----------------------------	---

RNAV (GPS) RWY 31

THE EASTERN IOWA (CID)

RNP APCH. Baro-VNAV NA below -16°C (4°F).		MALSR 	MISSED APPROACH: Climb to 3000 direct PAYLO and hold.	
ATIS 124.15	CEDAR RAPIDS APP CON* 119.7 266.8	CEDAR RAPIDS TOWER* 118.7 (CTAF) 266.8	GND CON 121.6	UNICOM 122.95



3000	PAYLO	MORSE	4 NM Holding Pattern
*LNNAV only	*1.1 NM to RWY 31	314°	134°
RWY 31	SHEWY	MORSE	3000
1.1	3.9 NM	6 NM	GP 3.00° TCH 43

CATEGORY	A	B	C	D
LPV DA	1120-½ 259 (300-½)			
LNNAV/VNAV DA	1140-½	279 (300-½)	1140-¾ 279 (300-¾)	
LNNAV MDA	1240-½	379 (400-½)	1240-1 379 (400-1)	

NC-3, 11 JUN 2026 to 09 JUL 2026

NC-3, 11 JUN 2026 to 09 JUL 2026