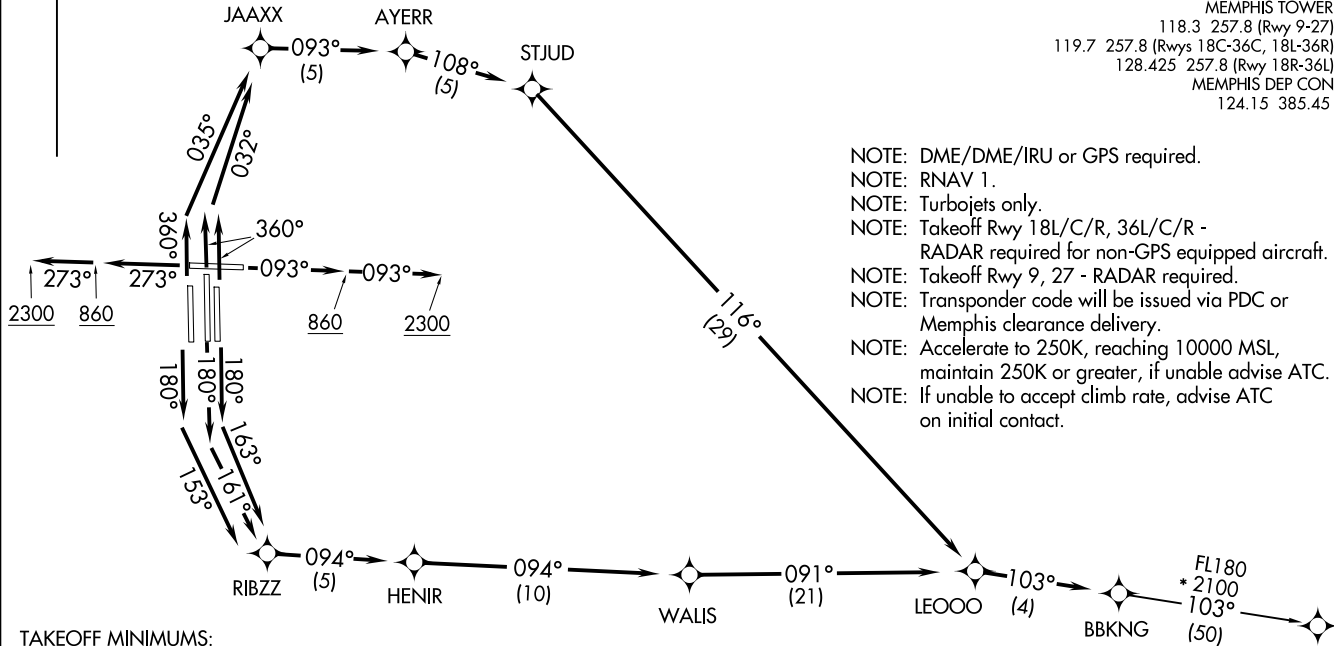


BBKNG SEVEN DEPARTURE (RNAV)  
(BBKNG7, BBKNG) 31 DECCO

FREDERICK W SMITH INTL/MEMPHIS (MTE/M)  
MEMPHIS, TENNESSEE

TOP ALTITUDE:  
5000



**TAKEOFF MINIMUMS:**

Rwy 9, 18L/C/R, 27, 36L/C/R: Standard with minimum climb of 500' per NM to 860.

NOTE: Chart not to scale.

(CONTINUED ON FOLLOWING PAGE)

D-ATIS 127.75  
 CLNC DEL 125.2  
 CPDLC  
 GND CON 121.0 379.2 (Rwy 9-27)  
 121.9 379.2 (Rwys 18C-36C, 18L-36R)  
 121.65 379.2 (Rwy 18R-36L)  
 MEMPHIS TOWER 118.3 257.8 (Rwy 9-27)  
 119.7 257.8 (Rwys 18C-36C, 18L-36R)  
 128.425 257.8 (Rwy 18R-36L)  
 MEMPHIS DEP CON 124.15 385.45

NOTE: DME/DME/IRU or GPS required.

NOTE: RNAV 1.

NOTE: Turbojets only.

NOTE: Takeoff Rwy 18L/C/R, 36L/C/R - RADAR required for non-GPS equipped aircraft.

NOTE: Takeoff Rwy 9, 27 - RADAR required.

NOTE: Transponder code will be issued via PDC or Memphis clearance delivery.

NOTE: Accelerate to 250K, reaching 10000 MSL, maintain 250K or greater, if unable advise ATC.

NOTE: If unable to accept climb rate, advise ATC on initial contact.

(BBKNG7, BBKNG) 26078  
BBKNG SEVEN DEPARTURE (RNAV)

AL-253 (FAA)  
FREDERICK W SMITH INTL/MEMPHIS (MTE/M)  
MEMPHIS, TENNESSEE



DEPARTURE ROUTE DESCRIPTION

TAKEOFF RUNWAY 9: Climb on heading 093° to 860, then continue climb to 2300 on heading 093° or assigned by ATC, for vectors to LEOOO, then on depicted route to BBKNG, thence....

TAKEOFF RUNWAY 18C: Climb on heading 180° to intercept course 161° to RIBZZ, then on depicted route to BBKNG, thence....

TAKEOFF RUNWAY 18L: Climb on heading 180° to intercept course 163° to RIBZZ, then on depicted route to BBKNG, thence....

TAKEOFF RUNWAY 18R: Climb on heading 180° to intercept course 153° to RIBZZ, then on depicted route to BBKNG, thence....

TAKEOFF RUNWAY 27: Climb on heading 273° to 860, then continue climb to 2300 on heading 273° or assigned by ATC, for vectors to LEOOO, then on depicted route to BBKNG, thence....

TAKEOFF RUNWAY 36L: Climb on heading 360° to intercept course 035° to JAAXX, then on depicted route to BBKNG, thence....

TAKEOFF RUNWAYS 36C/R: Climb on heading 360° to intercept course 032° to JAAXX, then on depicted route to BBKNG, thence....

...maintain 5000. Expect clearance to filed altitude within ten (10) minutes after departure.

KERMI TRANSITION (BBKNG7.KERMI):

SE-1, 11 JUN 2026 to 09 JUL 2026

SE-1, 11 JUN 2026 to 09 JUL 2026