

LOC/DME I-MYO 111.35 Chan 50(Y)	APP CRS 360°	Rwy Ldg TDZE Apt Elev	9000 335 341
--	------------------------	-----------------------------	---

ILS RWY 36R (CAT II & III)

FREDERICK W SMITH INTL/MEMPHIS (MEM)

⚠ Simultaneous approach authorized with Rwy 36L.
DME or RADAR required.

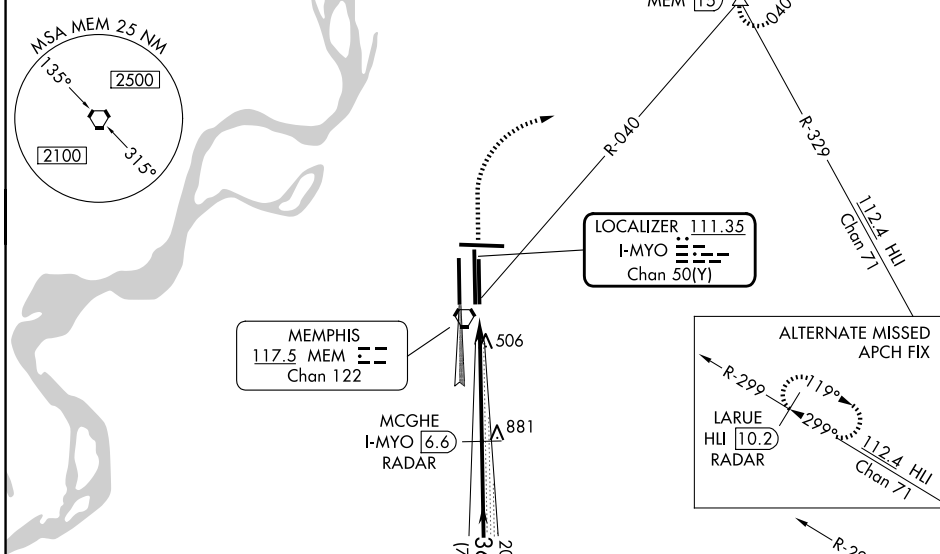
ALSF-2
A

MISSED APPROACH: Climb to 1000 then climbing right turn to 5000 via heading 070° and MEM VORTAC R-040 to OROCU INT/MEM VORTAC 1.5 DME and hold, continue climb-in-hold to 5000.

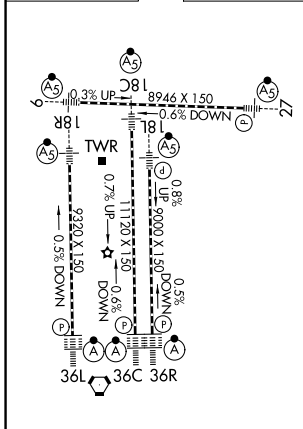
MEMPHIS APP CON 119.1 291.6 (176°-355°) 125.8 338.3 (356°-175°)	MEMPHIS TOWER (Rwy 9-27) 118.3 257.8 (Rwys 18C-36C, 18L-36R) 119.7 257.8 (Rwy 18R-36L) 128.425 257.8	GND CON (Rwy 9-27) 121.0 379.2 (Rwys 18C-36C, 18L-36R) 121.9 379.2 (Rwy 18R-36L) 121.65 379.2
---	--	---

D-ATIS
127.75

RADAR REQUIRED



ELEV 341	D	TDZE 335
----------	----------	----------



1000	5000	MEM R-040	OROCU	MCGHE I-MYO 6.6 RADAR 2000	HADAN I-MYO 14 RADAR 3000
↑	hdg 070°		△	2000	3000
VGSi and ILS glidepath not coincident (VGSi Angle 3.00/TCH 69).					
1131'		5 NM		7.3 NM	
CATEGORY	A	B	C	D	
S-ILS 36R	CAT II RA 109/12 100 DA 435				
S-ILS 36R	CAT IIIa RVR07				
S-ILS 36R	CAT IIIb RVR03				
S-ILS 36R	CAT IIIc NA				

TDZL/RCLS Rwys 18L, 18C, 18R, 36R, 36C, and 36L
HIRL all rwys

CATEGORY II & III ILS - SPECIAL AIRCREW & AIRCRAFT CERTIFICATION REQUIRED