


LOC I-SDU <b>111.95</b>	APP CRS <b>180°</b>	Rwy Ldg <b>11120</b>
		TDZE <b>290</b>
		Apt Elev <b>341</b>

# ILS or LOC RWY 18C

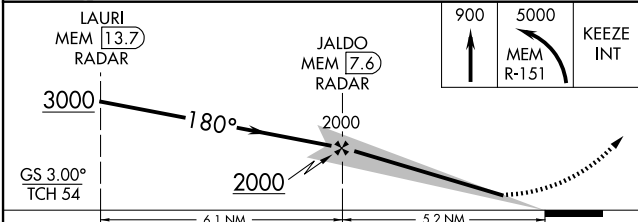
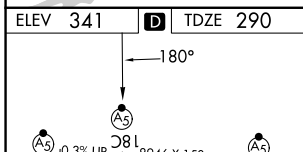
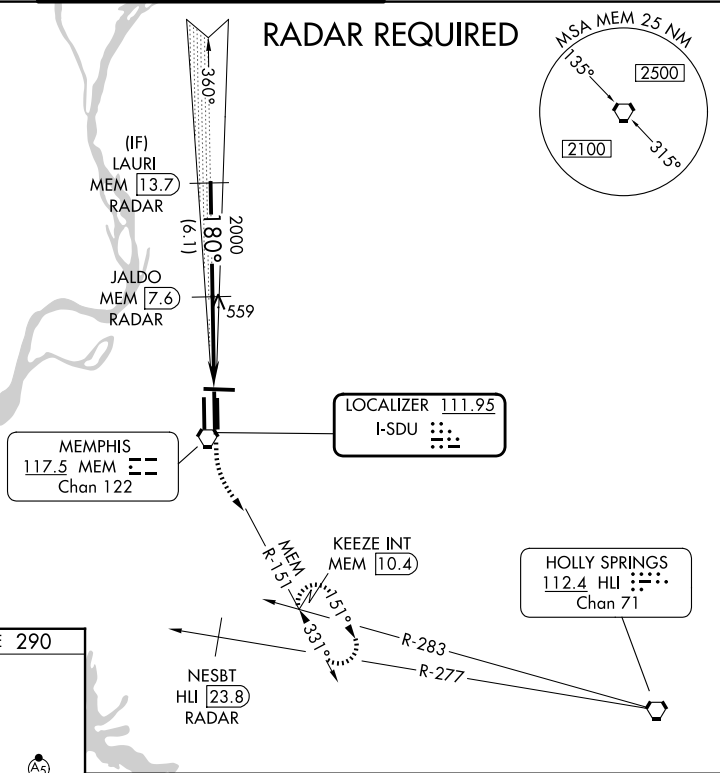
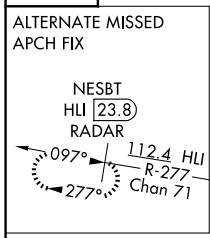
FREDERICK W SMITH INTL/MEMPHIS (MEM)

**⚠** Simultaneous approach authorized.  
**⚠** DME or RADAR required.  
 For inop ALS, increase S-ILS 18C all Cats visibility to 1½ SM.

MALSR  MISSED APPROACH: Climb to 900 then climbing left turn to 5000 on MEM VORTAC R-151 to KEEZE INT/MEM 10.4 DME and hold, continue climb-in-hold to 5000.

MEMPHIS APP CON	MEMPHIS TOWER	GND CON
<b>119.1 291.6</b> (176°-355°)	(Rwy 9-27) <b>118.3 257.8</b>	(Rwy 9-27) <b>121.0 379.2</b>
<b>125.8 338.3</b> (356°-175°)	(Rwys 18C-36C, 18L-36R) <b>119.7 257.8</b>	(Rwys 18C-36C, 18L-36R) <b>121.9 379.2</b>
	(Rwy 18R-36L) <b>128.425 257.8</b>	(Rwy 18R-36L) <b>121.65 379.2</b>

D-ATIS  
**127.75**



CATEGORY	A	B	C	D	E
S-ILS 18C	657/40 367 (400-¾)				
S-LOC 18C	860/24	570 (600-½)	860/50 570 (600-1)	860/60 570 (600-1¼)	860-1½ 570 (600-1½)
CIRCLING	940-1	599 (600-1)	940-1½ 599 (600-1½)	1020-2¼ 679 (700-2¼)	1140-2¾ 799 (800-2¾)

FAF to MAP 5.2 NM

Knots	60	90	120	150	180
Min:Sec	5:12	3:28	2:36	2:05	1:44

SE-1, 11 JUN 2026 to 09 JUL 2026

SE-1, 11 JUN 2026 to 09 JUL 2026