

LOC I-OOI <b>109.9</b>	APP CRS <b>180°</b>	Rwy Ldg <b>9320</b>
		TDZE <b>295</b>
		Apt Elev <b>341</b>

# ILS or LOC RWY 18R

FREDERICK W SMITH INTL/MEMPHIS (MEM)

Radar required for procedure entry, DME or RADAR required.

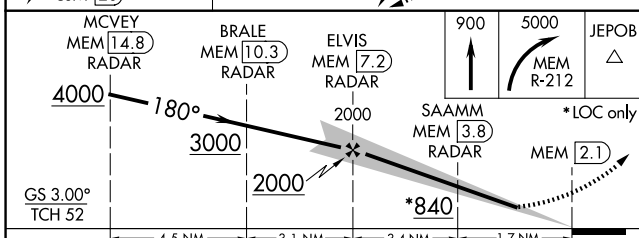
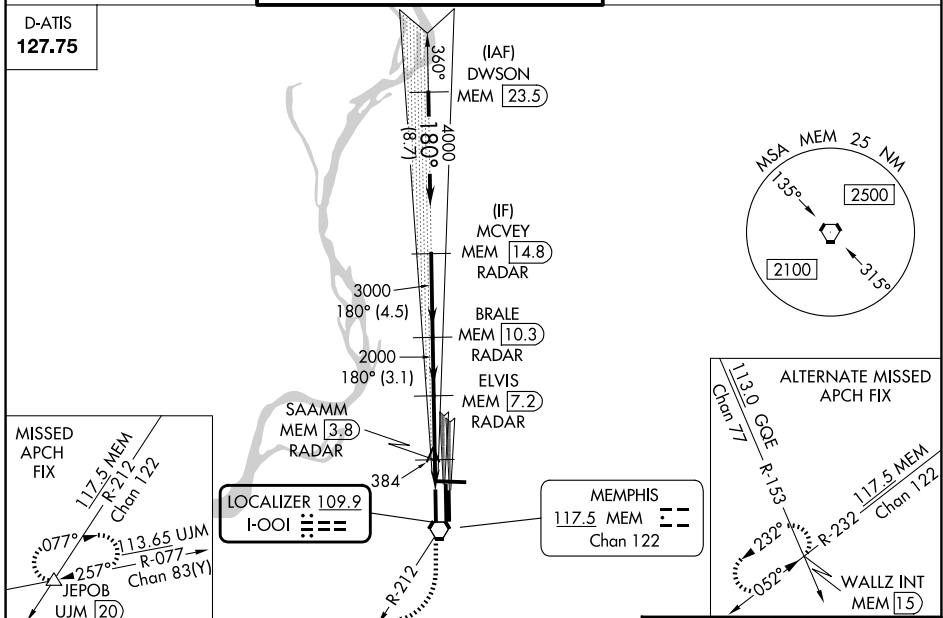
Simultaneous approach authorized. For inop ALS, increase S-ILS 18R Cat E visibility to RVR 4000, S-LOC 18R Cat E visibility to 2 SM, SAAMM fix minimums, increase S-LOC 18R Cat E visibility to 1½ SM.

MALSR



MISSED APPROACH: Climb to 900 then climbing right turn to 5000 on MEM VORTAC R-212 to JEPOB INT/UJM 20 DME and hold.

MEMPHIS APP CON		MEMPHIS TOWER		GND CON	
<b>119.1 291.6</b>	(176°-355°)	(Rwy 9-27)	<b>118.3 257.8</b>	(Rwy 9-27)	<b>121.0 379.2</b>
<b>125.8 338.3</b>	(356°-175°)	(Rwys 18C-36C, 18L-36R)	<b>119.7 257.8</b>	(Rwys 18C-36C, 18L-36R)	<b>121.9 379.2</b>
		(Rwy 18R-36L)	<b>128.425 257.8</b>	(Rwy 18R-36L)	<b>121.65 379.2</b>



ELEV 341 TDZE 295

