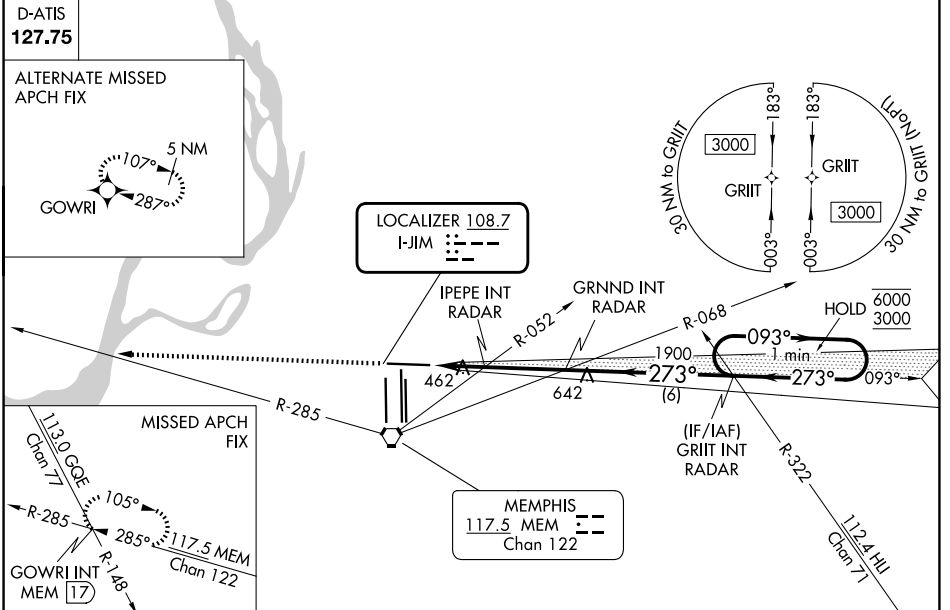


LOC I-JIM <b>108.7</b>	APP CRS <b>273°</b>	Rwy Ldg TDZE Apt Elev	<b>8946</b> <b>292</b> <b>341</b>
---------------------------	------------------------	-----------------------------	---

**ILS or LOC RWY 27**  
FREDERICK W SMITH INTL/MEMPHIS (MEM)

RNAV 1-GPS or RADAR required for procedure entry.		MALSR	MISSED APPROACH: Climb to 5000 and intercept MEM VORTAC R-285 to GOWRI INT/17 DME and hold, continue climb-in-hold to 5000.
▼ For inop ALS, increase S-ILS Cat E visibility to RVR 4000, and S-LOC Cat E visibility to 2 SM, IPEPE fix minimums S-LOC Cat E visibility to 1/4 SM. ▲ *RVR 1800 authorized with use of FD or AP or HUD to DA.			
MEMPHIS APP CON		MEMPHIS TOWER	GND CON
<b>119.1 291.6</b> (176°-355°)	(Rwy 9-27)	<b>118.3 257.8</b>	(Rwy 9-27) <b>121.0 379.2</b>
<b>125.8 338.3</b> (356°-175°)	(Rwys 18C-36C, 18L-36R)	<b>119.7 257.8</b>	(Rwys 18C-36C, 18L-36R) <b>121.9 379.2</b>
	(Rwy 18R-36L)	<b>128.425 257.8</b>	(Rwy 18R-36L) <b>121.65 379.2</b>



ELEV 341	<b>D</b>	TDZE 292	5000	MEM R-285	GOWRI INT	GRND INT RADAR	IPEPE INT RADAR	1900	273°	093°	6000	3000	One Minute Holding Pattern																																																			
VGSI and ILS glidepath not coincident (VGSI Angle 3.00/TCH 69). GS 3.00° TCH 54																																																																
<table border="1"> <thead> <tr> <th>CATEGORY</th> <th>A</th> <th>B</th> <th>C</th> <th>D</th> <th>E</th> </tr> </thead> <tbody> <tr> <td>S-ILS 27 *</td> <td colspan="5">492/24 200 (200-1/2)</td> </tr> <tr> <td>S-LOC 27</td> <td>980/24</td> <td>688 (700-1/2)</td> <td colspan="3">980-1 1/2 688 (700-1 1/2)</td> </tr> <tr> <td rowspan="2">CIRCLING</td> <td>980-1</td> <td>639 (700-1)</td> <td>980-2</td> <td>1020-2 1/4</td> <td>1140-2 3/4</td> </tr> <tr> <td colspan="2"></td> <td>639 (700-2)</td> <td>679 (700-2 1/4)</td> <td>799 (800-2 3/4)</td> </tr> <tr> <td colspan="6">IPEPE FIX MINIMUMS (DUAL VOR RECEIVERS OR RADAR REQUIRED)</td> </tr> <tr> <td>S-LOC 27</td> <td>720/24</td> <td>428 (400-1/2)</td> <td colspan="3">720/40 428 (400-3/4)</td> </tr> <tr> <td rowspan="2">CIRCLING</td> <td>940-1</td> <td>599 (600-1)</td> <td>940-1 1/2</td> <td>1020-2 1/4</td> <td>1140-2 3/4</td> </tr> <tr> <td colspan="2"></td> <td>599 (600-1 1/2)</td> <td>679 (700-2 1/4)</td> <td>799 (800-2 3/4)</td> </tr> </tbody> </table>													CATEGORY	A	B	C	D	E	S-ILS 27 *	492/24 200 (200-1/2)					S-LOC 27	980/24	688 (700-1/2)	980-1 1/2 688 (700-1 1/2)			CIRCLING	980-1	639 (700-1)	980-2	1020-2 1/4	1140-2 3/4			639 (700-2)	679 (700-2 1/4)	799 (800-2 3/4)	IPEPE FIX MINIMUMS (DUAL VOR RECEIVERS OR RADAR REQUIRED)						S-LOC 27	720/24	428 (400-1/2)	720/40 428 (400-3/4)			CIRCLING	940-1	599 (600-1)	940-1 1/2	1020-2 1/4	1140-2 3/4			599 (600-1 1/2)	679 (700-2 1/4)	799 (800-2 3/4)
CATEGORY	A	B	C	D	E																																																											
S-ILS 27 *	492/24 200 (200-1/2)																																																															
S-LOC 27	980/24	688 (700-1/2)	980-1 1/2 688 (700-1 1/2)																																																													
CIRCLING	980-1	639 (700-1)	980-2	1020-2 1/4	1140-2 3/4																																																											
			639 (700-2)	679 (700-2 1/4)	799 (800-2 3/4)																																																											
IPEPE FIX MINIMUMS (DUAL VOR RECEIVERS OR RADAR REQUIRED)																																																																
S-LOC 27	720/24	428 (400-1/2)	720/40 428 (400-3/4)																																																													
CIRCLING	940-1	599 (600-1)	940-1 1/2	1020-2 1/4	1140-2 3/4																																																											
			599 (600-1 1/2)	679 (700-2 1/4)	799 (800-2 3/4)																																																											
HIRL all rwys TDZL/RCLS Rwys 18L, 18C, 18R, 36R, 36C, and 36L FAF to MAP 4.9 NM Knots 60 90 120 150 180 Min:Sec 4:54 3:16 2:27 1:58 1:38																																																																

SE-1, 11 JUN 2026 to 09 JUL 2026

SE-1, 11 JUN 2026 to 09 JUL 2026