

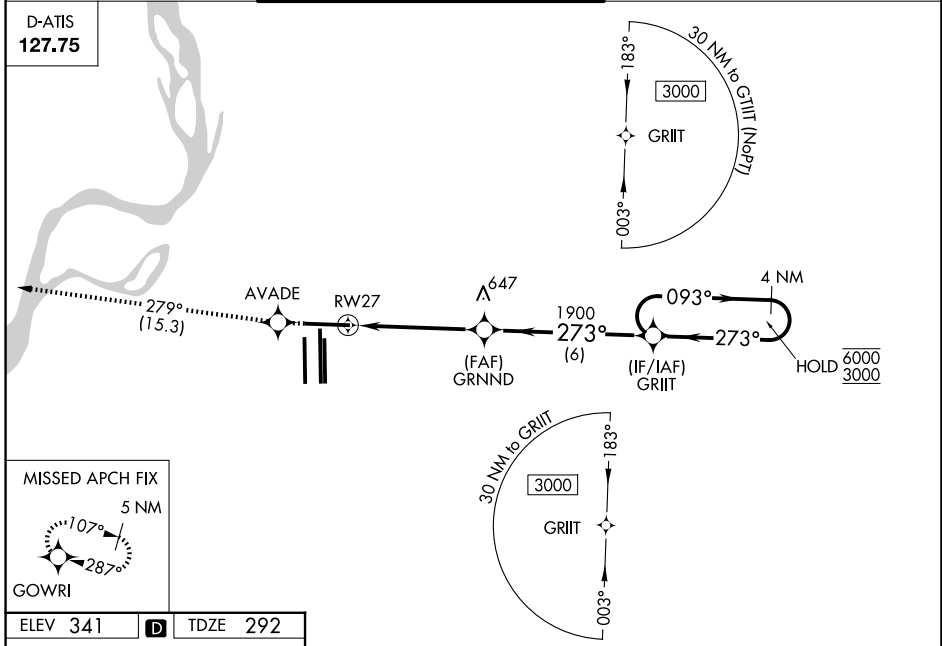
WAAS CH 93607 W27A	APP CRS 273°	Rwy Ldg TDZE Apt Elev	8946 292 341
--	------------------------	-----------------------------	---

RNAV (GPS) RWY 27

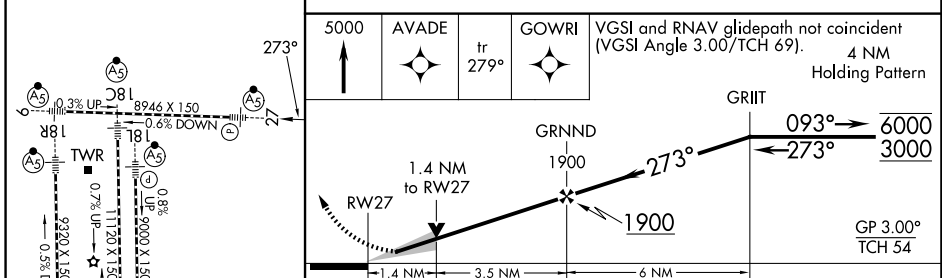
FREDERICK W SMITH INTL/MEMPHIS (MEM)

RNP APCH - GPS.	MALSR	MISSED APPROACH: Climb to 5000 direct AVADE and on track 279° to GOWRI and hold, continue climb-in-hold to 5000.
<p>▼ For uncompensated Baro-VNAV systems, LNAV/VNAV NA below -9°C or above 54°C. For inop ALS, increase LNAV Cat C and D visibility to 1½ SM.</p> <p>▲ *RVR 1800 authorized with use of FD or AP or HUD to DA.</p>		

MEMPHIS APP CON	MEMPHIS TOWER	GND CON
119.1 291.6 (176°-355°)	(Rwy 9-27) 118.3 257.8	(Rwy 9-27) 121.0 379.2
125.8 338.3 (356°-175°)	(Rwys 18C-36C, 18L-36R) 119.7 257.8	(Rwys 18C-36C, 18L-36R) 121.9 379.2
	(Rwy 18R-36L) 128.425 257.8	(Rwy 18R-36L) 121.65 379.2



ELEV 341	D	TDZE 292
----------	----------	----------



CATEGORY	A	B	C	D
LPV DA *	492/24		200 (200-½)	
LNAV/VNAV DA	745/50		453 (500-1)	
LNAV MDA	800/24 508 (500-½)		800/55 508 (500-1)	
CIRCLING	940-1 599 (600-1)		940-1½ 1020-2¼ 599 (600-1½) 679 (700-2¼)	

SE-1, 11 JUN 2026 to 09 JUL 2026

SE-1, 11 JUN 2026 to 09 JUL 2026