


# RNAV (RNP) X RWY 18L

FREDERICK W SMITH INTL/MEMPHIS (MEM)

APP CRS	Rwy Ldg	<b>9000</b>
<b>180°</b>	TDZE	<b>301</b>
	Apt Elev	<b>341</b>

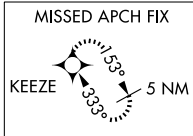
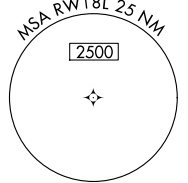
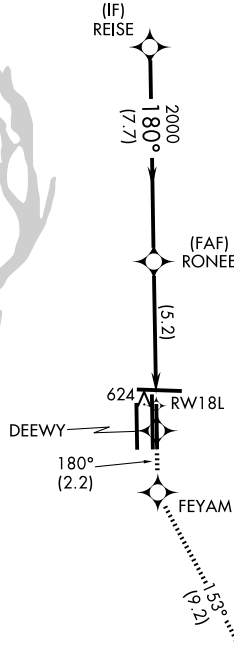
▼ For uncompensated Baro-VNAV systems, LNAV/VNAV NA below -9°C (16°F) or above 48°C (118 °F). Simultaneous approach authorized. GPS required. Missed approach requires RNP less than 1.0. For inop ALS increase RNP 0.11 all Cats visibility to RVR 6000.

**MALSR**  
  
**MISSED APPROACH:** Climb to 5000 on track 180° to DEEWY and on track 180° to FEYAM left turn on track 153° to KEEZE and hold, continue climb-in-hold to 5000.

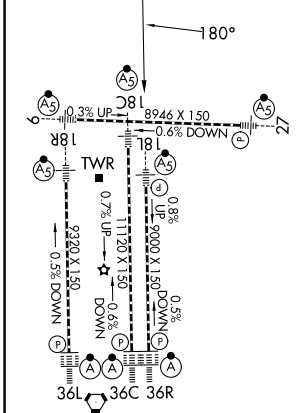
MEMPHIS APP CON	MEMPHIS TOWER	GND CON
<b>119.1 291.6</b> (176°-355°)	<b>118.3 257.8</b> (Rwy 9-27)	<b>121.0 379.2</b> (Rwy 9-27)
<b>125.8 338.3</b> (356°-175°)	<b>119.7 257.8</b> (Rwys 18C-36C, 18L-36R)	<b>121.9 379.2</b> (Rwys 18C-36C, 18L-36R)
	<b>128.425 257.8</b> (Rwy 18R-36L)	<b>121.65 379.2</b> (Rwy 18R-36L)

D-ATIS  
**127.75**

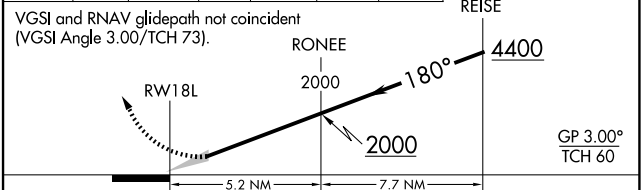
## RADAR REQUIRED



ELEV 341	<b>D</b>	TDZE 301
----------	----------	----------



5000	tr 180°	DEEWY	tr 180°	FEYAM	tr 153°	KEEZE
------	---------	-------	---------	-------	---------	-------



CATEGORY	A	B	C	D
RNP 0.11 DA	647/40 346 (400-¾)			

TDZL/RCLS Rwys 18L, 18C, 18R, 36R, 36C, and 36L  
HIRL all rwys

## AUTHORIZATION REQUIRED

SE-1, 11 JUN 2026 to 09 JUL 2026

SE-1, 11 JUN 2026 to 09 JUL 2026