


APP CRS **180°**
 Rwy Ldg **11120**
 TDZE **290**
 Apt Elev **341**

RNAV (RNP) Y RWY 18C

FREDERICK W SMITH INTL/MEMPHIS (MEM)

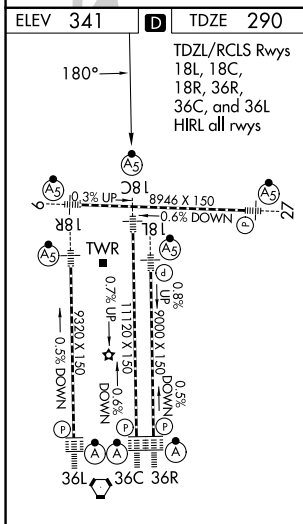
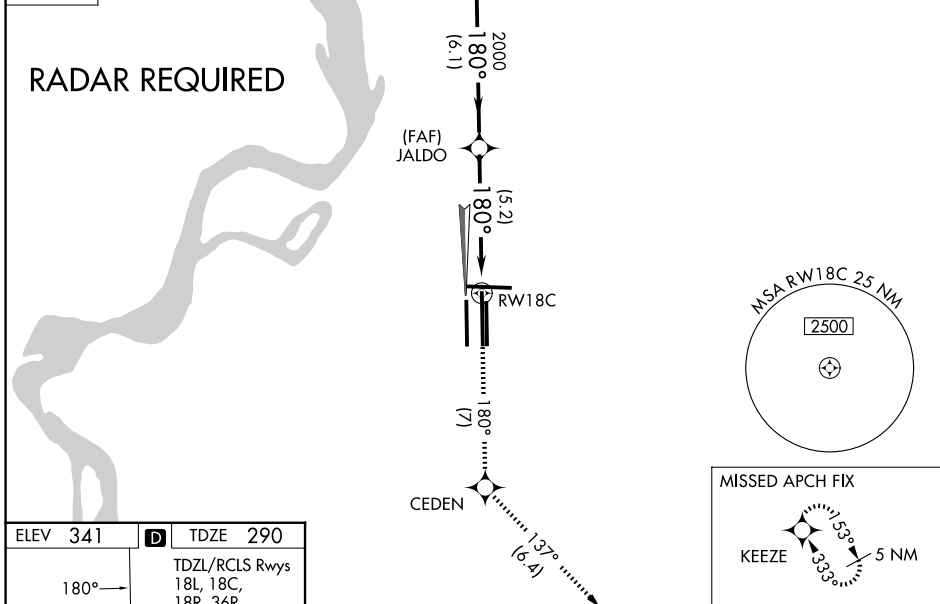
▼ For uncompensated Baro-VNAV systems, procedure NA below -10°C (14°F) or above 54°C (130°F). GPS required. For inop ALS, increase RNP 0.30* all Cats visibility to 1½ SM and RNP 0.30 all Cats visibility to 1½ SM. Simultaneous approach authorized. Use of FD or AP required during simultaneous operations.

MALSR 

MISSED APPROACH: Climb to 5000 on track 180° to CEDEN on track 137° to KEEZE and hold, continue climb-in-hold to 5000. *Missed approach requires a minimum climb of 400 feet per NM to 1000.

MEMPHIS APP CON	MEMPHIS TOWER	GND CON
119.1 291.6 (176°-355°)	(Rwy 9-27) 118.3 257.8	(Rwy 9-27) 121.0 379.2
125.8 338.3 (356°-175°)	(Rwys 18C-36C, 18L-36R) 119.7 257.8	(Rwys 18C-36C, 18L-36R) 121.9 379.2
	(Rwy 18R-36L) 128.425 257.8	(Rwy 18R-36L) 121.65 379.2

D-ATIS
127.75



ELEV 341	D	TDZE 290	TDZL/RCLS Rwys 18L, 18C, 18R, 36R, 36C, and 36L HIRL all rwys	
5000	tr 180°	CEDEN	tr 137°	KEEZE
		JALDO		LAURI
	RWY 18C	2000	180°	3900
			2000	
			5.2 NM	6.1 NM
CATEGORY	A	B	C	D
RNP 0.30 DA*	655/35 365 (400-5%)			
RNP 0.30 DA	747/54 457 (500-1)			

GP 3.00° TCH 54

AUTHORIZATION REQUIRED

SE-1, 11 JUN 2026 to 09 JUL 2026

SE-1, 11 JUN 2026 to 09 JUL 2026