


RNAV (RNP) Y RWY 18L

FREDERICK W SMITH INTL/MEMPHIS (MEM)

APP CRS	Rwy Ldg	9000
180°	TDZE	301
	Apt Elev	341

▼ For uncompensated Baro-VNAV systems, procedure NA below -9°C (16°F) or above 48°C (118 °F). GPS required. Simultaneous approach authorized. For inop ALS, increase RNP 0.30* all Cats visibility to RVR 6000 and RNP 0.30 all Cats visibility to 1¼ SM.

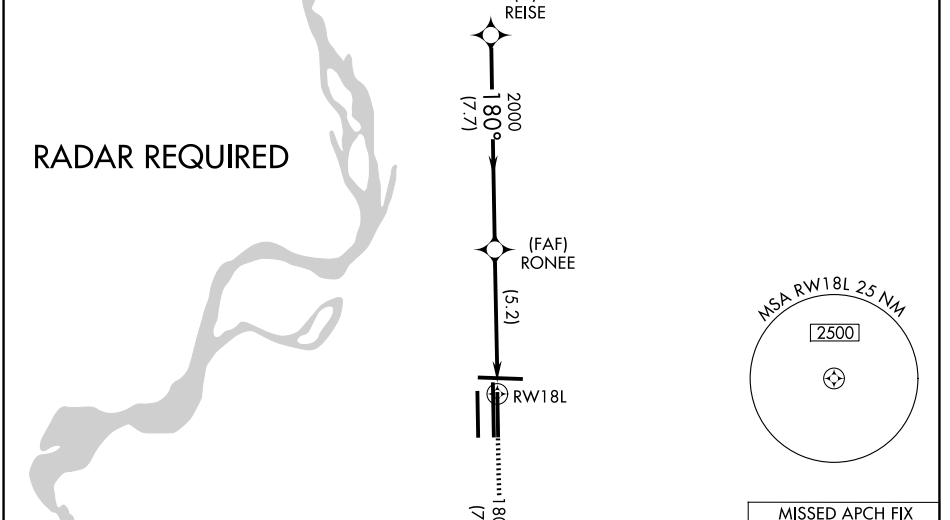
MALSRL



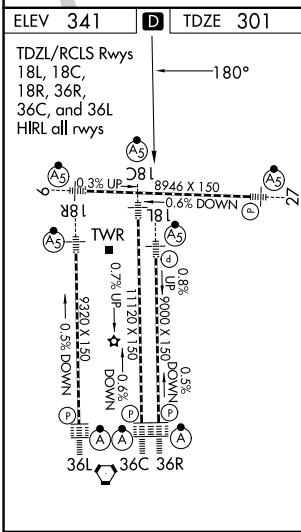
MISSED APPROACH: Climb to 5000 on track 180° to PENLE and on track 136° to KEEZE and hold, continue climb-in-hold to 5000. *Missed approach requires minimum climb of 400 feet per NM to 1000.

MEMPHIS APP CON	MEMPHIS TOWER	GND CON
119.1 291.6 (176°-355°)	118.3 257.8 (Rwy 9-27)	121.0 379.2 (Rwy 9-27)
125.8 338.3 (356°-175°)	119.7 257.8 (Rwys 18C-36C, 18L-36R)	121.9 379.2 (Rwys 18C-36C, 18L-36R)
	128.425 257.8 (Rwy 18R-36L)	121.65 379.2 (Rwy 18R-36L)

D-ATIS
127.75



RADAR REQUIRED



ELEV 341	D	TDZE 301			
TDZL/RCLS Rwys 18L, 18C, 18R, 36R, 36C, and 36L HIRL all rwys					
5000	tr 180°	PENLE	tr 136°	KEEZE	VGSI and RNAV glidepath not coincident (VGSI Angle 3.00/TCH 73).
				REISE 4400	
RWY 18L		RONEE		2000	GP 3.00° TCH 60
CATEGORY		A	B	C	D
RNP 0.30 DA*		698/50		397 (400-1)	
RNP 0.30 DA		791/60		490 (500-1¼)	

AUTHORIZATION REQUIRED

SE-1, 11 JUN 2026 to 09 JUL 2026

SE-1, 11 JUN 2026 to 09 JUL 2026