

APP CRS	Rwy Ldg	9320
180°	TDZE	295
	Apt Elev	341

RNAV (RNP) Y RWY 18R

FREDERICK W SMITH INTL/MEMPHIS (MEM)

▼ For uncompensated Baro-VNAV systems, procedure NA below -9°C (16°F) or above 48°C (118°F). Simultaneous approach authorized. GPS required. Use of FD or AP required during simultaneous operations. For inop ALS, increase RNP 0.19* all Cats visibility to RVR 6000 and RNP 0.30 all Cats visibility to 1 3/4 SM.

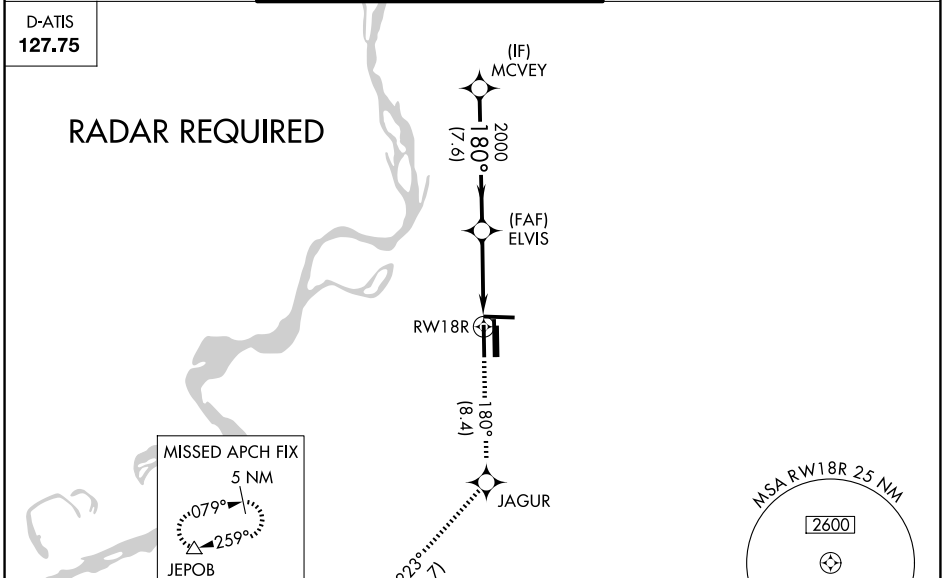
MALSR

MISSED APPROACH: Climb to 5000 on track 180° to JAGUR and on track 223° to JEPOB and hold. *Missed approach requires minimum climb of 425 feet per NM to 1000.

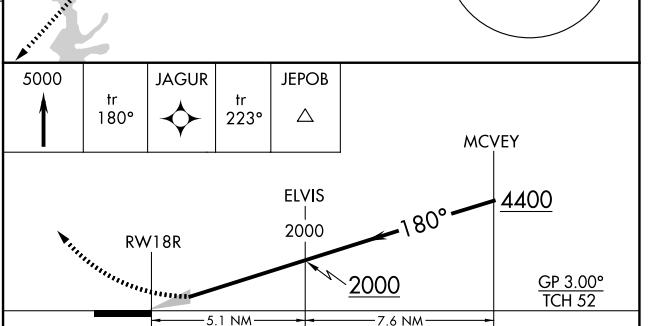
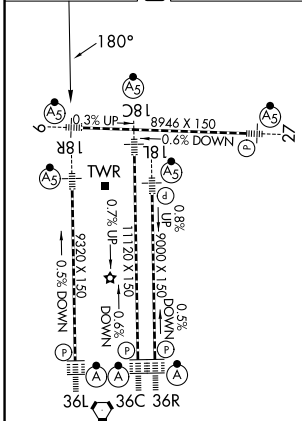
MEMPHIS APP CON	MEMPHIS TOWER	GND CON
119.1 291.6 (176°-355°)	(Rwy 9-27) 118.3 257.8	(Rwy 9-27) 121.0 379.2
125.8 338.3 (356°-175°)	(Rwys 18C-36C, 18L-36R) 119.7 257.8	(Rwys 18C-36C, 18L-36R) 121.9 379.2
	(Rwy 18R-36L) 128.425 257.8	(Rwy 18R-36L) 121.65 379.2

D-ATIS
127.75

RADAR REQUIRED



ELEV	341	D	TDZE	295
------	------------	----------	------	------------



CATEGORY	A	B	C	D
RNP 0.19 DA *		645/40	350 (400-3/4)	
RNP 0.30 DA		771/60	476 (500-1/4)	

TDZL/RCLS Rwys 18L, 18C, 18R, 36R, 36C, and 36L
HIRL all rwys

MEMPHIS, TENNESSEE
Orig-E 29MAR18

35°03'N-89°59'W

FREDERICK W SMITH INTL/MEMPHIS (MEM)
RNAV (RNP) Y RWY 18R

AUTHORIZATION REQUIRED

SE-1, 11 JUN 2026 to 09 JUL 2026

SE-1, 11 JUN 2026 to 09 JUL 2026