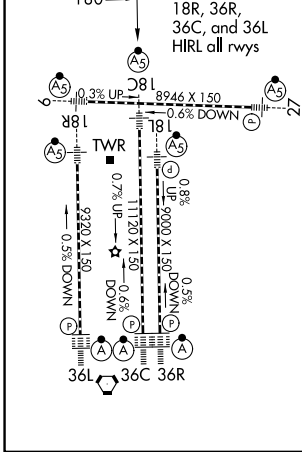
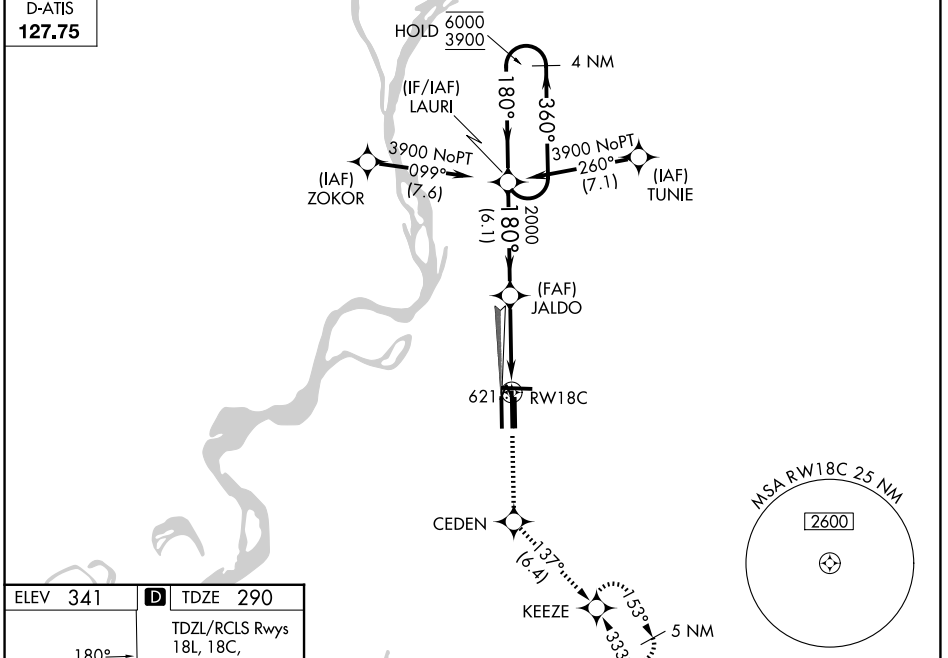


WAAS CH 97507	APP CRS 180°	Rwy Ldg TDZE Apt Elev	11120 290 341
W18D			

RNAV (GPS) Z RWY 18C

FREDERICK W SMITH INTL/MEMPHIS (MEM)

RNP APCH - GPS.		MALSIR	MISSED APPROACH: Climb to 5000 direct CEDEN and on track 137° to KEEZE and hold, continue climb-in-hold to 5000.
<p>Simultaneous approach authorized. For uncompensated Baro-VNAV systems, LNAV/VNAV NA below -15°C or above 54°C. Use of FD or AP required during simultaneous operations. LNAV procedure NA during simultaneous operations. For Inop ALS, increase LPV all Cats visibility to RVR 5500 and LNAV/VNAV all Cats visibility to 1½ SM.</p>			
MEMPHIS APP CON	MEMPHIS TOWER	GND CON	
119.1 291.6 (176°-355°)	(Rwy 9-27) 118.3 257.8	(Rwy 9-27) 121.0 379.2	
125.8 338.3 (356°-175°)	(Rwys 18C-36C, 18L-36R) 119.7 257.8	(Rwys 18C-36C, 18L-36R) 121.9 379.2	
	(Rwy 18R-36L) 128.425 257.8	(Rwy 18R-36L) 121.65 379.2	
D-ATIS			
127.75			



ELEV 341	D TDZE 290	TDZL/RCLS Rwys 18L, 18C, 18R, 36R, 36C, and 36L HIRL all rwys	
5000	CEDEN	tr 137°	KEEZE
RWY 18C		JALDO 2000	LAURI
1.7 NM to RWY 18C		1.7 NM	3.5 NM
180°		180°	360°
2000		2000	6000
1.7 NM		3.5 NM	6.1 NM
4 NM Holding Pattern		GP 3.00° TCH 54	
CATEGORY	A	B	C
LPV DA	665/35 375 (400-½)		
LNAV/VNAV DA	782/50 492 (500-1)		
LNAV MDA	880/24	590 (600-½)	880-1¼ 590 (600-1¼)
CIRCLING	940-1	599 (600-1)	940-1¾ 1020-2¼ 599 (600-1¾) 679 (700-2¼)

SE-1, 11 JUN 2026 to 09 JUL 2026

SE-1, 11 JUN 2026 to 09 JUL 2026