

(SELPH7.SELPH) 26078

AL-253 (FAA)

# SELPH SEVEN DEPARTURE (RNAV)

FREDERICK W SMITH INTL/MEMPHIS (MEM)  
MEMPHIS, TENNESSEE

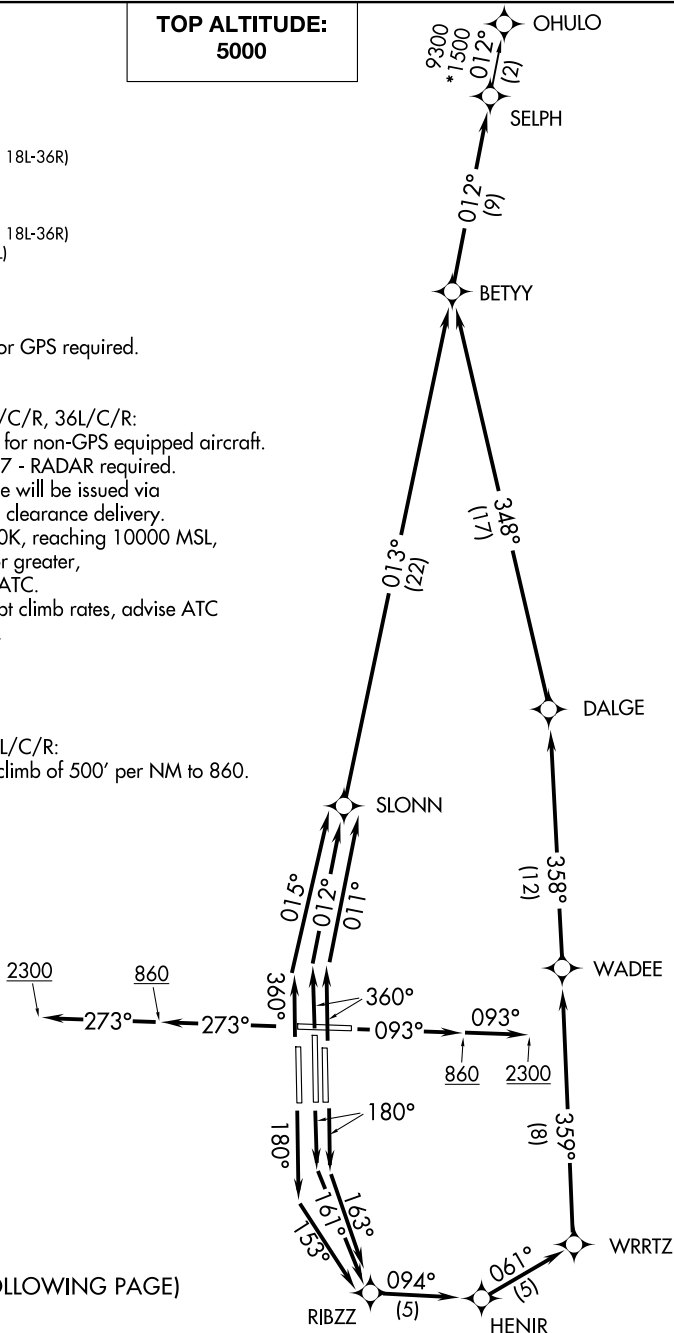
D-ATIS  
127.75  
CLINC DEL  
125.2  
CPDLC  
GND CON  
121.0 379.2 (Rwy 9-27)  
121.9 379.2 (Rwys 18C-36C, 18L-36R)  
121.65 379.2 (Rwy 18R-36L)  
MEMPHIS TOWER  
118.3 257.8 (Rwy 9-27)  
119.7 257.8 (Rwys 18C-36C, 18L-36R)  
128.425 257.8 (Rwy 18R-36L)  
MEMPHIS DEP CON  
124.15 385.45

**TOP ALTITUDE:  
5000**

- NOTE: DME/DME/IRU or GPS required.  
NOTE: RNAV 1.  
NOTE: Turbojets only.  
NOTE: Takeoff Rwy 18L/C/R, 36L/C/R:  
RADAR required for non-GPS equipped aircraft.  
NOTE: Takeoff Rwy 9, 27 - RADAR required.  
NOTE: Transponder code will be issued via  
PDC or Memphis clearance delivery.  
NOTE: Accelerate to 250K, reaching 10000 MSL,  
maintain 250K or greater,  
if unable advise ATC.  
NOTE: If unable to accept climb rates, advise ATC  
on initial contact.

### TAKEOFF MINIMUMS:

Rwy 9, 18L/C/R, 27, 36L/C/R:  
Standard with minimum climb of 500' per NM to 860.



(CONTINUED ON FOLLOWING PAGE)

NOTE: Chart not to scale.

# SELPH SEVEN DEPARTURE (RNAV)

(SELPH7.SELPH) 31DEC20

MEMPHIS, TENNESSEE  
FREDERICK W SMITH INTL/MEMPHIS (MEM)

SE-1, 11 JUN 2026 to 09 JUL 2026

SE-1, 11 JUN 2026 to 09 JUL 2026



DEPARTURE ROUTE DESCRIPTION

TAKEOFF RUNWAY 9: Climb on heading 093° to 860, then continue climb to 2300 on heading 093° or as assigned by ATC, for RADAR vectors to BETYY, then on depicted route to SELPH, thence . . .

TAKEOFF RUNWAY 18C: Climb on heading 180° to intercept course 161° to RIBZZ, then on depicted route to SELPH, thence . . .

TAKEOFF RUNWAY 18L: Climb on heading 180° to intercept course 163° to RIBZZ, then on depicted route to SELPH, thence . . .

TAKEOFF RUNWAY 18R: Climb on heading 180° to intercept course 153° to RIBZZ, then on depicted route to SELPH, thence . . .

TAKEOFF RUNWAY 27: Climb on heading 273° to 860, then continue climb to 2300 on heading 273° or as assigned by ATC, for RADAR vectors to BETYY, then on depicted route to SELPH, thence . . .

TAKEOFF RUNWAY 36C: Climb on heading 360° to intercept course 012° to SLONN, then on depicted route to SELPH, thence . . .

TAKEOFF RUNWAY 36L: Climb on heading 360° to intercept course 015° to SLONN, then on depicted route to SELPH, thence . . .

TAKEOFF RUNWAY 36R: Climb on heading 360° to intercept course 011° to SLONN, then on depicted route to SELPH, thence . . .

. . . maintain 5000. Expect clearance to filed altitude within ten (10) minutes after departure.

OHULO TRANSITION (SELPH7.OHULO)

SE-1, 11 JUN 2026 to 09 JUL 2026

SE-1, 11 JUN 2026 to 09 JUL 2026