


LOC/DME I-KKQ	APP CRS	Rwy Ldg	<b>9013</b>
<b>111.35</b>	<b>191°</b>	TDZE	<b>293</b>
Chan <b>50 (Y)</b>		Apt Elev	<b>298</b>

# ILS or LOC RWY 19

KEY FLD (MEI)

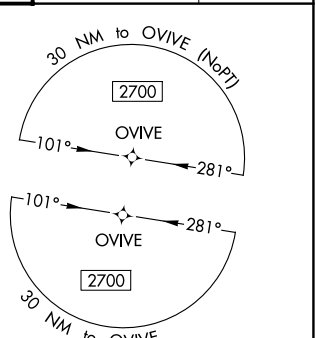
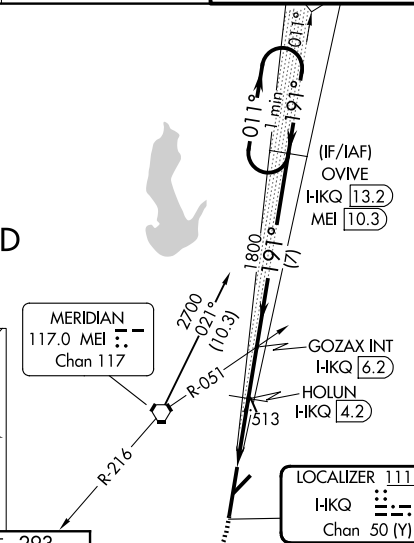
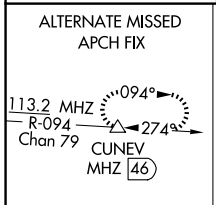
**⚠** When local altimeter not received, use Hattiesburg/Laurel Rgnl altimeter setting and increase all DA 138 feet and all MDA 140 feet, increase S-ILS 19 all Cats visibility to RVR 6000, S-LOC 19 Cats C, D, and E visibility to 2 miles, and Circling Cats A/D visibility ¼ mile and Cat C visibility ½ mile; increase HOLUN Fix minimums S-LOC Cats C, D and E to 1½ mile, and Circling Cat C visibility ½ mile, and Cat D visibility ¼ mile. For inop MALSRS, increase S-ILS 19 all Cats visibility to RVR 6000, and S-LOC 19 Cat E to 2 miles; increase HOLUN fix minimums S-LOC 19 Cat E visibility to 1½ mile. For inop MALSRS when using Hattiesburg/Laurel Rgnl altimeter setting, increase S-ILS 19 all Cats visibility to 1½ mile, and S-LOC 19 Cat E to 2½ miles; increase HOLUN Fix minimums S-LOC 19 Cat E visibility to 1¾ mile. Helicopter visibility reduction below RVR 4000 NA. Night landing: Rwy 22 NA. Circling NA southeast of Rwy 1 and 22. VDP NA when using Hattiesburg/Laurel Rgnl altimeter setting.

**MALSRS**

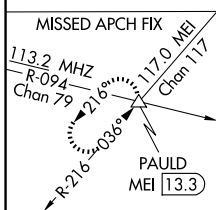


**MISSED APPROACH:**  
Climb to 1000 then climbing right turn to 3000 on heading 250° and MEI VORTAC R-216 to PAULD and MEI VORTAC INT/MEI 13.3 DME and hold.

ATIS	MERIDIAN APP CON*	KEY TOWER*	GND CON	UNICOM
<b>126.475 291.675</b>	<b>120.5 269.325</b>	<b>133.975 (CTAF) 0 257.8</b>	<b>121.9 348.6</b>	<b>122.95</b>

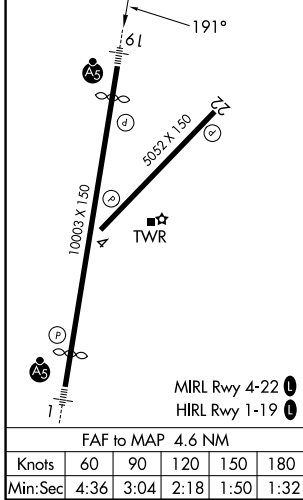


**DME REQUIRED**

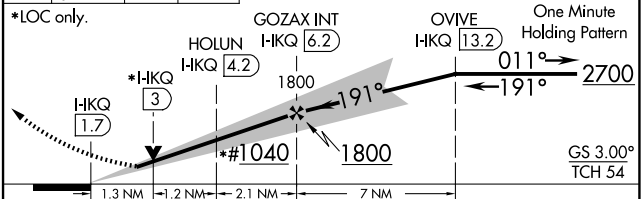


**GPS REQUIRED FOR TERMINAL ARRIVAL AREA**

ELEV 298	<b>D</b>	TDZE 293
----------	----------	----------



1000 3000 MEI R-216 PAULD VGSI and ILS glidepath not coincident (VGSI Angle 3.00/TCH 69). #1180 when using Hattiesburg/Laurel Rgnl altimeter setting.



CATEGORY	A	B	C	D	E
S-ILS 19	633/40 340 (400-¾)				
S-LOC 19	1040/40	747 (800-¾)	1040-1¾	747 (800-1¾)	
CIRCLING	1040-1	742 (800-1)	1040-1¼	742 (800-2¼)	1120-3
	742 (800-1)	742 (800-1¼)	742 (800-2¼)	822 (900-2¾)	822 (900-3)
	HOLUN FIX MINIMUMS				
S-LOC 19	780/40	487 (500-¾)	780/50	487 (500-1)	
CIRCLING	860-1	562 (600-1)	880-1	582 (600-1)	960-1¾
	562 (600-1)	582 (600-1)	662 (700-1¾)	822 (900-2¾)	822 (900-3)

SC-4, 11 JUN 2026 to 09 JUL 2026

SC-4, 11 JUN 2026 to 09 JUL 2026