

(ALTNN2.ALTNN) 25331

AL-256 (FAA)

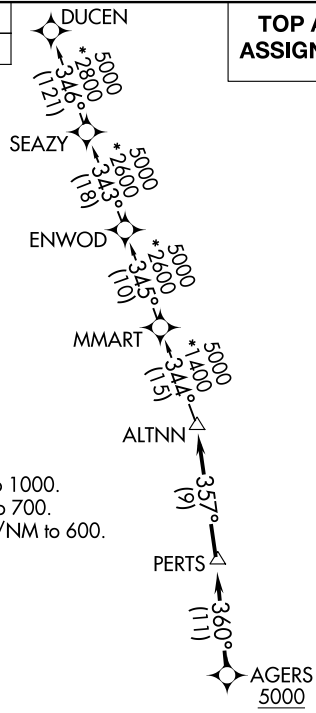
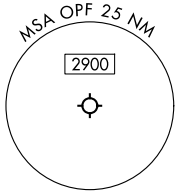
MIAMI-OPA LOCKA EXEC (OPF')  
MIAMI, FLORIDA

# ALTNN TWO DEPARTURE (RNAV)

MIAMI DEP CON  
126.85 290.325  
ATIS  
125.9  
CLNC DEL  
119.2  
GND CON  
120.025  
OPA LOCKA TOWER\*  
134.675 (CTAF)

RNAV 1 - DME/DME/IRU or GPS.  
RADAR required.

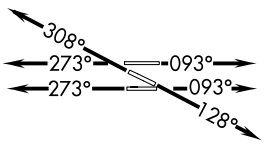
**TOP ALTITUDE:  
ASSIGNED BY ATC**



### TAKEOFF MINIMUMS

Rwy 9L: Standard with minimum climb of 500'/NM to 1000.  
Rwy 9R: Standard with minimum climb of 500'/NM to 700.  
Rwys 12, 27R: Standard with minimum climb of 500'/NM to 600.  
Rwys 27L, 30: Standard.

NOTE: Jet aircraft only.  
NOTE: Accelerate to 250K until leaving 10000, if unable, advise ATC.



NOTE: Chart not to scale.

### DEPARTURE ROUTE DESCRIPTION

- TAKEOFF RUNWAYS 9L/R:** Climb on heading 093° or as assigned by ATC for RADAR vectors to cross AGERS at or above 5000, thence. . . .
- TAKEOFF RUNWAY 12:** Climb on heading 128° or as assigned by ATC for RADAR vectors to cross AGERS at or above 5000, thence. . . .
- TAKEOFF RUNWAYS 27L/R:** Climb on heading 273° or as assigned by ATC for RADAR vectors to cross AGERS at or above 5000, thence. . . .
- TAKEOFF RUNWAY 30:** Climb on heading 308° or as assigned by ATC for RADAR vectors to cross AGERS at or above 5000, thence. . . .

. . . . on track 360° to PERTS, then on track 357° to ALTNN, then on assigned transition, maintain ATC assigned altitude. Expect filed altitude within 10 minutes after departure.

DUCEN TRANSITION (ALTNN2.DUCEN)

SE-3, 11 JUN 2026 to 09 JUL 2026

SE-3, 11 JUN 2026 to 09 JUL 2026

ALTNN TWO DEPARTURE (RNAV)  
(ALTNN2.ALTNN) 21MAR24

MIAMI, FLORIDA  
MIAMI-OPA LOCKA EXEC (OPF')