

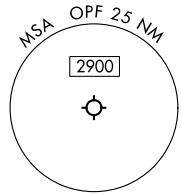
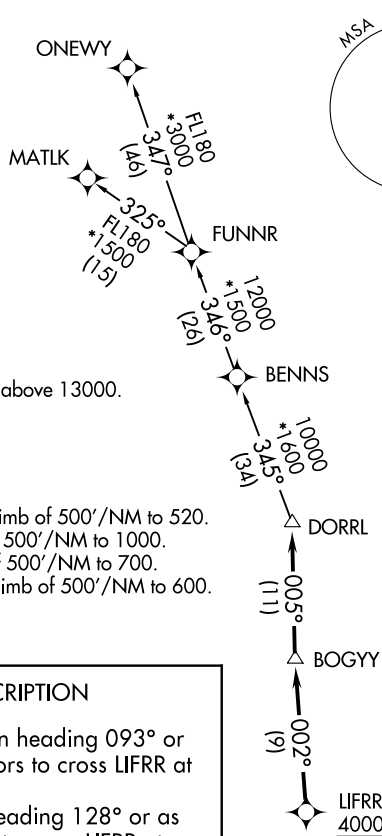
# DORRL TWO DEPARTURE (RNAV)

MIAMI, FLORIDA

MIAMI DEP CON  
 126.85 290.325  
 ATIS  
 125.9  
 CLNC DEL  
 119.2  
 GND CON  
 120.025  
 OPA LOCKA TOWER ★  
 134.675 (CTAF)

RNAV 1 - DME/DME/IRU or GPS.  
 RADAR required.

**TOP ALTITUDE:  
 ASSIGNED BY ATC**



NOTE: For turbo-props/props filed at or above 13000.

**TAKEOFF MINIMUMS**

- Rwys 27L, 30: Standard with minimum climb of 500'/NM to 520.
- Rwy 9L: Standard with minimum climb of 500'/NM to 1000.
- Rwy 9R: Standard with minimum climb of 500'/NM to 700.
- Rwys 12, 27R: Standard with minimum climb of 500'/NM to 600.

**DEPARTURE ROUTE DESCRIPTION**

**TAKEOFF RUNWAYS 9L/R:** Climb on heading 093° or as assigned by ATC for RADAR vectors to cross LIFRR at or above 4000, thence. . . .

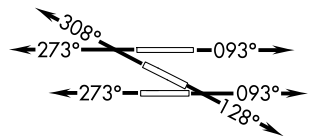
**TAKEOFF RUNWAY 12:** Climb on heading 128° or as assigned by ATC for RADAR vectors to cross LIFRR at or above 4000, thence. . . .

**TAKEOFF RUNWAYS 27L/R:** Climb on heading 273° or as assigned by ATC for RADAR vectors to cross LIFRR at or above 4000, thence. . . .

**TAKEOFF RUNWAY 30:** Climb on heading 308° or as assigned by ATC for RADAR vectors to cross LIFRR at or above 4000, thence. . . .

. . . on track 002° to BOGY, then on track 005° to DORRL then on (transition), maintain altitude as assigned by ATC, expect filed altitude 10 minutes after departure.

MATLK TRANSITION (DORRL2.MATLK)  
 ONEWY TRANSITION (DORRL2.ONEWY)



NOTE: Chart not to scale.

SE-3, 11 JUN 2026 to 09 JUL 2026

SE-3, 11 JUN 2026 to 09 JUL 2026