

(FLMGO2.FLMGO) 25331

AL-256 (FAA)

MIAMI-OPA LOCKA EXEC (OPF)

MIAMI, FLORIDA

# FLMGO TWO DEPARTURE(RNAV)

MIAMI DEP CON  
126.85 290.325  
ATIS  
125.9  
CLNC DEL  
119.2  
GND CON  
120.025  
OPA LOCKA TOWER ★  
134.675 (CTAF)

**TOP ALTITUDE:  
ASSIGNED BY ATC**

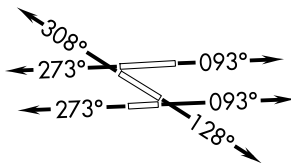
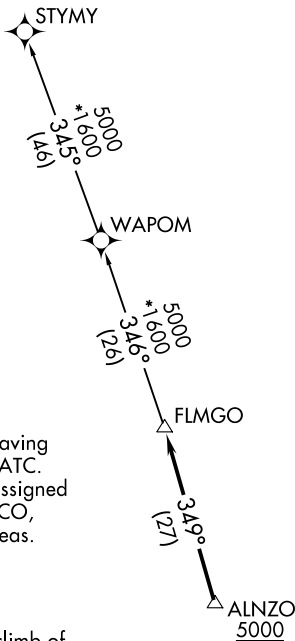
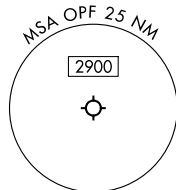
RNAV 1 - DME/DME/IRU or GPS.

RADAR required.

- NOTE: Jet aircraft only.  
NOTE: Accelerate to 250K until leaving 10000, if unable, advise ATC.  
NOTE: WAPOM Transition ATC assigned except aircraft landing: MCO, DAB, and MLB terminal areas.

### TAKEOFF MINIMUMS

- Rwy 9L: Standard with minimum climb of 500'/NM to 1000.  
Rwy 9R: Standard with minimum climb of 500'/NM to 700.  
Rwys 12, 27R: Standard with minimum climb of 500'/NM to 600.  
Rwys 27L, 30: Standard.



NOTE: Chart not to scale.

## DEPARTURE ROUTE DESCRIPTION

- TAKEOFF RUNWAYS 9L/R: Climb on heading 093° or as assigned by ATC for RADAR vectors to cross ALNZO at or above 5000, thence. . . .  
TAKEOFF RUNWAY 12: Climb on heading 128° or as assigned by ATC for RADAR vectors to cross ALNZO at or above 5000, thence. . . .  
TAKEOFF RUNWAYS 27L/R: Climb on heading 273° or as assigned by ATC for RADAR vectors to cross ALNZO at or above 5000, thence. . . .  
TAKEOFF RUNWAY 30: Climb on heading 308° or as assigned by ATC for RADAR vectors to cross ALNZO at or above 5000, thence. . . .

. . . on track 349° to FLMGO, then on assigned transition. Maintain ATC assigned altitude. Expect filed altitude within 10 minutes after departure.

- STYMY TRANSITION (FLMGO2.STYMY)  
WAPOM TRANSITION (FLMGO2.WAPOM)

FLMGO TWO DEPARTURE(RNAV)  
(FLMGO2.FLMGO) 21MAR24

MIAMI, FLORIDA  
MIAMI-OPA LOCKA EXEC (OPF)

SE-3, 11 JUN 2026 to 09 JUL 2026

SE-3, 11 JUN 2026 to 09 JUL 2026