

(HURCN4.HURCN) 25331

AL-256 (FAA)

MIAMI-OPA LOCKA EXEC (OPF)  
MIAMI, FLORIDA

# HURCN FOUR DEPARTURE(RNAV)

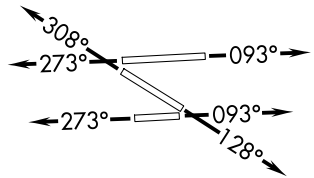
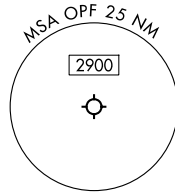
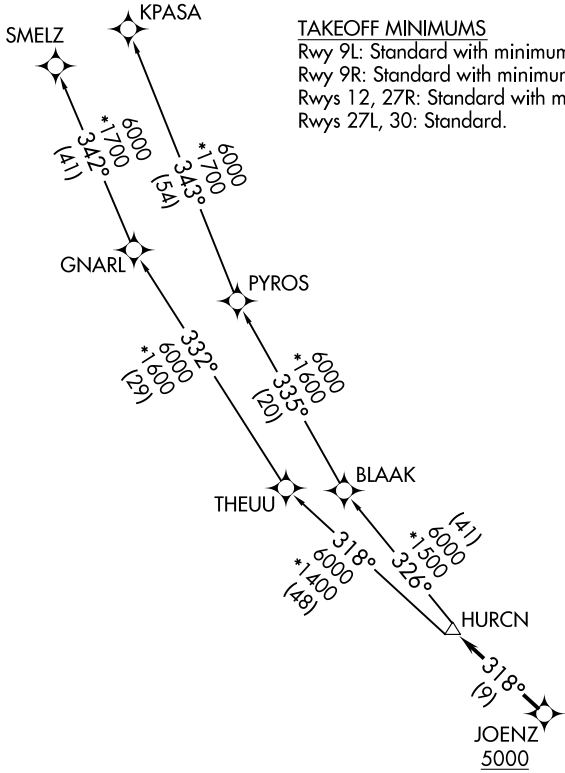
MIAMI DEP CON  
126.85 290.325  
ATIS  
125.9  
CLNC DEL  
119.2  
GND CON  
120.025  
OPA LOCKA TOWER★  
134.675 (CTAF)

RNAV-1 DME/DME/IRU or GPS.
RADAR required.

**TOP ALTITUDE:  
ASSIGNED BY ATC**

### TAKEOFF MINIMUMS

Rwy 9L: Standard with minimum climb of 500'/NM to 1000.  
Rwy 9R: Standard with minimum climb of 500'/NM to 700.  
Rwys 12, 27R: Standard with minimum climb of 500'/NM to 600.  
Rwys 27L, 30: Standard.



NOTE: Jet aircraft only.  
NOTE: Accelerate to 250K until leaving 10000,  
if unable, advise ATC.

NOTE: Chart not to scale.

(CONTINUED ON FOLLOWING PAGE)

HURCN FOUR DEPARTURE(RNAV)  
(HURCN4.HURCN) 21MAR24

MIAMI, FLORIDA  
MIAMI-OPA LOCKA EXEC (OPF)

SE-3, 11 JUN 2026 to 09 JUL 2026

SE-3, 11 JUN 2026 to 09 JUL 2026

# HURCN FOUR DEPARTURE (RNAV)



## DEPARTURE ROUTE DESCRIPTION

TAKEOFF RUNWAYS 9L/R: Climb on heading 093° or as assigned by ATC for RADAR vectors to cross JOENZ at or above 5000, thence. . .

TAKEOFF RUNWAY 12: Climb on heading 128° or as assigned by ATC for RADAR vectors to cross JOENZ at or above 5000, thence. . .

TAKEOFF RUNWAYS 27L/R: Climb on heading 273° or as assigned by ATC for RADAR vectors to cross JOENZ at or above 5000, thence. . .

TAKEOFF RUNWAY 30: Climb on heading 308° or as assigned by ATC for RADAR vectors to cross JOENZ at or above 5000, thence. . .

. . .on track 318° to HURCN, then on transition. Maintain ATC assigned altitude. Expect clearance to filed altitude within 10 minutes after departure.

KPASA TRANSITION (HURCN4.KPASA)

SMELZ TRANSITION (HURCN4.SMELZ)

SE-3, 11 JUN 2026 to 09 JUL 2026

SE-3, 11 JUN 2026 to 09 JUL 2026