

LOC/DME I-PLJ 111.35 Chan 50(Y)	APP CRS 273°	Rwy Ldg TDZE Apt Elev	8002 8 8
---	------------------------	-----------------------------	-------------------------------------

ILS or LOC RWY 27R

MIAMI-OPA LOCKA EXEC (OPF)

⚠ DME required. When local altimeter setting not received, use Miami Intl altimeter setting and increase all DA/MDA 20 feet and Circling Cat D visibility ¼ SM. For inop ALS, increase S-ILS 27R all Cats visibility to ¾ SM and S-LOC 27R Cats C/D visibility to 1½ SM. Rwy 27R helicopter visibility reduction below ¾ SM NA. Autopilot coupled approach NA below 700 feet.

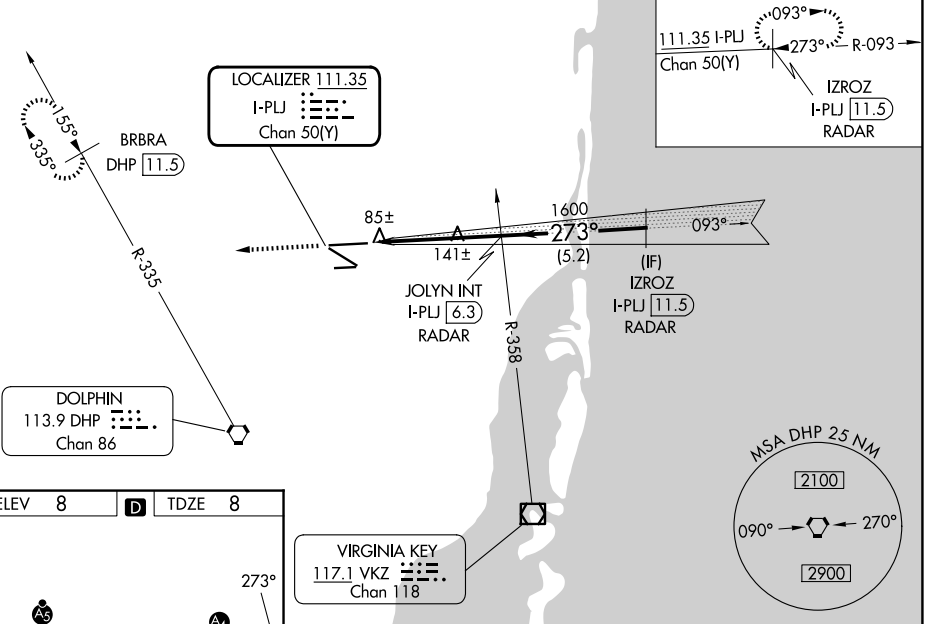
MALS

MISSED APPROACH: Climb to 2000 heading 273° and DHP VORTAC R-335 to BRBRA/DHP 11.5 DME and hold.

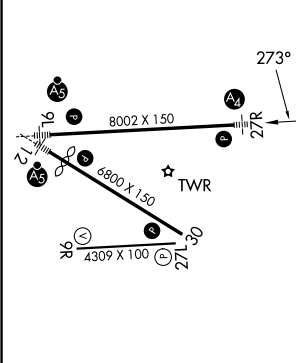
ATIS 125.9	MIAMI APP CON 128.6 306.975	OPA LOCKA TOWER ★ 134.675 (CTAF) 0	GND CON 120.025	CLNC DEL 119.2	GCO 119.45
----------------------	---------------------------------------	---	---------------------------	--------------------------	----------------------

RADAR REQUIRED

ALTERNATE MISSED APCH FIX



ELEV 8	D	TDZE 8
---------------	----------	---------------



MIRL Rwy 9R-27L HIRL Rwys 9L-27R and 12-30					
FAF to MAP 4.8 NM					
Knots	60	90	120	150	180
Min:Sec	4:48	3:12	2:24	1:55	1:36

2000	DHP R-335	BRBRA DHP 11.5	JOLYN INT I-PLJ 6.3 RADAR	IZROZ INT I-PLJ 11.5																				
<table border="1"> <tr> <td>CATEGORY</td> <td>A</td> <td>B</td> <td>C</td> <td>D</td> </tr> <tr> <td>S-ILS 27R</td> <td colspan="4">291-¾ 283 (300-¾)</td> </tr> <tr> <td>S-LOC 27R</td> <td>420-¾</td> <td>412 (500-¾)</td> <td>420-1</td> <td>412 (500-1)</td> </tr> <tr> <td>CIRCLING</td> <td>540-1</td> <td>532 (600-1)</td> <td>620-1¾ 612 (700-1¾)</td> <td>740-2¼ 732 (800-2¼)</td> </tr> </table>					CATEGORY	A	B	C	D	S-ILS 27R	291-¾ 283 (300-¾)				S-LOC 27R	420-¾	412 (500-¾)	420-1	412 (500-1)	CIRCLING	540-1	532 (600-1)	620-1¾ 612 (700-1¾)	740-2¼ 732 (800-2¼)
CATEGORY	A	B	C	D																				
S-ILS 27R	291-¾ 283 (300-¾)																							
S-LOC 27R	420-¾	412 (500-¾)	420-1	412 (500-1)																				
CIRCLING	540-1	532 (600-1)	620-1¾ 612 (700-1¾)	740-2¼ 732 (800-2¼)																				

SE-3, 11 JUN 2026 to 09 JUL 2026

SE-3, 11 JUN 2026 to 09 JUL 2026