

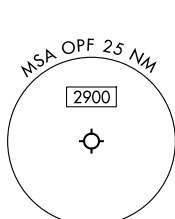
MIAMI TWO DEPARTURE
(MIA2.MIA) 26DEC24

MIAMI, FLORIDA
MIAMI-OPA LOCKA EXEC (OPT)
(MIA2.MIA) 26DEC24

TOP ALTITUDE: AS ASSIGNED BY ATC

RADAR and DME required.

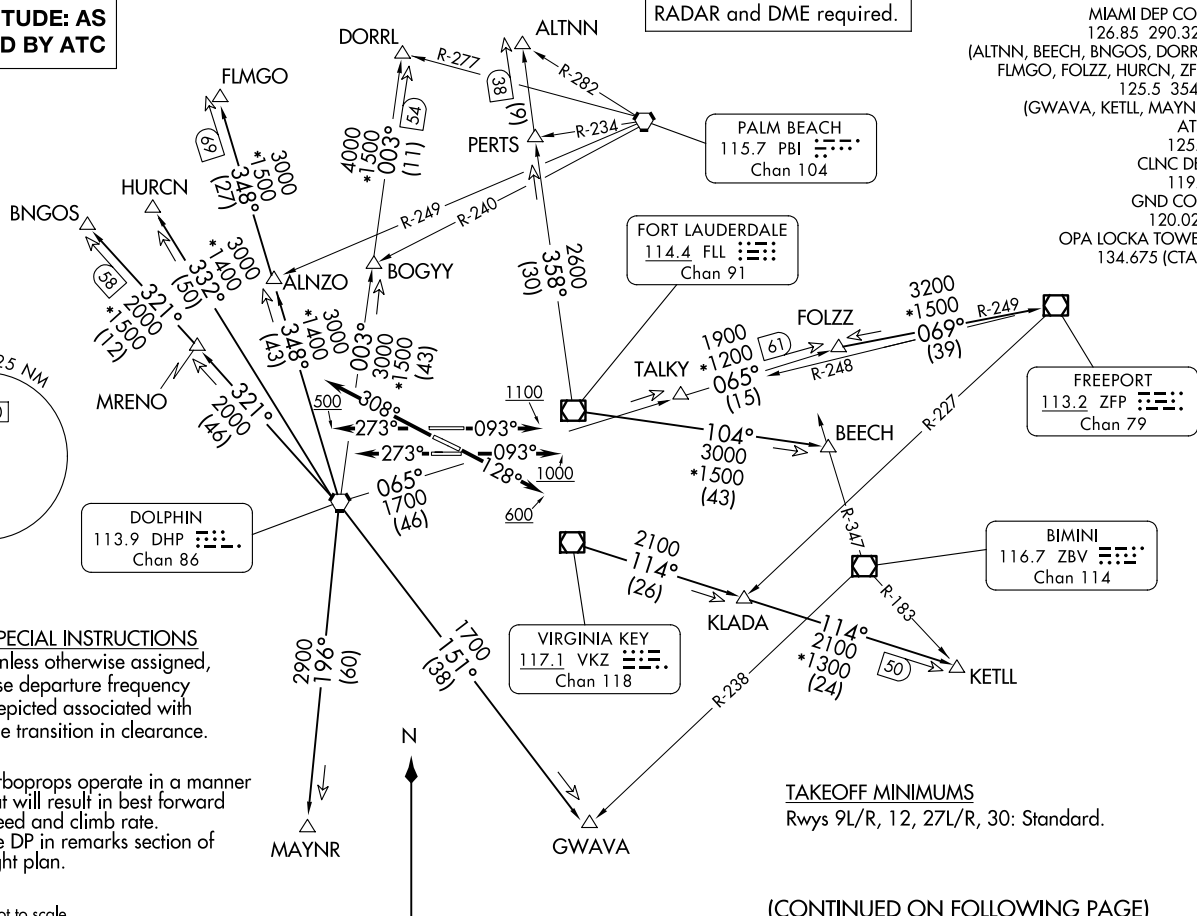
MIAMI DEP CON
126.85 290.325
(ALTNN, BEECH, BNGOS, DORRL,
FLMGO, FOLZZ, HURCN, ZFP)
125.5 354.1
(GWAVA, KETLL, MAYNR)
ATIS
125.9
CLNC DEL
119.2
GND CON
120.025
OPA LOCKA TOWER ★
134.675 (CTAF)



SPECIAL INSTRUCTIONS
Unless otherwise assigned,
use departure frequency
depicted associated with
the transition in clearance.

NOTE: Turboprops operate in a manner
that will result in best forward
speed and climb rate.
NOTE: File DP in remarks section of
flight plan.

NOTE: Chart not to scale.



TAKEOFF MINIMUMS
Rwys 9L/R, 12, 27L/R, 30: Standard.

(CONTINUED ON FOLLOWING PAGE)

MIAMI TWO DEPARTURE
(MIA2.MIA) 26331

MIAMI-OPA LOCKA EXEC (OPT)
MIAMI, FLORIDA
AL-256 (FAA)

MIAMI TWO DEPARTURE



DEPARTURE ROUTE DESCRIPTION

TAKEOFF RUNWAY 9L: Climb on heading 093° to 1100 before turning north, thence...

TAKEOFF RUNWAY 9R: Climb on heading 093° to 1000 before turning north, thence...

TAKEOFF RUNWAY 12: Climb on heading 128° to 600 before turning north, thence...

TAKEOFF RUNWAY 27L: Climb on heading 273° thence...

TAKEOFF RUNWAY 27R: Climb on heading 273° to 500 before turning north, thence...

TAKEOFF RUNWAY 30: Climb on heading 308° thence...

... on transition, maintain ATC assigned altitude. Expect filed altitude 10 minutes after departure.

ALTNN TRANSITION (MIA2.ALTNN): From over FLL VOR/DME on FLL R-358 to ALTNN.

BEECH TRANSITION (MIA2.BEECH): From over FLL VOR/DME on FLL R-104 to BEECH.

BNGOS TRANSITION (MIA2.BNGOS): From over DHP VORTAC on DHP R-321 to BNGOS.

DORRL TRANSITION (MIA2.DORRL): From over DHP VORTAC on DHP R-003 to DORRL.

FLMGO TRANSITION (MIA2.FLMGO): From over DHP VORTAC on DHP R-348 to FLMGO.

FOLZZ TRANSITION (MIA2.FOLZZ): From over DHP VORTAC on DHP R-065 to FOLZZ.

FREEPORT TRANSITION (MIA2.ZFP): From over DHP VORTAC on DHP R-065 to FOLZZ then on ZFP R-249 to ZFP VOR/DME.

GWAVA TRANSITION (MIA2.GWAVA): From over DHP VORTAC on DHP R-151 to GWAVA.

HURCN TRANSITION (MIA2.HURCN): From over DHP VORTAC on DHP R-332 to HURCN.

KETLL TRANSITION (MIA2.KETLL): From over VKZ VOR/DME on VKZ R-114 to KETLL.

MAYNR TRANSITION (MIA2.MAYNR): From over DHP VORTAC on DHP R-196 to MAYNR.

SE-3, 11 JUN 2026 to 09 JUL 2026

SE-3, 11 JUN 2026 to 09 JUL 2026