

WAAS CH 69522 W12A	APP CRS 128°	Rwy Ldg TDZE Apt Elev	6000 8 8
--	------------------------	-----------------------------	-------------------------------------

RNAV (GPS) RWY 12

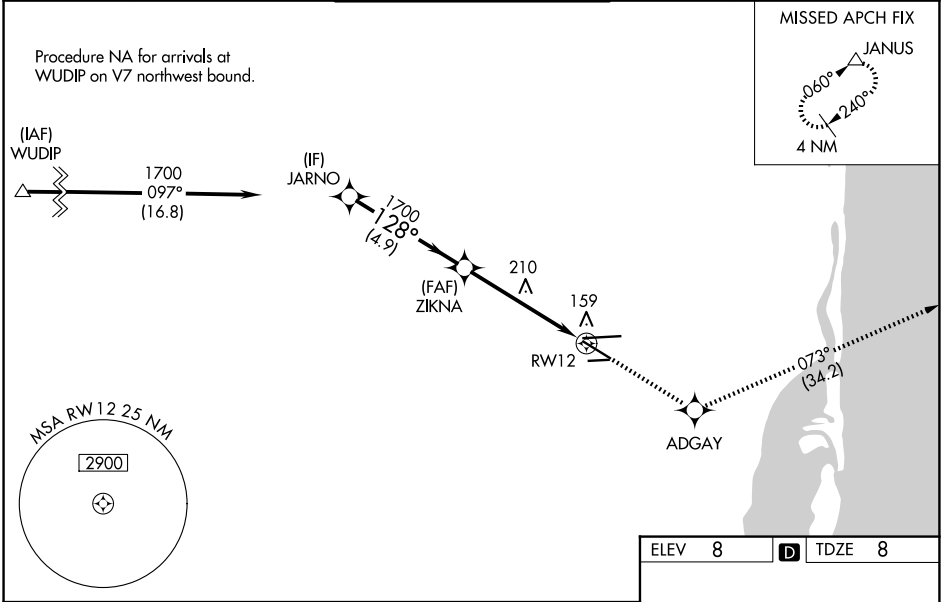
MIAMI-OPA LOCKA EXEC (OPF)

▼ Baro-VNAV NA when using Miami Intl altimeter setting. For uncompensated Baro-VNAV systems, LNAV/VNAV NA below -1.5°C (5°F) or above 43°C (109°F). Helicopter visibility reduction below 3/4 SM NA. DME/DME RNP-0.3 NA. VDP NA with Miami Intl altimeter setting. When local altimeter setting not received, use Miami Intl altimeter setting and increase all DA/MDA 20 feet and Circling Cat D visibility 1/4 SM. Inop table does not apply. For inop MALSR, increase LNAV/VNAV all Cats visibility and LNAV Cats A and B to 1 mile and LNAV Cats C and D visibility to 1 1/8 miles. For inop MALSR, when using Miami Intl altimeter setting, increase LNAV/VNAV all Cats visibility and LNAV Cats A and B visibility to 1 mile.

MALSR

MISSED APPROACH:
Climb to 2000 direct ADGAY and on track 073° to JANUS and hold.

ATIS 125.9	MIAMI APP CON 128.6 306.975	OPA LOCKA TOWER ★ 134.675 (CTAF)	GND CON 120.025	CLNC DEL 119.2	GCO 119.45
----------------------	---------------------------------------	--	---------------------------	--------------------------	----------------------



	JARNO	ZIKNA	ADGAY	JANUS
	1700	1700	2000	tr 073°
	GP 3.00° TCH 53	*1.5 NM to RWY 12		*LNAV only.
	4.9 NM	3.7 NM	1.5 NM	
CATEGORY	A	B	C	D
LPV DA		208-3/4	200 (200-3/4)	
LNAV/VNAV DA		320-3/4	312 (400-3/4)	
LNAV MDA	520-3/4	512 (600-3/4)	520-1	512 (600-1)
CIRCLING	540-1	532 (600-1)	620-1 3/4 612 (700-1 3/4)	740-2 1/4 732 (800-2 1/4)

ELEV 8	TDZE 8
--------	--------

MIRL Rwy 9R-27L
HIRL Rwys 9L-27R and 12-30

SE-3, 11 JUN 2026 to 09 JUL 2026

SE-3, 11 JUN 2026 to 09 JUL 2026