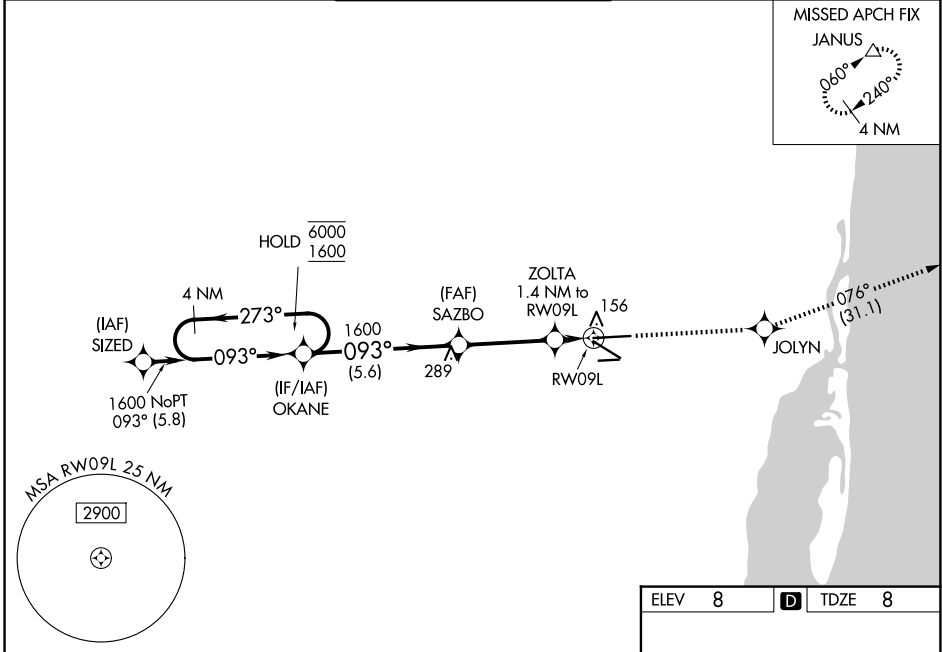
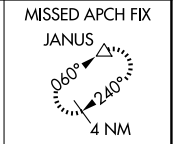


WAAS CH 53422 W09A	APP CRS 093°	Rwy Ldg TDZE Apt Elev	8002 8 8
--	------------------------	-----------------------------	-------------------------------------

RNAV (GPS) RWY 9L

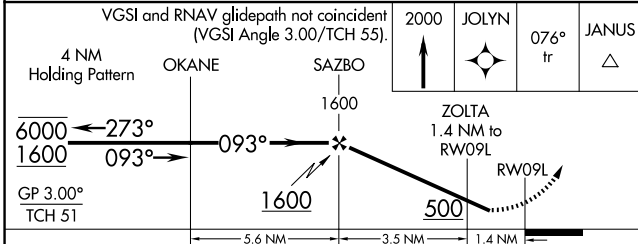
MIAMI-OPA LOCKA EXEC (OPF)

RNP APCH - GPS.		MALSR		MISSED APPROACH: Climb to 2000 direct JOLYN and on 076° track to JANUS and hold.	
<p>▼ For uncompensated Baro-VNAV systems, LNAV/VNAV NA below 8°C or above 54°C. Rwy 9L helicopter visibility reduction below 3/4 SM NA. Inop table does not apply to LPV all Cats. For inop ALS, increase LNAV/VNAV all Cats and LNAV Cats A and B visibility to 1 SM, and LNAV Cats C and D visibility to 1 1/8 SM. Caution: Lights on highway 0.7 NM north may be mistaken for runway.</p>					
ATIS 125.9	MIAMI APP CON 128.6 306.975	OPA LOCKA TOWER ★ 134.675 (CTAF)	GND CON 120.025	CLNC DEL 119.2	GCO 119.45

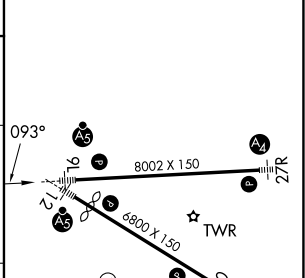


SE-3, 11 JUN 2026 to 09 JUL 2026

SE-3, 11 JUN 2026 to 09 JUL 2026



ELEV	8	TDZE	8
------	---	------	---



CATEGORY	A	B	C	D
LPV DA		258-3/4	250 (300-3/4)	
LNAV/VNAV DA		337-3/4	329 (400-3/4)	
LNAV MDA		420-3/4	412 (500-3/4)	
CIRCLING	480-1 472 (500-1)	520-1 512 (600-1)	620-1 1/4 612 (700-1 1/4)	740-2 1/4 732 (800-2 1/4)

MIRL Rwy 9R-27L
HIRL Rwys 9L-27R and 12-30