

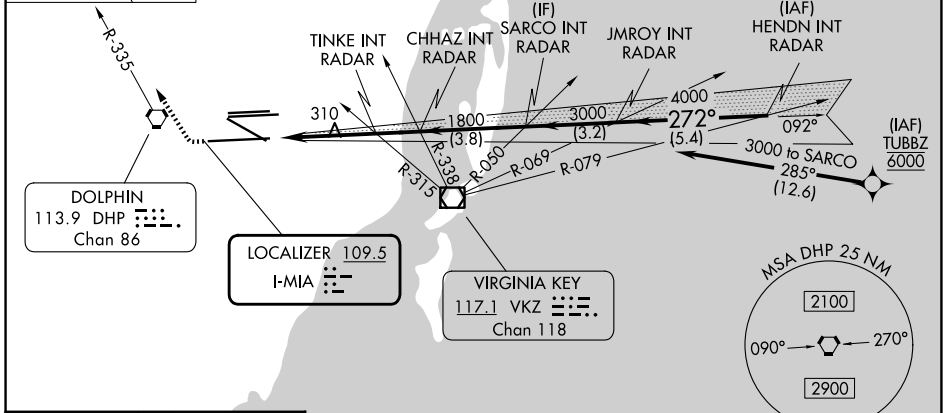
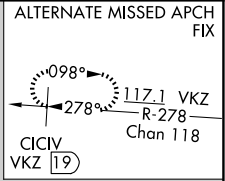
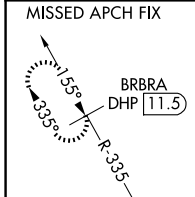
LOC I-MIA 109.5	APP CRS 272°	Rwy Ldg 12755 TDZE 9 Apt Elev 9
---------------------------	------------------------	--

ILS or LOC RWY 27

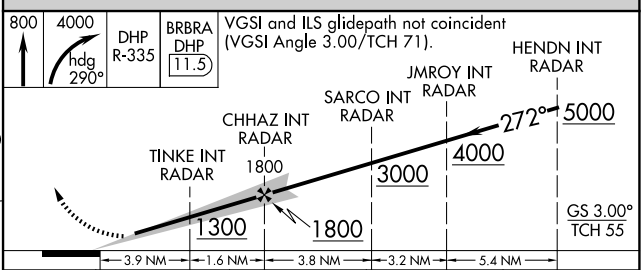
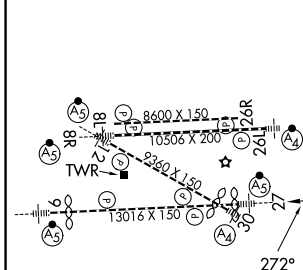
MIAMI INTL (MIA)

DME required. RNP APCH-GPS. From TUBBZ.		MALSR 	MISSED APPROACH: Climb to 800 then climbing right turn to 4000 on heading 290° and DHP VORTAC R-335 to BRBRA/DHP 11.5 DME and hold, continue climb-in-hold to 4000.
	Simultaneous approach authorized. Inp table does not apply to S-LOC 27 Cats C/D. * RVR 1800 authorized with use of FD or AP or HUD to DA.		

D-ATIS 119.15	MIAMI APP CON 124.85 322.3	MIAMI TOWER 118.3 256.9	GND CON 121.8 (8L/8R/12/26L/26R) 127.5 (9/27/30) 348.6
-------------------------	--------------------------------------	-----------------------------------	---



ELEV 9	D	TDZE 9
--------	----------	--------



TDZ/CL Rwy 8R REIL Rwy 8L and 26R HIRL all Rwy	FAF to MAP 5.5 NM				
Knots	60	90	120	150	180
Min:Sec	5:30	3:40	2:45	2:12	1:50
S-ILS 27 *	209/24 200 (200-½)				
S-LOC 27	1300/40 1291 (1300-¾)	1300/55 1291 (1300-1)	1300-3	1291 (1300-3)	
TINKE FIX MINIMUMS (DUAL VOR RECEIVERS OR RADAR REQUIRED)					
S-LOC 27	560/24 551 (600-½)		560/60 551 (600-¼)		

SE-3, 11 JUN 2026 to 09 JUL 2026

SE-3, 11 JUN 2026 to 09 JUL 2026