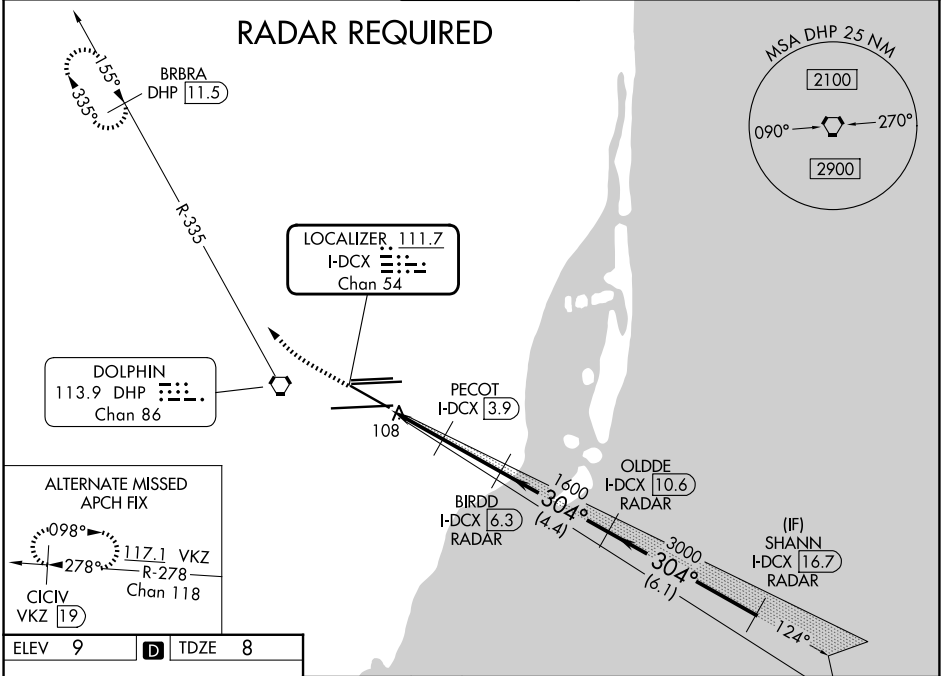


LOC/DME I-DCX <b>111.7</b> Chan <b>54</b>	APP CRS <b>304°</b>	Rwy Ldg TDZE <b>7913</b> <b>8</b> Apt Elev <b>9</b>
---	------------------------	---

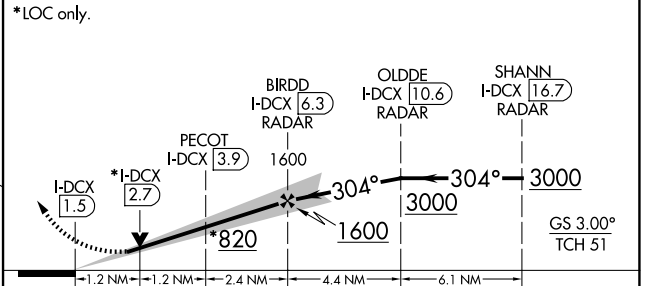
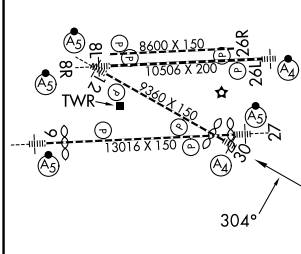
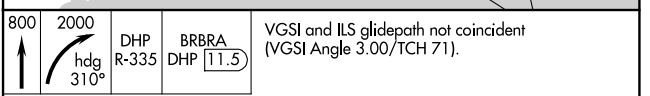
# ILS or LOC RWY 30

MIAMI INTL (MIA)

<p><b>▼</b> DME required. Inop table does not apply.</p>		<p>MALS </p>	<p>MISSED APPROACH: Climb to 800 then climbing right turn to 2000 on heading 310° and DHP VORTAC R-335 to BRBRA/11.5 DME and hold.</p>
D-ATIS <b>119.15</b>	MIAMI APP CON <b>124.85 322.3</b>	MIAMI TOWER <b>118.3 256.9</b>	GND CON <b>121.8</b> (8L/8R/12/26L/26R) <b>348.6</b> <b>127.5</b> (9/27/30)



ELEV 9	<b>D</b>	TDZE 8
--------	----------	--------



TDZ/CL Rwy 8R  
REL Rwy 8L and 26R  
HIRL all Rwys

FAF to MAP 4.8 NM

Knots	60	90	120	150	180
Min:Sec	4:48	3:12	2:24	1:55	1:36

CATEGORY	A	B	C	D
S-ILS 30	258/40 250 (300-¾)			
S-LOC 30	460/40	452 (500-¾)	460/60	460-1½
			452 (500-1¼)	452 (500-1½)

SE-3, 11 JUN 2026 to 09 JUL 2026

SE-3, 11 JUN 2026 to 09 JUL 2026