

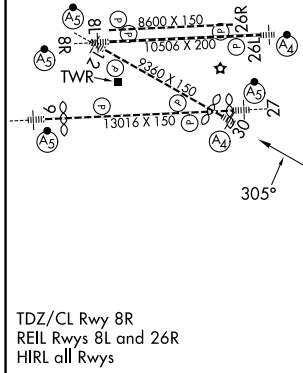
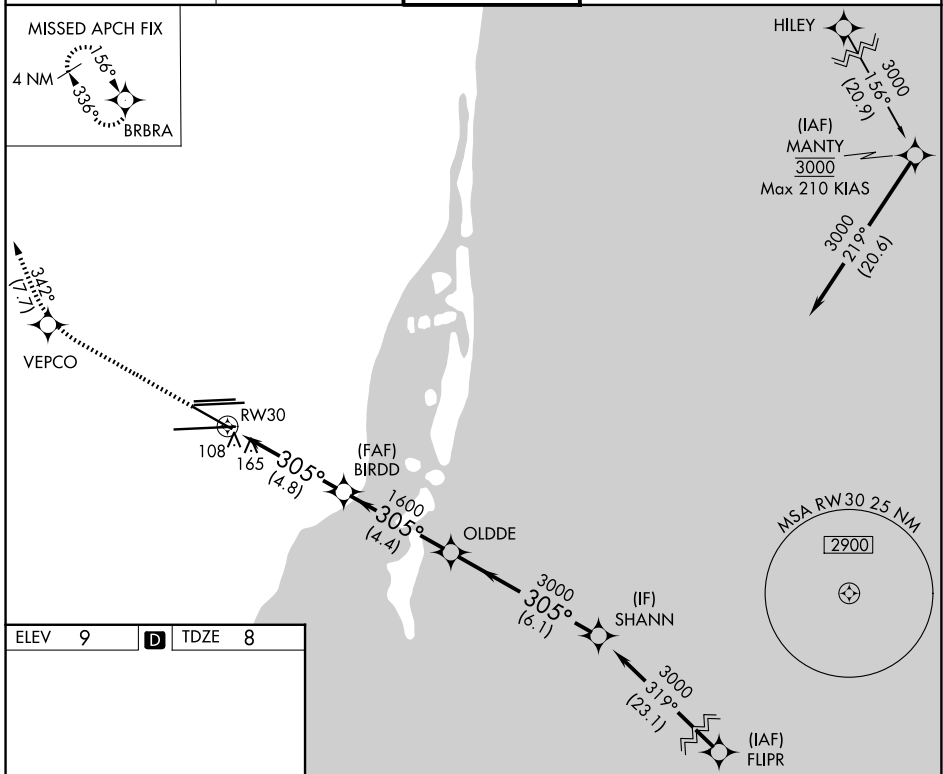
APP CRS	Rwy Ldg	7913
305°	TDZE	8
	Apt Elev	9

RNAV (RNP) Y RWY 30

MIAMI INTL (MIA)

<p>NA</p> <p>For inoperative MALS, increase RNP 0.23 all Cats visibility to 1½, RNP 0.30 all Cats to 1¾. GPS Required.</p> <p>For uncompensated Baro-VNAV systems, procedure NA below 6°C (42°F) or above 48°C (119°F).</p>	<p>MALS</p> <p>(A2)</p>	<p>MISSED APPROACH: Climb to 3000 direct VEPCO and via 342° track to BRBRA and hold.</p>
	<p>GND CON</p> <p>121.8 (8L/8R/12/26L/26R) 348.6</p> <p>127.5 (9/27/30)</p>	

D-ATIS	MIAMI APP CON	MIAMI TOWER	GND CON
119.15	124.85 322.3	118.3 256.9	121.8 (8L/8R/12/26L/26R) 348.6 127.5 (9/27/30)



3000	VEPCO	342° tr	BRBRA	VGSI and RNAV glidepath not coincident (VGSI Angle 3.00/TCH 71).	Procedure Turn NA
	RW30	BIRDD	OLDD	SHANN	
	1600	1600	3000	3000	
	4.8 NM	4.4 NM	6.1 NM		
GP 3.00°					TCH 51
CATEGORY	A	B	C	D	
RNP 0.23 DA		426-1¼	418 (500-1¼)		
RNP 0.30 DA		521-1½	513 (600-1½)		

AUTHORIZATION REQUIRED