

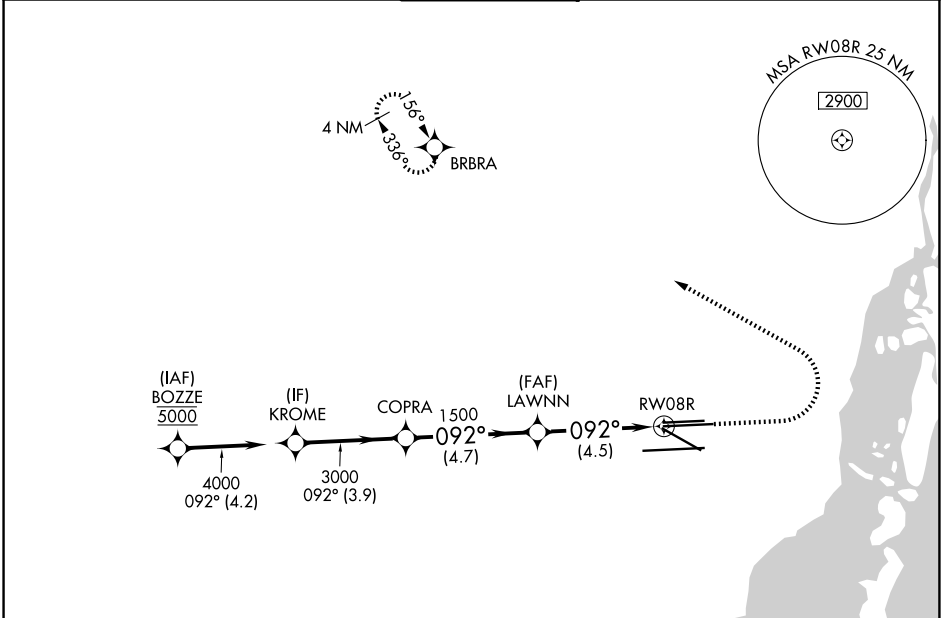
|             |          |              |
|-------------|----------|--------------|
| APP CRS     | Rwy Ldg  | <b>10506</b> |
| <b>092°</b> | TDZE     | <b>9</b>     |
|             | Apt Elev | <b>9</b>     |

# RNAV (RNP) Y RWY 8R

MIAMI INTL (MIA)

|  |       |   |
|--|-------|---|
| RNP AR APCH - GPS.   | MALSR | MISSED APPROACH: Climb to 800 then climbing left turn to 3000 direct BRBRA and hold. *Missed approach requires minimum climb of 330 feet per NM to 600. |
| ▼ For uncompensated Baro-VNAV systems, procedure NA below 9°C or above 54°C. Simultaneous approach authorized. For inop ALS, increase RNP 0.11* all Cats visibility to RVR 6000. |       |   |

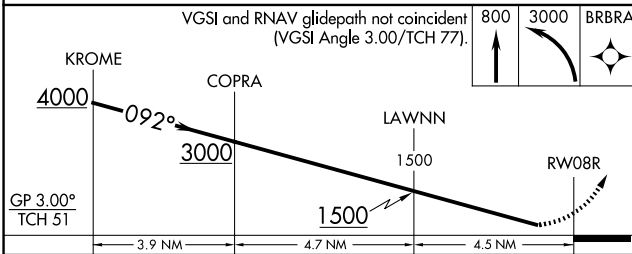
|               |                     |                    |  |
|---------------|---------------------|--------------------|--|
| D-ATIS        | MIAMI APP CON       | MIAMI TOWER        | GND CON  |
| <b>119.15</b> | <b>124.85 322.3</b> | <b>118.3 256.9</b> | <b>121.8</b> (8L/8R/12/26L/26R) <b>348.6</b><br><b>127.5</b> (9/27/30) |



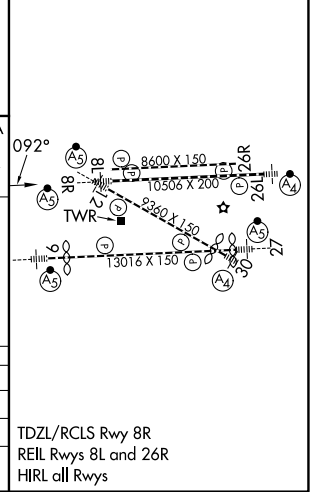
SE-3, 11 JUN 2026 to 09 JUL 2026

SE-3, 11 JUN 2026 to 09 JUL 2026

|      |          |   |      |          |
|------|----------|---|------|----------|
| ELEV | <b>9</b> | D | TDZE | <b>9</b> |
|------|----------|---|------|----------|



|              |        |        |             |   |
|--------------|--------|--------|-------------|---|
| GP 3.00°     |        |        |             |   |
| TCH 51       |        |        |             |   |
|              | 3.9 NM | 4.7 NM | 4.5 NM      |   |
| CATEGORY     | A      | B      | C           | D |
| RNP 0.11 DA* | 397/40 |        | 388 (400-¾) |   |
| RNP 0.30 DA  | 458/45 |        | 449 (500-⅔) |   |



**AUTHORIZATION REQUIRED**

TDZL/RCLS Rwy 8R  
REIL Rwy 8L and 26R  
HIRL all Rwy