

MIAMI, FLORIDA

AL-257 (FAA)

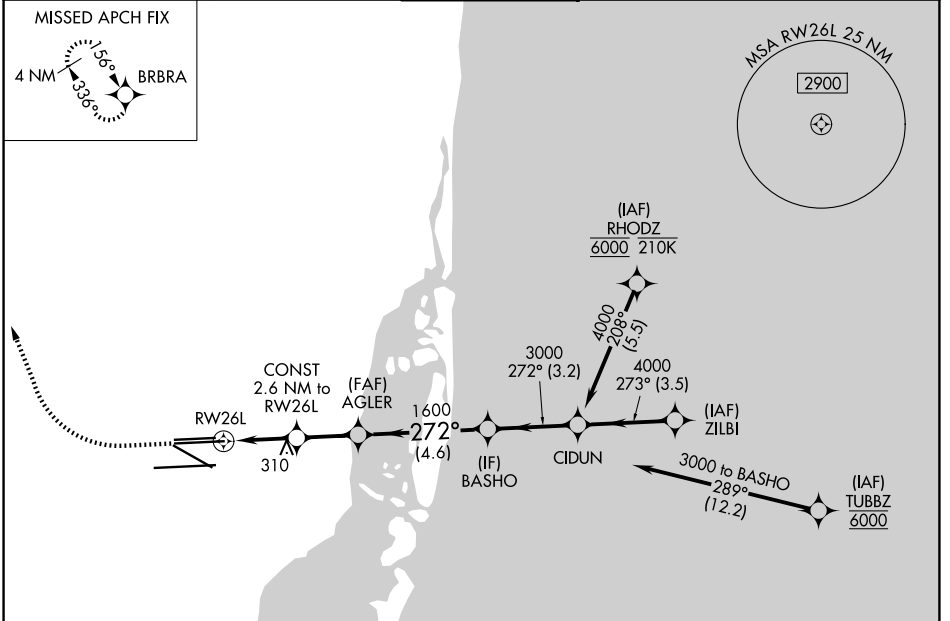
25275

WAAS CH 81905 W26B	APP CRS 272°	Rwy Ldg 10220 TDZE 9 Apt Elev 9
----------------------------------------	------------------------	------------------------------------------------------------

RNAV (GPS) Y RWY 26L

MIAMI INTL (MIA)

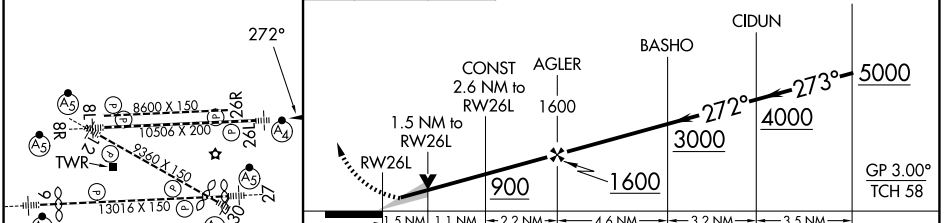
RNP APCH - GPS.		MALSF	MISSED APPROACH: Climb to 800 then climbing right turn to 4000 direct BRBRA and hold, continue climb-in-hold to 4000.
<p>Simultaneous approach authorized. LNAV procedure NA during simultaneous operations. Inop table does not apply to LPV all Cats. For uncompensated Baro-VNAV systems, LNAV/VNAV NA below 9°C or above 54°C.</p>			
D-ATIS 119.15	MIAMI APP CON 124.85 322.3	MIAMI TOWER 118.3 256.9	GND CON 121.8 (8L/8R/12/26L/26R) 348.6 127.5 (9/27/30)



ELEV 9	D	TDZE 9
--------	----------	--------

800 4000 BRBRA

VGSI and RNAV glidepath not coincident (VGSI Angle 3.00/TCH 73).



CATEGORY	A	B	C	D
LPV DA		209/40	200 (200-¾)	
LNAV/VNAV DA		348/40	339 (400-¾)	
LNAV MDA	560/40	551 (600-¾)	560-1⅓	551 (600-1⅓)

MIAMI, FLORIDA
Amdt 4 14JUL22

25°48'N-80°17'W

RNAV (GPS) Y RWY 26L

SE-3, 11 JUN 2026 to 09 JUL 2026

SE-3, 11 JUN 2026 to 09 JUL 2026