

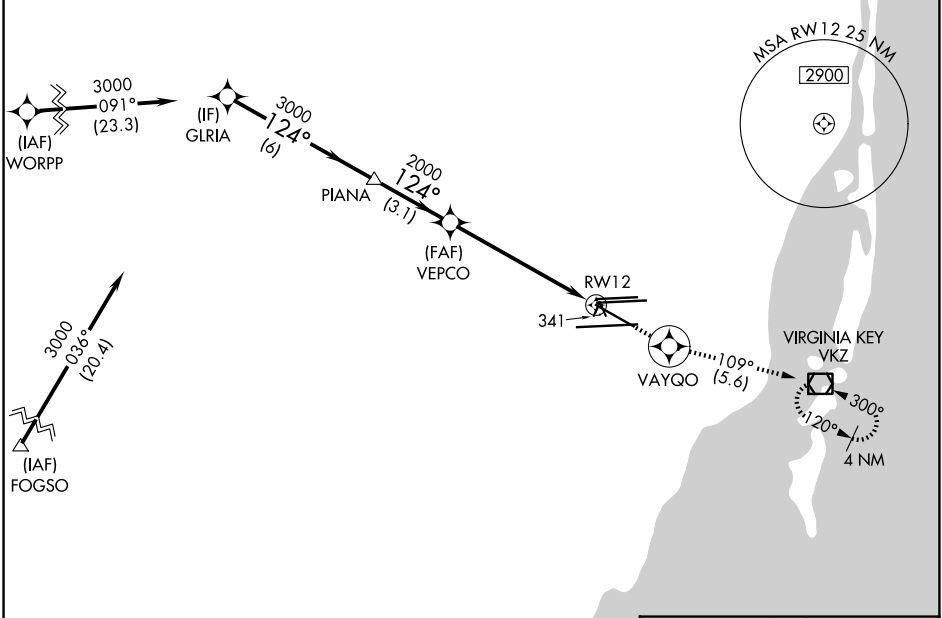
WAAS CH 61204 W12A	APP CRS 124°	Rwy Ldg TDZE Apt Elev	8579 9 9
--	------------------------	-----------------------------	-------------------------------------

RNAV (GPS) Z RWY 12

MIAMI INTL (MIA)

RNP APCH - GPS.	MALSRL	MISSED APPROACH: Climb to 3000 direct VAYQO and on 109° track to VKZ VOR/DME and hold, continue climb-in-hold to 3000.
▼ Rwy 12 helicopter visibility reduction below ¾ SM NA. For uncompensated Baro-VNAV systems, LNAV/VNAV NA below 9°C or above 54°C. For inop ALS, increase LPV all Cats visibility to RVR 6000, LNAV/VNAV all Cats to 1¾ and LNAV Cat A/B to 5500.		

D-ATIS 119.15	MIAMI APP CON 124.85 322.3	MIAMI TOWER 118.3 256.9	GND CON 121.8 (8L/8R/12/26L/26R) 127.5 (9/27/30)	348.6
-------------------------	--------------------------------------	-----------------------------------	--	--------------



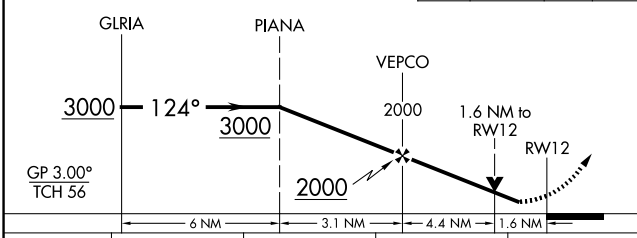
SE-3, 11 JUN 2026 to 09 JUL 2026

SE-3, 11 JUN 2026 to 09 JUL 2026

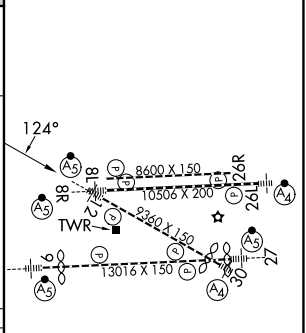
ELEV 9	D TDZE 9
--------	-----------------

VGSI and RNAV glidepath not coincident (VGSI Angle 3.00/TCH 72).

3000	VAYQO	tr	VKZ
		109°	



CATEGORY	A		B		C		D	
LPV DA	391/40		382 (400-¾)					
LNAV/VNAV DA	512/55		503 (600-1)					
LNAV MDA	600/40 591 (600-¾)		600-1¼ 591 (600-1¼)					



TDZL/RCLS Rwy 8R
REIL Rws 8L and 26R
HIRL all Rws