

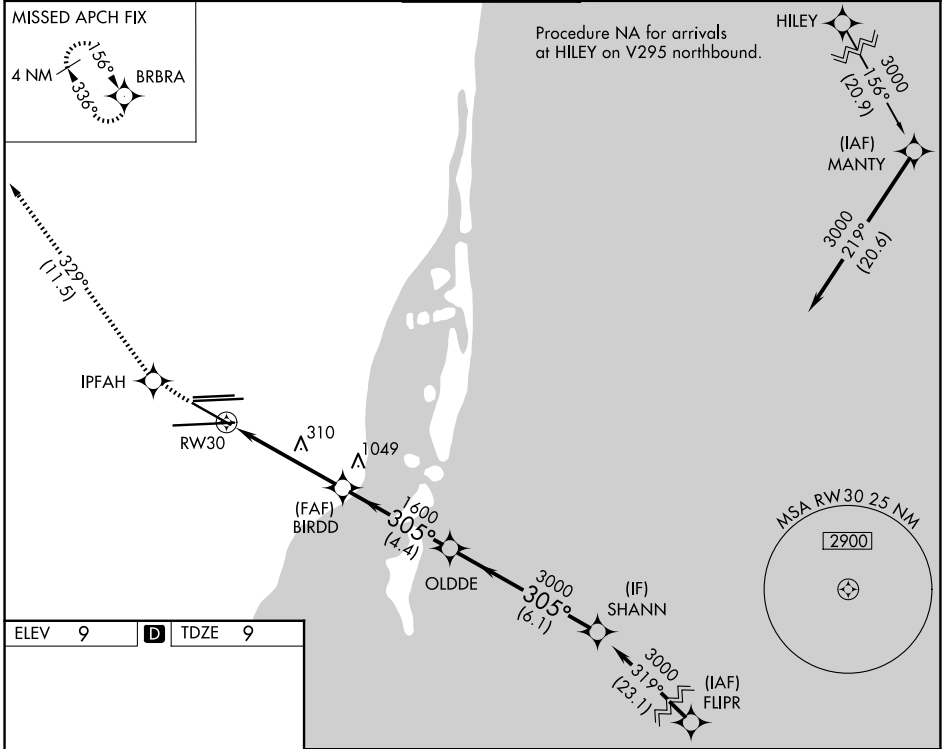
WAAS CH <b>40105</b> <b>W30A</b>	APP CRS <b>305°</b>	Rwy Ldg TDZE Apt Elev	<b>7913</b> <b>9</b> <b>9</b>
--	------------------------	-----------------------------	-------------------------------------

# RNAV (GPS) Z RWY 30

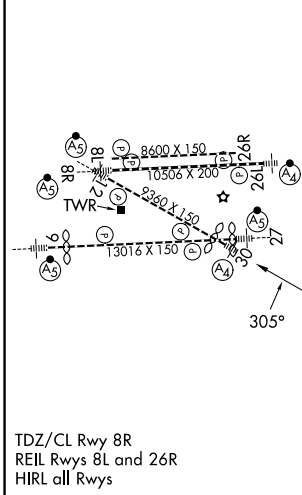
MIAMI INTL (MIA)

RNP APCH - GPS.	MALS	MISSED APPROACH: Climb to 3000 direct IPFAH and on 329° track to BRBRA and hold.
▼ Inop table does not apply to LNAV Cat C and D. For inop ALS, increase LPV all Cats visibility to RVR 4500.	(A <sub>2</sub> )	

D-ATIS <b>119.15</b>	MIAMI APP CON <b>124.85 322.3</b>	MIAMI TOWER <b>118.3 256.9</b>	GND CON <b>121.8</b> (8L/8R/12/26L/26R) <b>127.5</b> (9/27/30) <b>348.6</b>
-------------------------	--------------------------------------	-----------------------------------	---

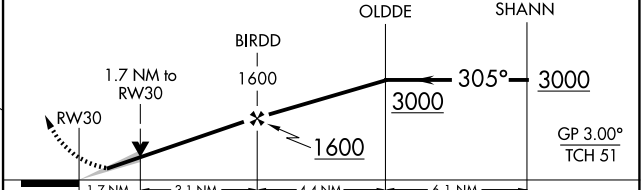


ELEV 9	<b>D</b>	TDZE 9
--------	----------	--------



TDZ/CL Rwy 8R  
REIL Rwy 8L and 26R  
HIRL all Rwy

3000	IPFAH	tr 329°	BRBRA	VGSI and RNAV glidepath not coincident (VGSI Angle 3.00/TCH 71).
------	-------	---------	-------	--



CATEGORY	A	B	C	D
LPV DA		286/40	277 (300-¾)	
LNAV MDA	620/40	611 (700-¾)	620-1½	611 (700-1½)

SE-3, 11 JUN 2026 to 09 JUL 2026

SE-3, 11 JUN 2026 to 09 JUL 2026